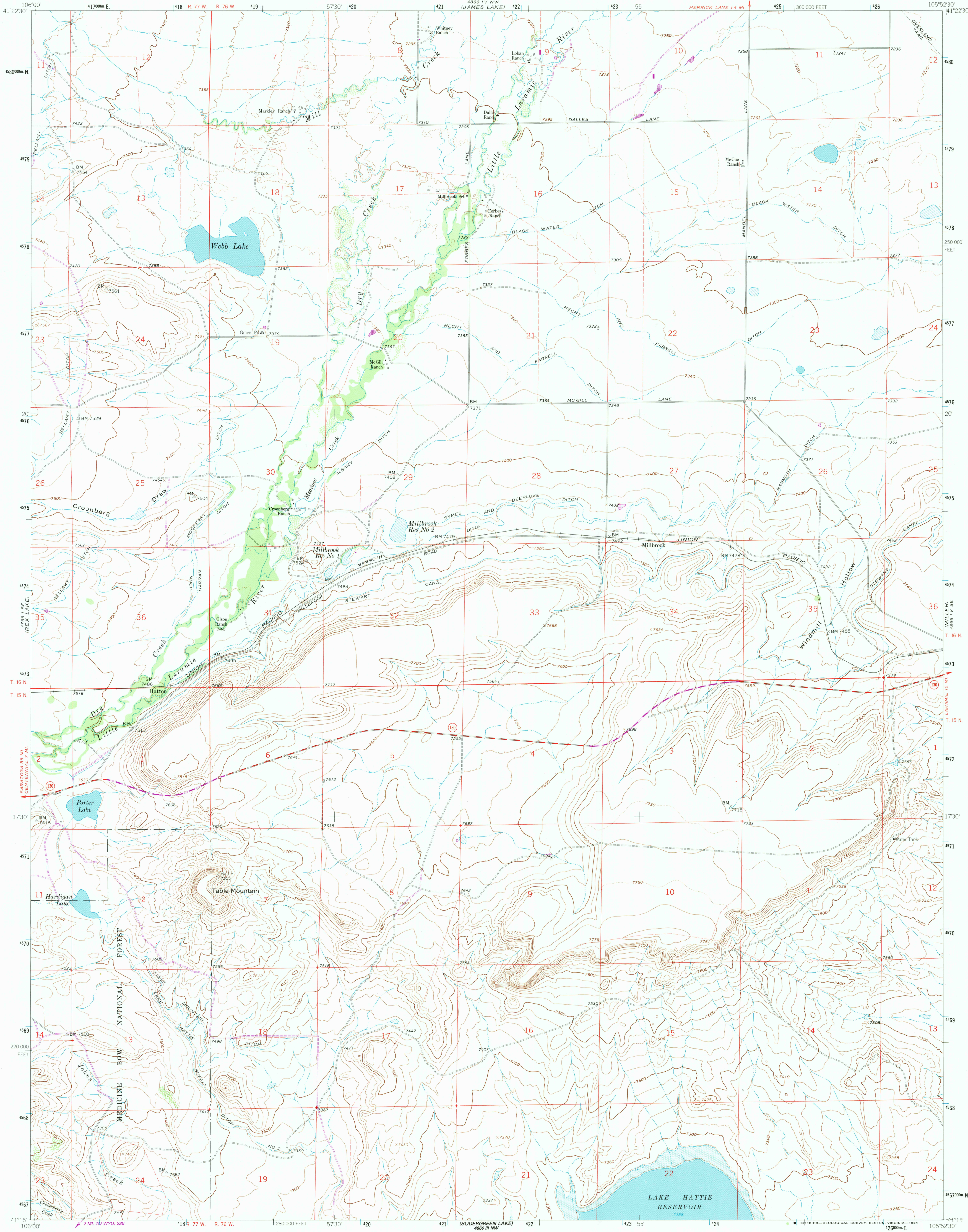


UNITED STATES  
DEPARTMENT OF THE INTERIOR  
GEOLOGICAL SURVEY

MILLBROOK QUADRANGLE  
WYOMING-ALBANY CO.  
7.5 MINUTE SERIES (TOPOGRAPHIC)



Mapped, edited, and published by the Geological Survey as part of the Department of the Interior program for the development of the Missouri River Basin Control by USGS, NCS/NOAA and Wyoming Geodetic Survey

Topography by photogrammetric methods from aerial photographs taken 1961. Field checked 1962

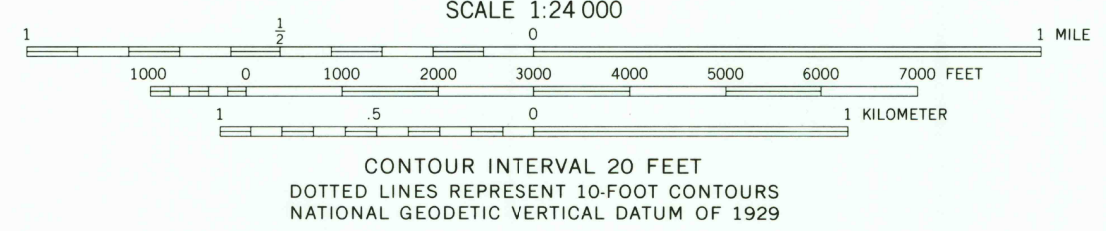
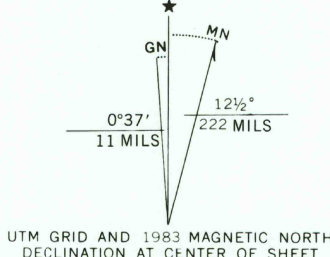
Polyconic projection. 1927 North American Datum 10,000-foot grid based on Wyoming coordinate system, east zone 1000-meter Universal Transverse Mercator grid ticks, zone 13, shown in blue

Fine red dashed lines indicate selected fence and field lines

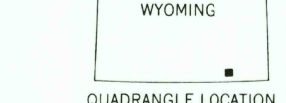
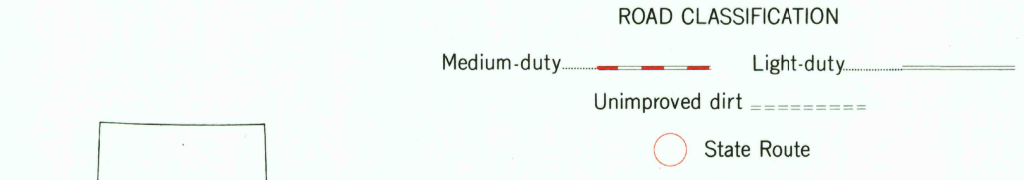
Area covered by dashed light blue pattern is subject to controlled inundation

There may be private inholdings within the boundaries of the National or State reservations shown on this map

To place on the predicted North American Datum 1983 move the projection lines 7 meters north and 49 meters east as shown by dashed corner ticks



THIS MAP COMPLIES WITH NATIONAL MAP ACCURACY STANDARDS  
FOR SALE BY U. S. GEOLOGICAL SURVEY, DENVER, COLORADO 80225, OR RESTON, VIRGINIA 22092  
A FOLDER DESCRIBING TOPOGRAPHIC MAPS AND SYMBOLS IS AVAILABLE ON REQUEST



MILLBROOK, WYO.  
41105-C8-TF-024  
1962  
PHOTOREVISED 1983  
DMA 4866 IV SW-SERIES V874

Revisions shown in purple and woodland compiled from aerial photographs taken 1981 and other source data  
Partial field check by U.S. Forest Service. Map edited 1983

RETURN TO:  
USGS AND HISTORICAL MAP ARCHIVES