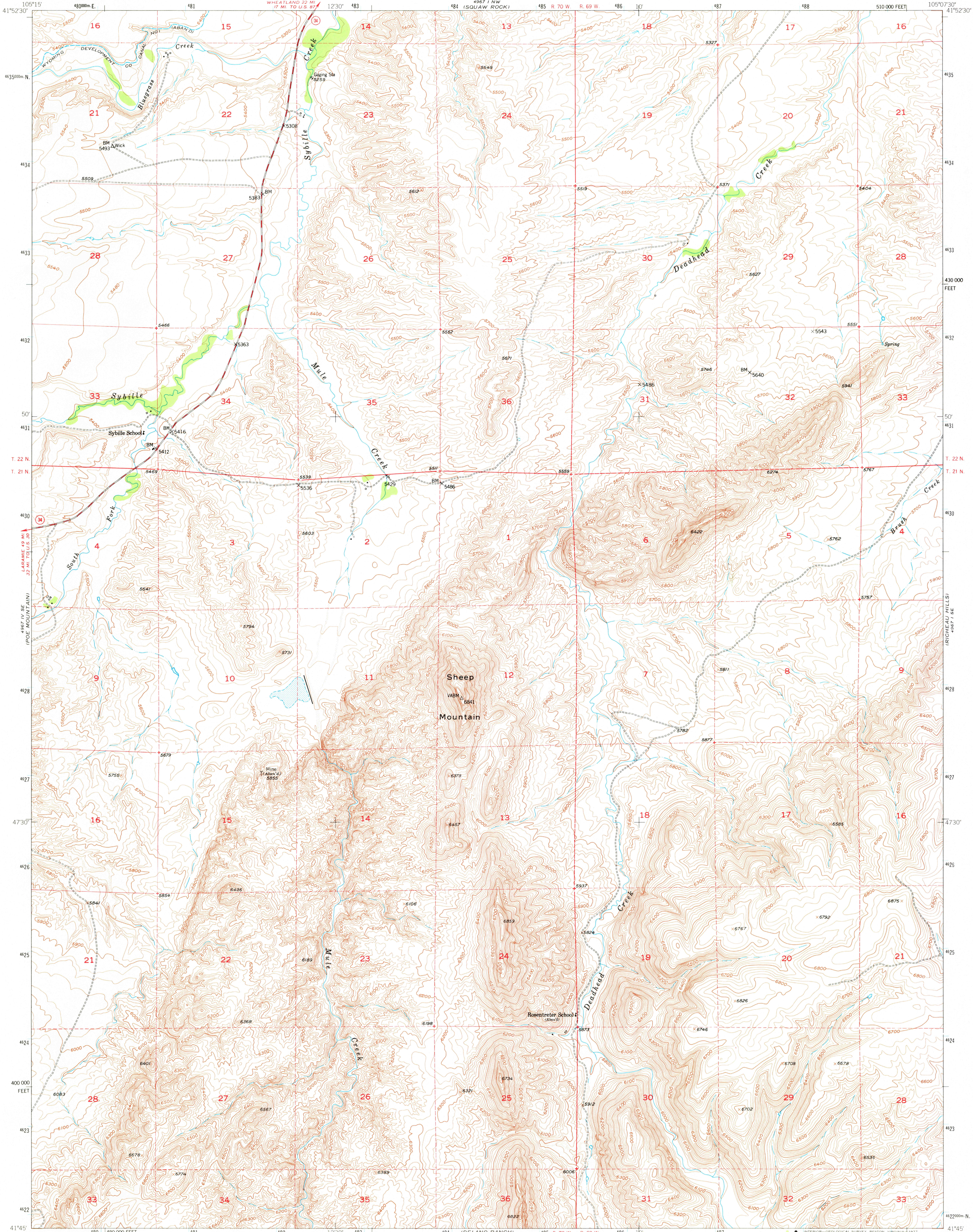
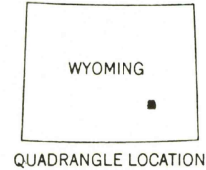
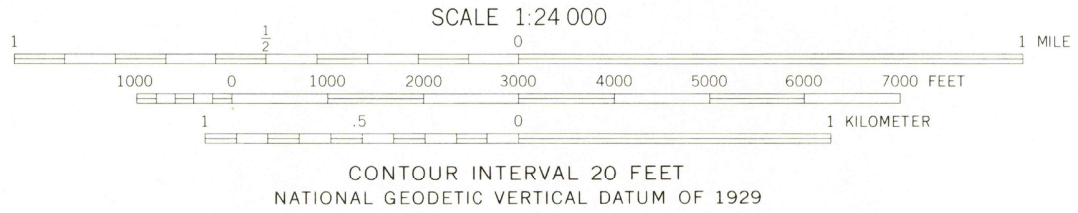
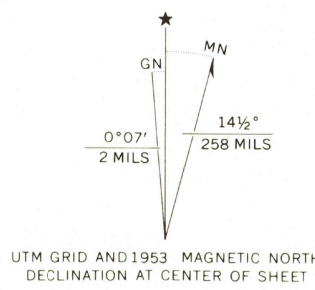


UNITED STATES
DEPARTMENT OF THE INTERIOR
GEOLOGICAL SURVEY

NATWICK SW QUADRANGLE
WYOMING-PLATTE CO.
7.5 MINUTE SERIES (TOPOGRAPHIC)



Mapped, edited, and published by the Geological Survey as part of the Department of the Interior program for the development of the Missouri River Basin
Control by USGS and USC&GS
Topography from aerial photographs by multiplex methods
Aerial photographs taken 1949. Field check 1953
Polyconic projection. 1927 North American datum
10,000-foot grid based on Wyoming coordinate system, south zone
1000-meter Universal Transverse Mercator grid ticks, zone 13, shown in blue
Dashed land lines indicate approximate locations



ROAD CLASSIFICATION
Heavy-duty 4 LANE 6 LANE Light-duty
Medium-duty 4 LANE 6 LANE Unimproved dirt
U. S. Route State Route

NATWICK SW, WYO.
N4145-W10507.5/7.5

1953
USGS
Historical File
Topographic Division

AMS 4967 I SW - SERIES V874

RETURN TO:
USGS AND HISTORICAL MAP ARCHIVES

JUN 08 1977