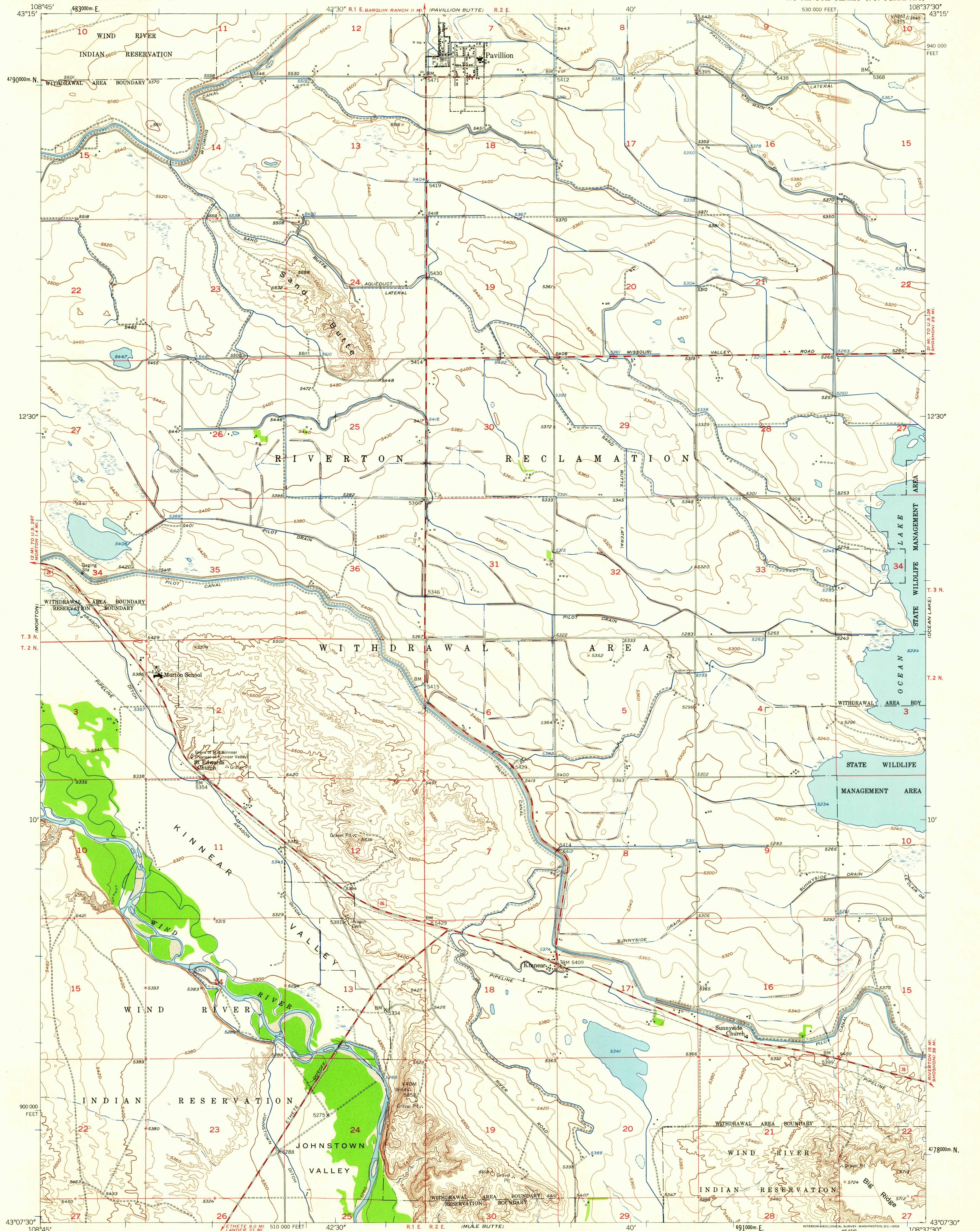


UNITED STATES
DEPARTMENT OF THE INTERIOR
GEOLOGICAL SURVEY

PAVILLION QUADRANGLE
WYOMING-FREMONT CO.
7.5 MINUTE SERIES (TOPOGRAPHIC)



Map by the Geological Survey and Bureau of Reclamation
Edited and published by the Geological Survey as part of the
Department of the Interior program for the development of the
Missouri River Basin
Control by USGS and USO&GS
Topography from aerial photographs by multiplex methods 1949
and by planetable surveys 1921
Aerial photographs taken 1948. Field check 1950. Revised 1958
Polyconic projection. 1927 North American datum
10,000-foot grid based on Wyoming coordinate system,
west central zone
1000-meter Universal Transverse Mercator grid ticks,
zone 12, shown in blue

TRUE NORTH
MAGNETIC NORTH
APPROXIMATE MEAN
DECLINATION, 1958

SCALE 1:24,000
1 0 1000 2000 3000 4000 5000 6000 7000 FEET
1 5 0 5 10 KILOMETER
CONTOUR INTERVAL 20 FEET
DATUM IS MEAN SEA LEVEL
THIS MAP COMPLIES WITH NATIONAL MAP ACCURACY STANDARDS
FOR SALE BY U.S. GEOLOGICAL SURVEY, DENVER 2, COLORADO OR WASHINGTON 25, D.C.
A FOLDER DESCRIBING TOPOGRAPHIC MAPS AND SYMBOLS IS AVAILABLE ON REQUEST

ROAD CLASSIFICATION
Medium-duty
Light-duty
Unimproved dirt
U.S. Route
WYOMING
QUADRANGLE LOCATION
U.S.G.S.
FILE COPY
TOPOGRAPHIC DIVISION
PAVILLION, WYO.
N4307.5-W10837.5/7.5
1958

RETURN TO:
USGS AND HISTORICAL MAP ARCHIVES
MAY 26 1959