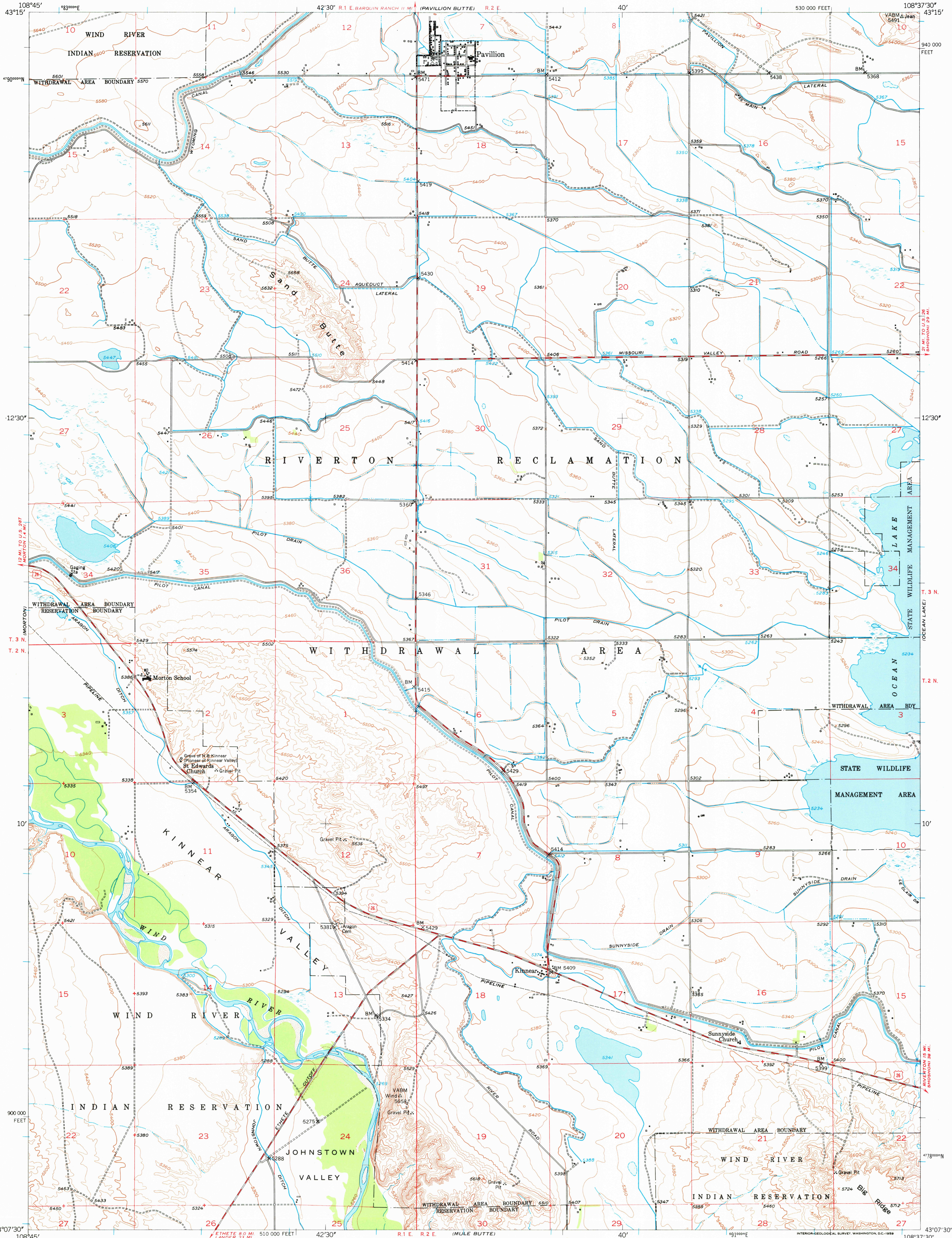


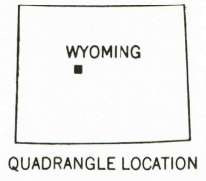
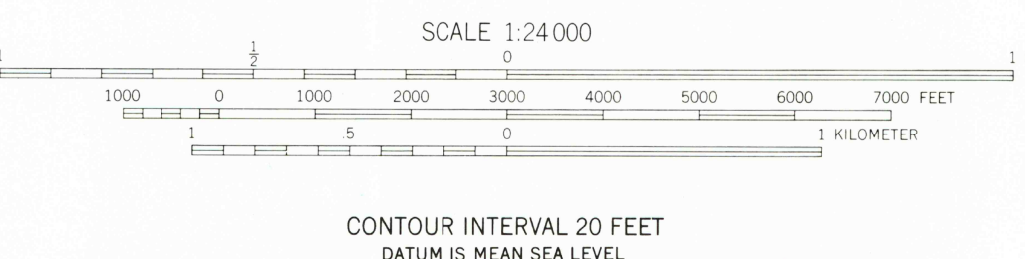
UNITED STATES
DEPARTMENT OF THE INTERIOR
GEOLOGICAL SURVEY

PAVILLION QUADRANGLE
WYOMING-FREMONT CO.
7.5 MINUTE SERIES (TOPOGRAPHIC)



Maped by the Geological Survey and Bureau of Reclamation
Edited and published by the Geological Survey as part of the
Department of the Interior program for the development of the
Missouri River Basin
Control by USGS and USC&GS
Topography from aerial photographs by multiplex methods 1949
and by plane-table surveys 1921
Aerial photographs taken 1948. Field check 1950. Revised 1958
Polyconic projection. 1927 North American datum
10,000-foot grid based on Wyoming coordinate system,
west central zone
1000-meter Universal Transverse Mercator grid ticks,
zone 12, shown in blue

TRUE NORTH
MAGNETIC NORTH
APPROXIMATE MEAN
DECLINATION, 1958



ROAD CLASSIFICATION
Medium-duty ——— Light-duty ———
Unimproved dirt ———
U.S. Route ———
USGS
Historical File
Topographic Division
PAVILLION, WYO.
N4307.5-W10837.5/7.5
1958

THIS MAP COMPLIES WITH NATIONAL MAP ACCURACY STANDARDS
FOR SALE BY U.S. GEOLOGICAL SURVEY, DENVER 2, COLORADO OR WASHINGTON 25, D.C.
A FOLDER DESCRIBING TOPOGRAPHIC MAPS AND SYMBOLS IS AVAILABLE ON REQUEST

RETURN TO:
USGS AND HISTORICAL MAP ARCHIVES

FEB 28 1977
1800