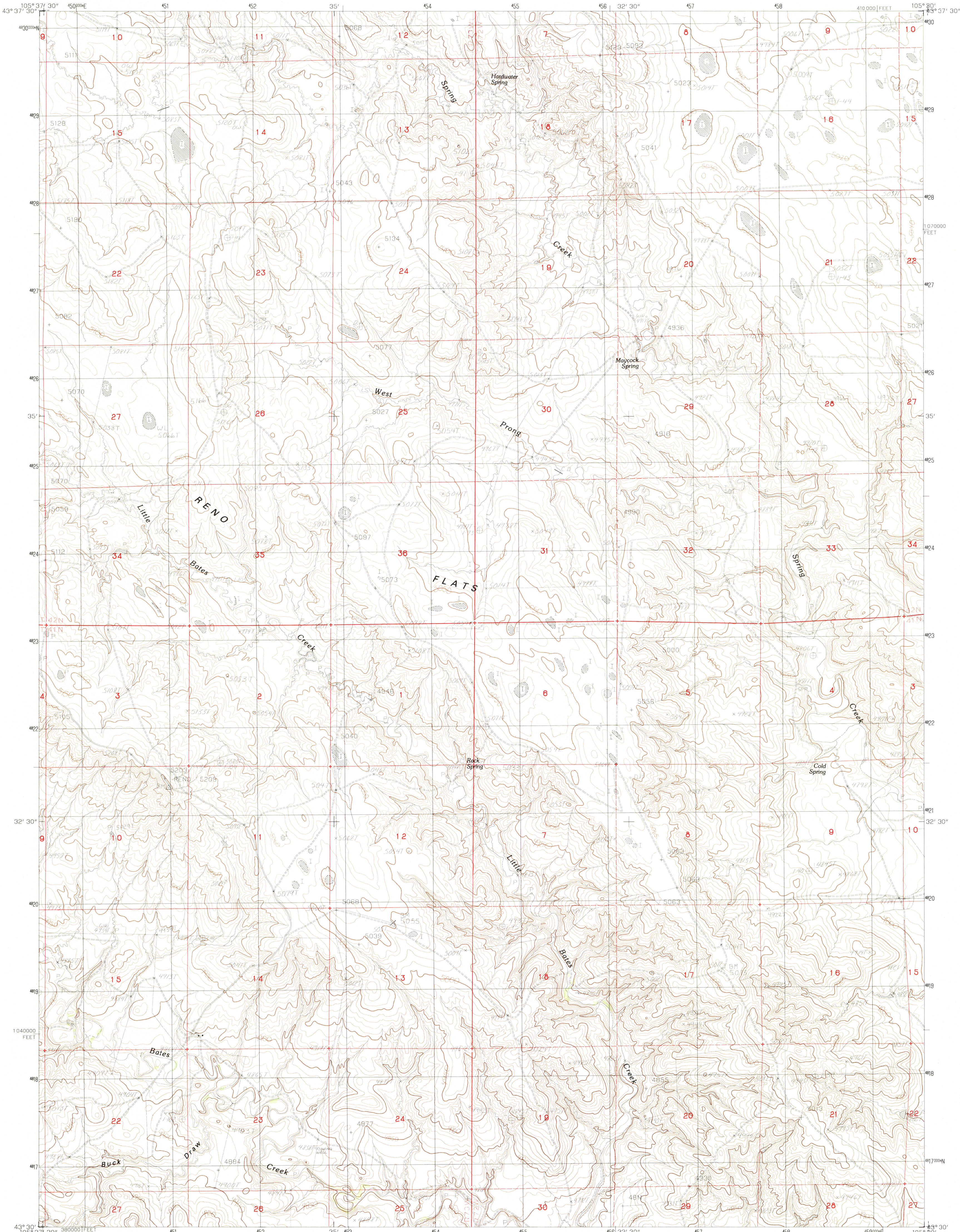


UNITED STATES  
DEPARTMENT OF THE INTERIOR  
GEOLOGICAL SURVEY

RENO FLATS QUADRANGLE  
WYOMING-CAMPBELL CO.  
7.5 MINUTE SERIES (TOPOGRAPHIC)



PRODUCED BY THE UNITED STATES GEOLOGICAL SURVEY  
CONTROL BY: USGS, NGS/NOAA  
COMPILED FROM AERIAL PHOTOGRAPHS TAKEN: 1976  
FIELD CHECKED: 1978 MAP EDITED: 1984  
PROJECTION: TRANSVERSE MERCATOR  
GRID: 100-METER UNIVERSAL TRANSVERSE MERCATOR ZONE 13  
UTM: 1000-FOOT STATE GRID TICS  
UTM: GRID DECLINATION: 0°23' WEST  
1984 MAGNETIC NORTH DECLINATION: 13° EAST  
VERTICAL DATUM: NATIONAL GEODETIC VERTICAL DATUM OF 1929  
HORIZONTAL DATUM: 1927 NORTH AMERICAN DATUM  
To place on the predicted North American Datum of 1983,  
move the projection lines as shown by dashed corner ticks  
(2 meters north and 42 meters east)  
There may be private inholdings within the boundaries of any  
Federal and State Reservations shown on this map  
All marginal data and lettering generated and positioned by  
automated type placement procedures

PROVISIONAL MAP  
Produced from original  
manuscript drawings. Infor-  
mation shown as of date of  
field check. 3

THIS MAP COMPLIES WITH NATIONAL MAP ACCURACY STANDARDS  
FOR SALE BY U.S. GEOLOGICAL SURVEY, DENVER, COLORADO 80225  
OR RESTON, VIRGINIA 22092

QUADRANGLE LOCATION			ADJOINING 7.5' QUADRANGLE NAMES		
1	2	3	1	2	3
4	5	6	4	5	6
7	8	9	7	8	9

ROAD LEGEND  
Improved Road  
Unimproved Road  
Trail  
Interstate Route  
U.S. Route  
State Route  
RENO FLATS, WYOMING  
PROVISIONAL EDITION 1984  
43105-ES-TT-024

RETURN TO:  
USGS AND HISTORICAL MAP ARCHIVES