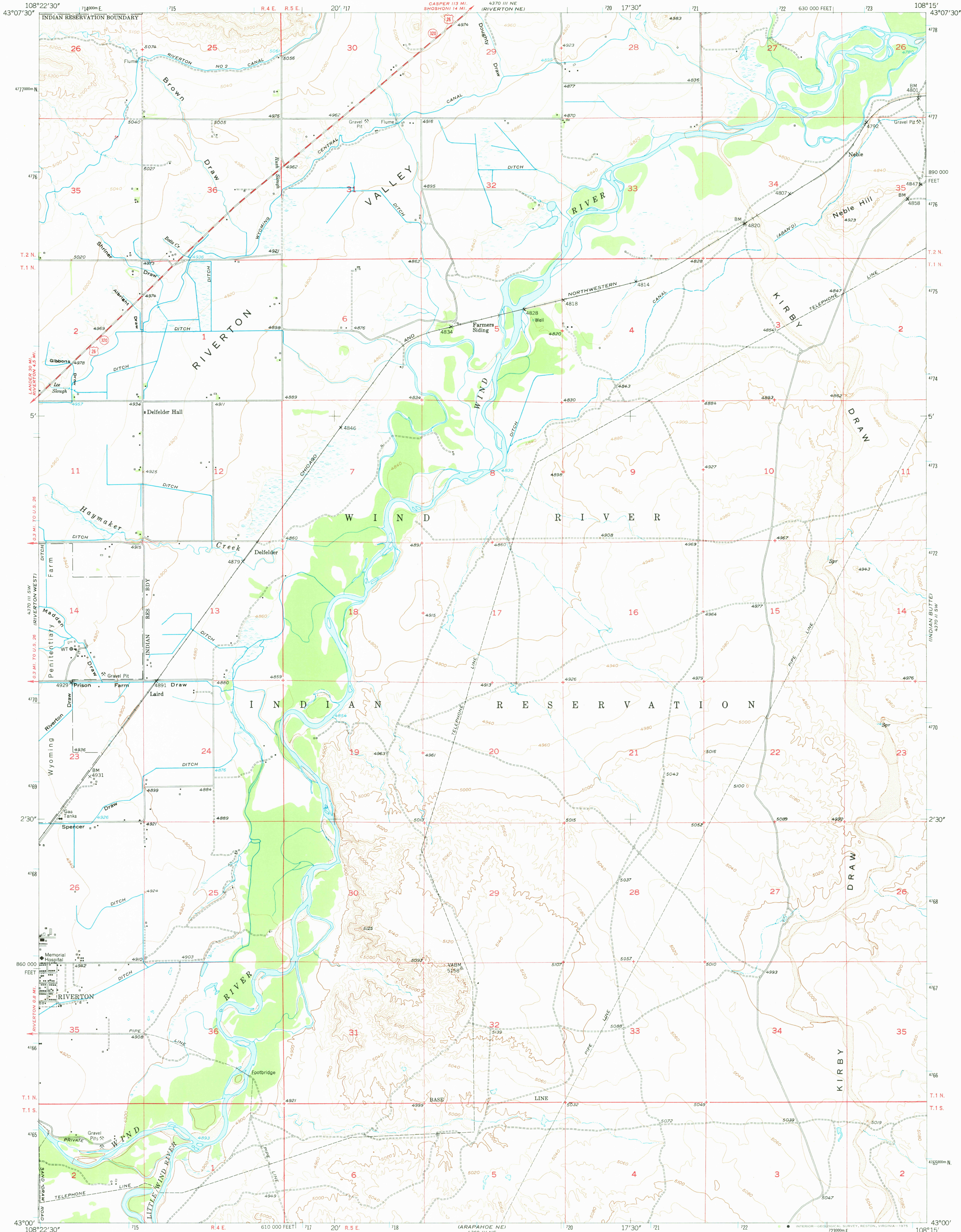


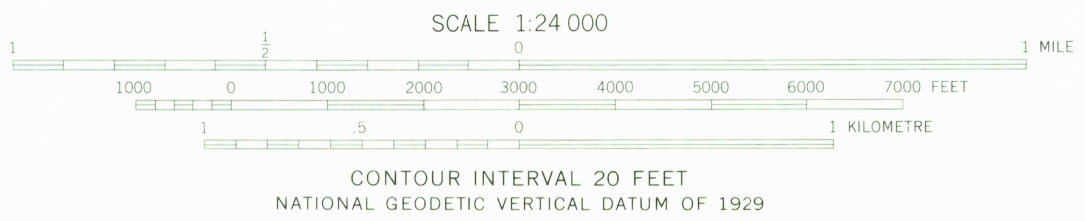
UNITED STATES
DEPARTMENT OF THE INTERIOR
GEOLOGICAL SURVEY

RIVERTON EAST QUADRANGLE
WYOMING-FREMONT CO.
7.5 MINUTE SERIES (TOPOGRAPHIC)



Maped, edited, and published by the Geological Survey as part of the Department of the Interior program for the development of the Missouri River Basin.
Control by USGS and USC&GS
Topography from aerial photographs by multiplex methods, and plane-table surveys 1950
Aerial photographs taken 1948. Field check 1950
Polyconic projection. 1927 North American datum
10,000-foot grid based on Wyoming coordinate system, west central zone
1000-metre Universal Transverse Mercator grid ticks, zone 12, shown in blue

UTM GRID AND 1950 MAGNETIC NORTH DECLINATION AT CENTER OF SHEET



THIS MAP COMPLIES WITH NATIONAL MAP ACCURACY STANDARDS
FOR SALE BY U. S. GEOLOGICAL SURVEY, DENVER, COLORADO 80225, OR RESTON, VIRGINIA 22092
A FOLDER DESCRIBING TOPOGRAPHIC MAPS AND SYMBOLS IS AVAILABLE ON REQUEST

USGS
HISTORICAL FILE
TOPOGRAPHIC DIVISION

RIVERTON EAST, WYO.
N4300-W10815/7.5

1950

AMS 4370 III SE—SERIES V874

JUL 1 1975

RETURN TO:
USGS NHD HISTORICAL MAP ARCHIVES

1670