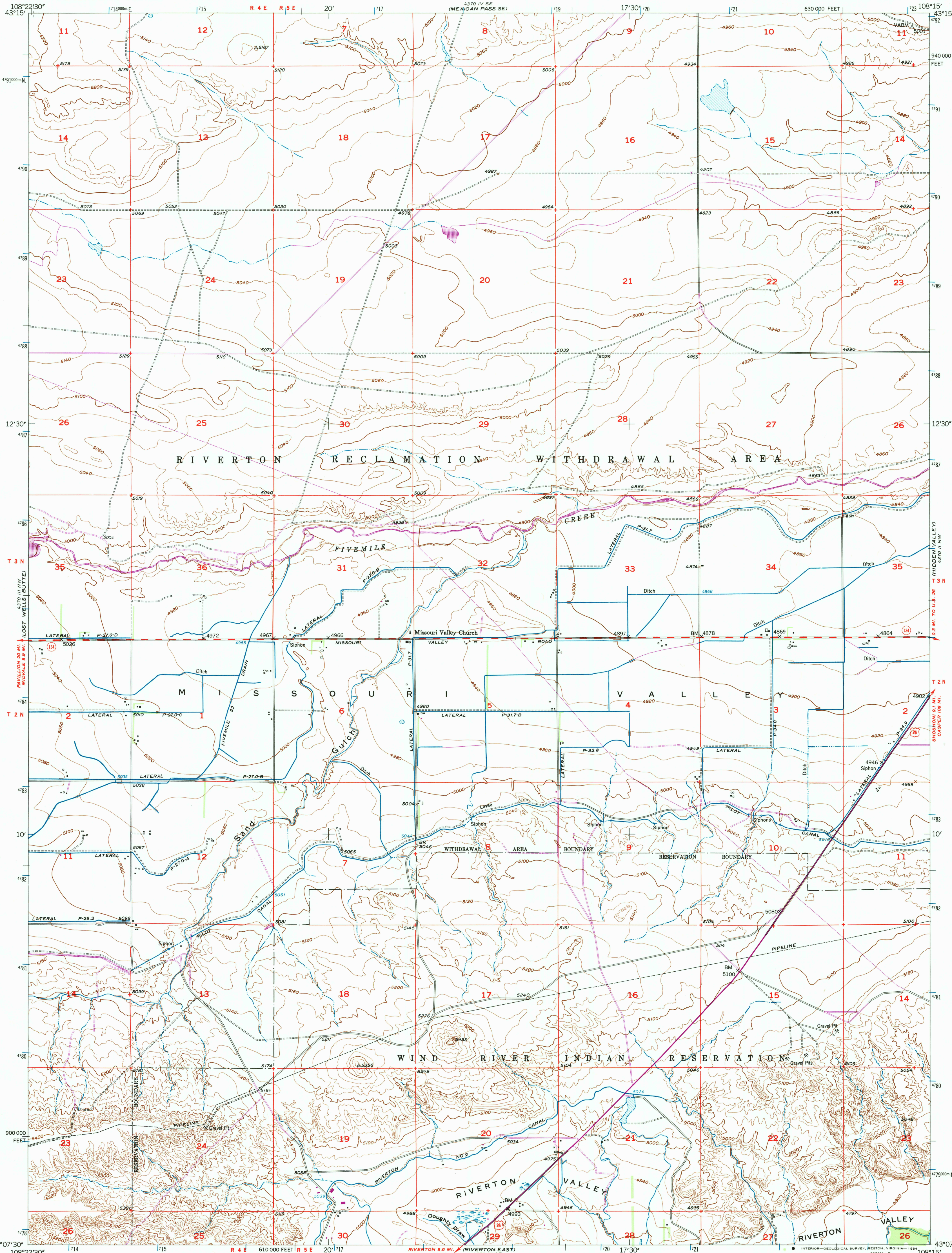


UNITED STATES
DEPARTMENT OF THE INTERIOR
GEOLOGICAL SURVEY

RIVERTON NE QUADRANGLE
WYOMING-FREMONT CO.
7.5 MINUTE SERIES (TOPOGRAPHIC)



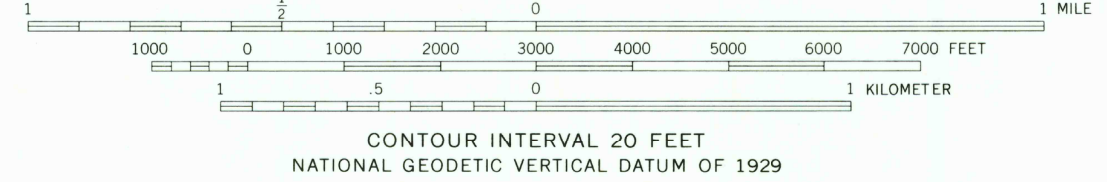
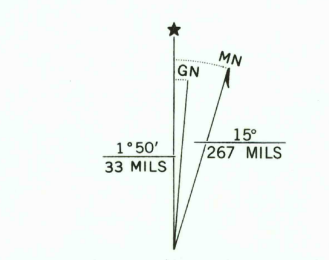
Mapped, edited, and published by the Geological Survey as part of the Department of the Interior program for the development of the Missouri River Basin.

Control by USGS and NOS/NOAA

Topography from aerial photographs by multiplex methods
Aerial photographs taken October 1948. Field check, 1950
Revised 1957

Polyconic projection. 1927 North American Datum
10,000-foot grid based on Wyoming coordinate system,
west central zone
1000-meter Universal Transverse Mercator grid ticks,
zone 12, shown in blue

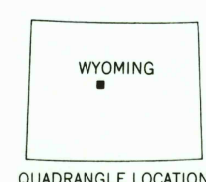
Revisions shown in purple compiled from aerial photographs taken
1975. Map edited 1978. This information not field checked



THIS MAP COMPLIES WITH NATIONAL MAP ACCURACY STANDARDS
FOR SALE BY U.S. GEOLOGICAL SURVEY, DENVER, COLORADO 80225, OR RESTON, VIRGINIA 22092
A FOLDER DESCRIBING TOPOGRAPHIC MAPS AND SYMBOLS IS AVAILABLE ON REQUEST

To place on the predicted North American Datum 1983
move the projection lines 9 meters north and
55 meters east as shown by dashed corner ticks

ROAD CLASSIFICATION	
Primary highway, hard surface	Light-duty road, hard or improved surface
Secondary highway, hard surface	Unimproved road
Interstate Route	U.S. Route
	State Route



RIVERTON NE, WYO.
43108-B3-TF-024

1957
PHOTOREVISED 1978
DMA 4370 III NE-SERIES V874

RETURN TO:
USGS AND HISTORICAL MAP ARCHIVES