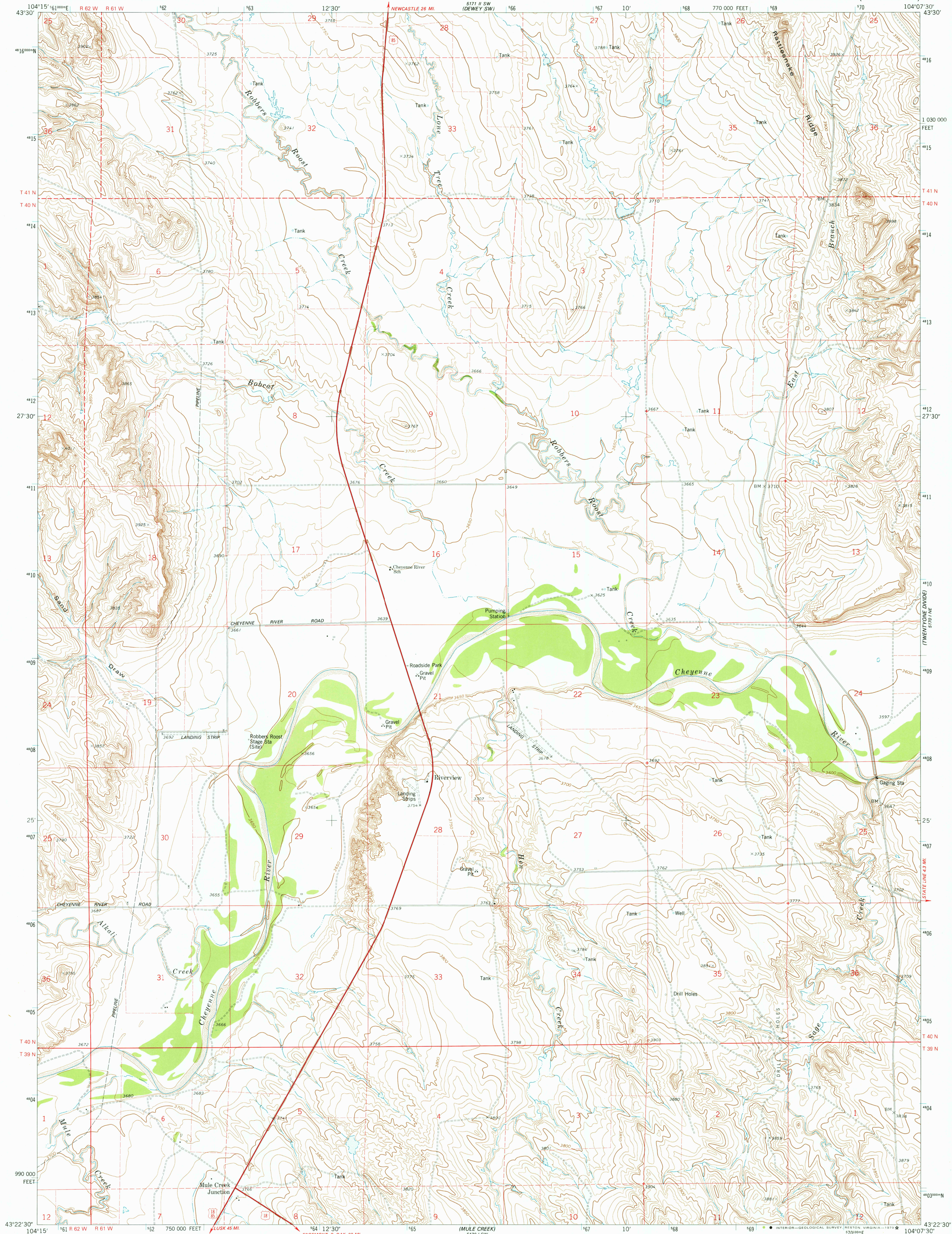


UNITED STATES
DEPARTMENT OF THE INTERIOR
GEOLOGICAL SURVEY

RIVERVIEW QUADRANGLE
WYOMING—NIobrara CO.
7.5 MINUTE SERIES (TOPOGRAPHIC)



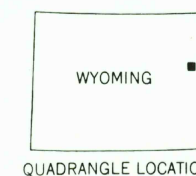
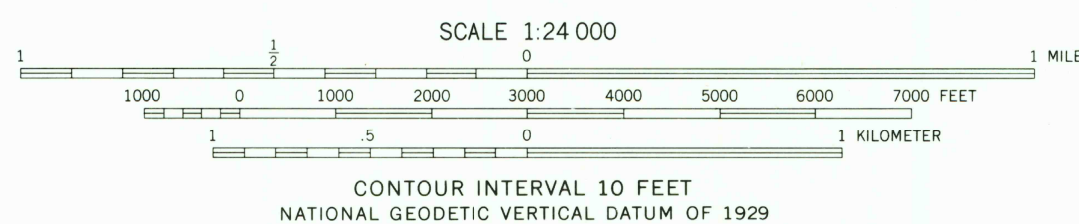
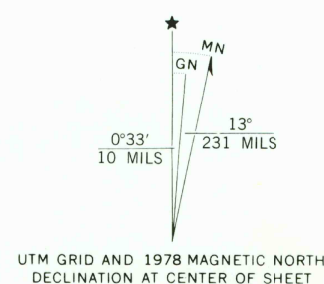
Mapped, edited, and published by the Geological Survey

Control by USGS and NOS/NOAA

Topography by photogrammetric methods from aerial photographs taken 1973. Field checked 1974. Map edited 1978

Projection and 10,000-foot grid ticks: Wyoming coordinate system, east zone (transverse Mercator) 1000-meter Universal Transverse Mercator grid ticks, zone 13, shown in blue. 1927 North American datum

Fine red dashed lines indicate selected fence lines



ROAD CLASSIFICATION	
Primary highway, hard surface	Light-duty road, hard or improved surface
Secondary highway, hard surface	Unimproved road
Interstate Route	U. S. Route
	State Route

USGS
Historical File
Topographic Division

RIVERVIEW, WYO.
N4322.5-W10407.5/7.5

1978

AMS 5170 1 NW—SERIES V874

THIS MAP COMPLIES WITH NATIONAL MAP ACCURACY STANDARDS.
FOR SALE BY U. S. GEOLOGICAL SURVEY, DENVER, COLORADO 80225, OR RESTON, VIRGINIA 22092
A FOLDER DESCRIBING TOPOGRAPHIC MAPS AND SYMBOLS IS AVAILABLE ON REQUEST

RETURN TO:
USGS AND HISTORICAL MAP ARCHIVES