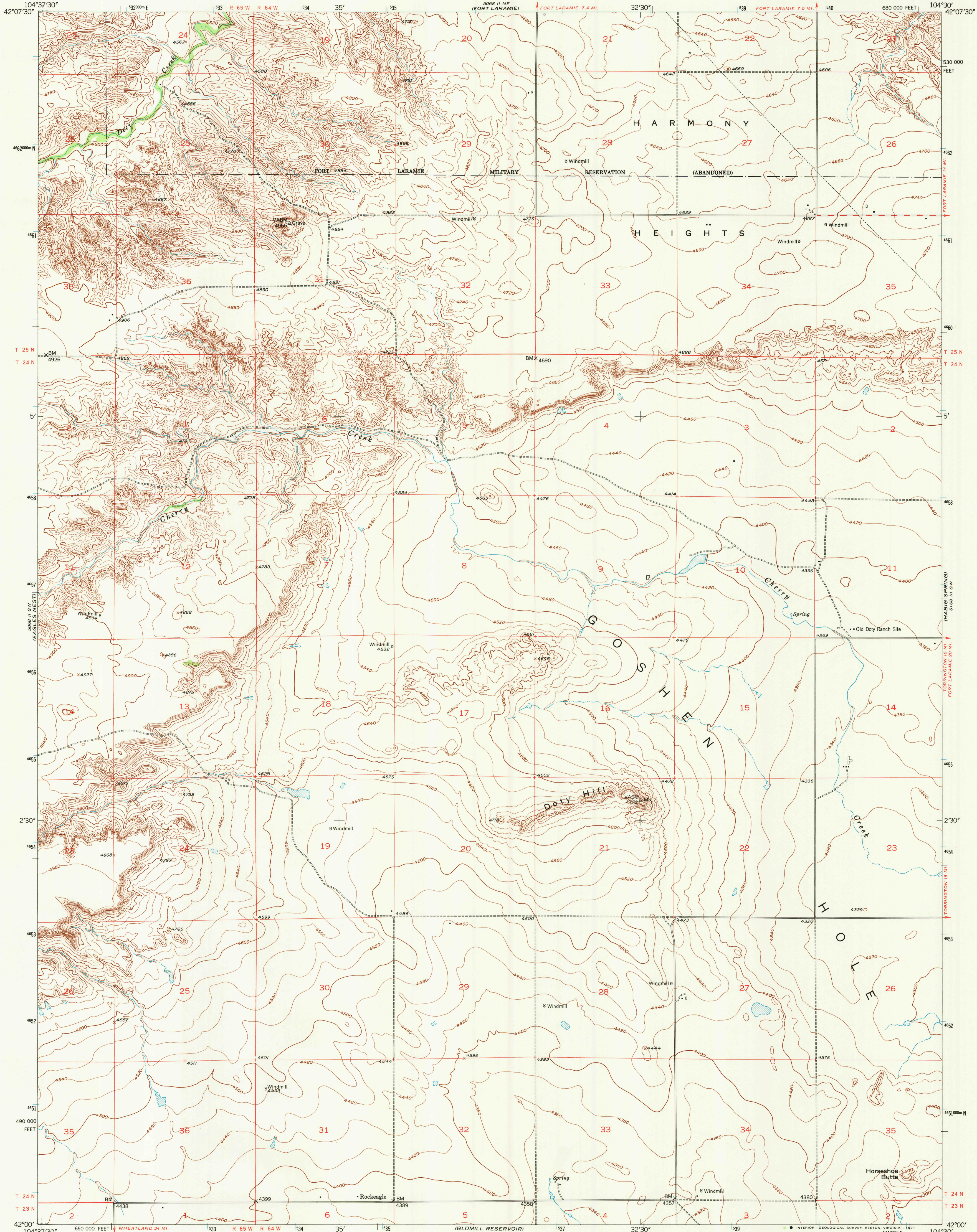
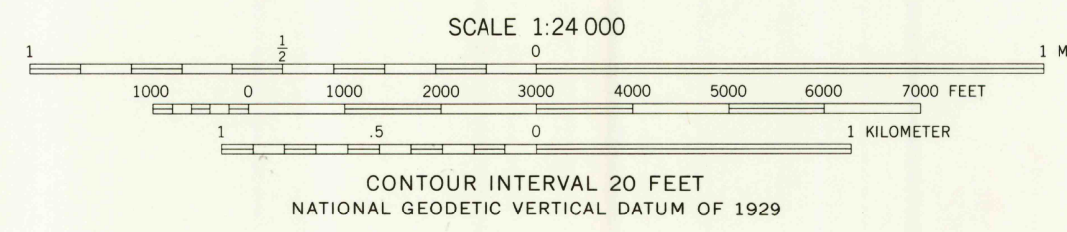


UNITED STATES  
DEPARTMENT OF THE INTERIOR  
GEOLOGICAL SURVEY

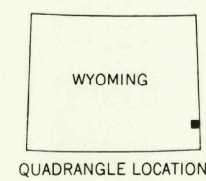
ROCKEAGLE QUADRANGLE  
WYOMING-GOSHEN CO.  
7.5 MINUTE SERIES (TOPOGRAPHIC)



Mapped, edited, and published by the Geological Survey as part of the Department of the Interior program for the development of the Missouri River Basin  
Control by USGS and NOS/NOAA  
Topography from aerial photographs by multiplex methods 1949 and plane-table surveys 1950. Aerial photographs taken 1948  
Polyconic projection. 1927 North American Datum  
10,000-foot grid based on Wyoming coordinate system, east zone  
1000-meter Universal Transverse Mercator grid ticks, zone 13, shown in blue  
The difference between 1927 North American Datum and North American Datum of 1983 (NAD 83) for 7.5 minute intersections is given in USGS Bulletin 1875. The NAD 83 is shown by dashed corner ticks  
Dashed land lines indicate approximate location



ROAD CLASSIFICATION  
Heavy-duty ——— 4 LANE LANE Light-duty ———  
Medium-duty ——— 4 LANE LANE Unimproved dirt ———  
U. S. Route State Route



ROCKEAGLE, WYO.  
42104-A5-TF-024

1950  
PHOTOINSPECTED 1976  
DMA 5068 II SE-SERIES V874

