

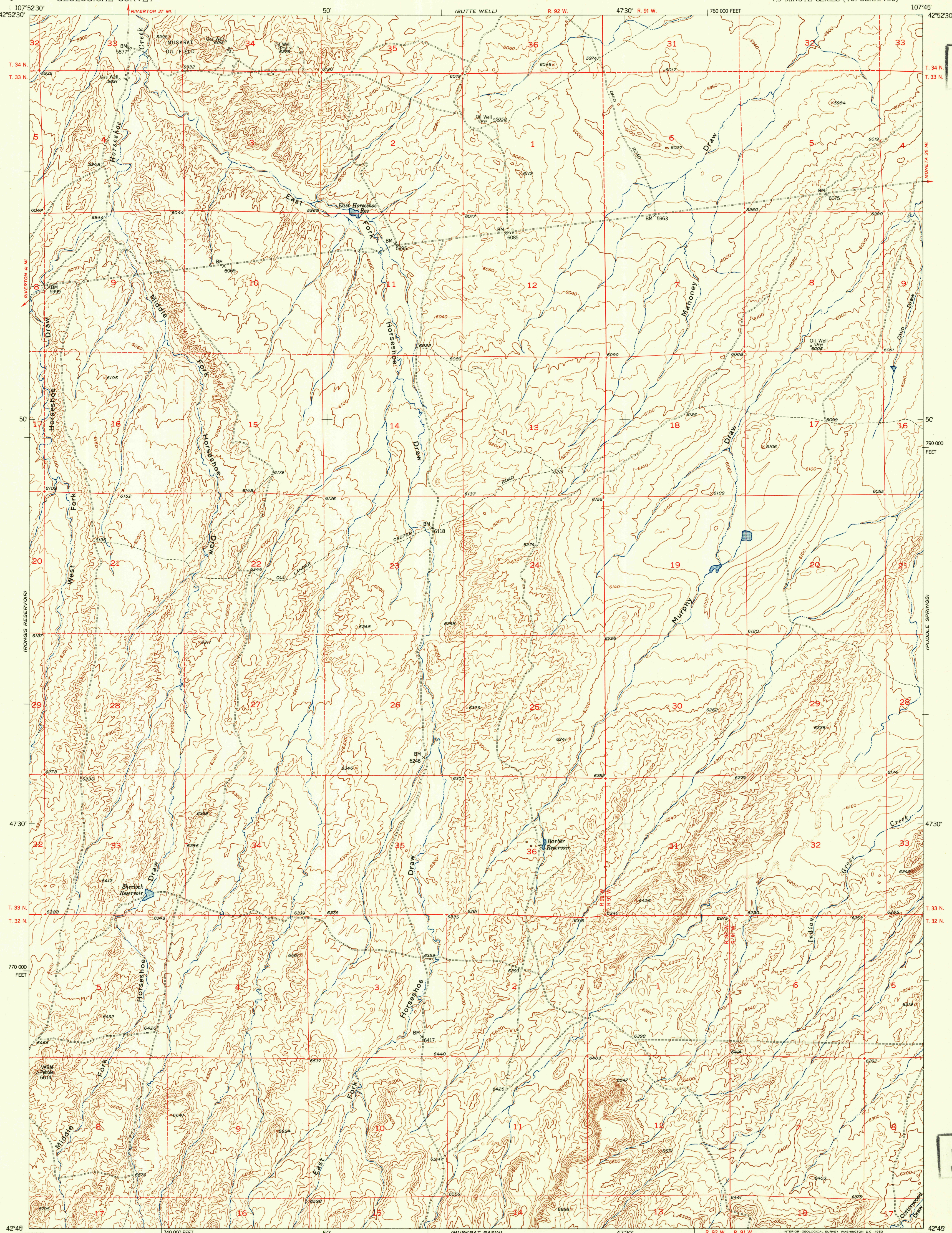
UNITED STATES  
DEPARTMENT OF THE INTERIOR  
GEOLOGICAL SURVEY

RONGIS RESERVOIR SE QUADRANGLE  
WYOMING-FREMONT CO.  
7.5 MINUTE SERIES (TOPOGRAPHIC)

U.S.G.S.  
FILE COPY  
Inspection and Editing

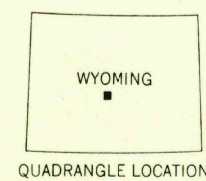
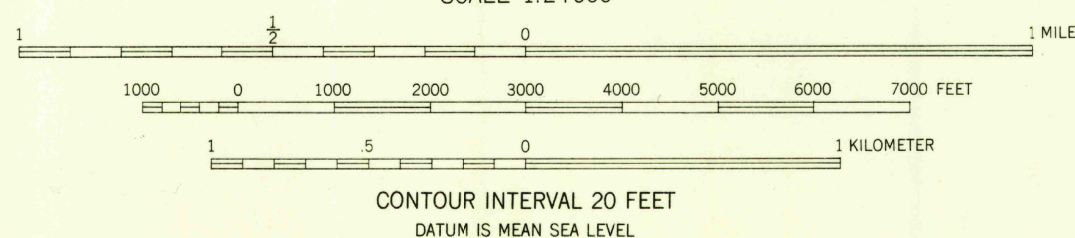
RETURN TO:  
USGS AND HISTORICAL MAP ARCHIVES

U.S.G.S.  
FILE COPY  
Inspection and Editing



Mapped, edited, and published by the Geological Survey  
as part of the Department of the Interior program  
for the development of the Missouri River Basin  
Control by USGS and USC&GS  
Topography from aerial photographs by multiplex methods  
Aerial photographs taken 1949. Field check 1952  
Polyconic projection. 1927 North American datum  
10,000-foot grid based on Wyoming coordinate system,  
west central zones  
Dashed land lines indicate approximate locations

TRUE NORTH  
MAGNETIC NORTH  
APPROXIMATE MEAN  
DECLINATION, 1952



ROAD CLASSIFICATION  
Heavy-duty — + LANE IS LANE Light-duty —  
Medium-duty — + LANE IS LANE Unimproved dirt - - - -  
U.S. Route ○ State Route ○

RONGIS RESERVOIR SE, WYO.  
N4245—W10745/7.5

1952

THIS MAP COMPLIES WITH NATIONAL MAP ACCURACY STANDARDS  
FOR SALE BY U. S. GEOLOGICAL SURVEY, FEDERAL CENTER, DENVER, COLORADO OR WASHINGTON 25, D. C.  
A FOLDER DESCRIBING TOPOGRAPHIC MAPS AND SYMBOLS IS AVAILABLE ON REQUEST.

DEC 15 1953