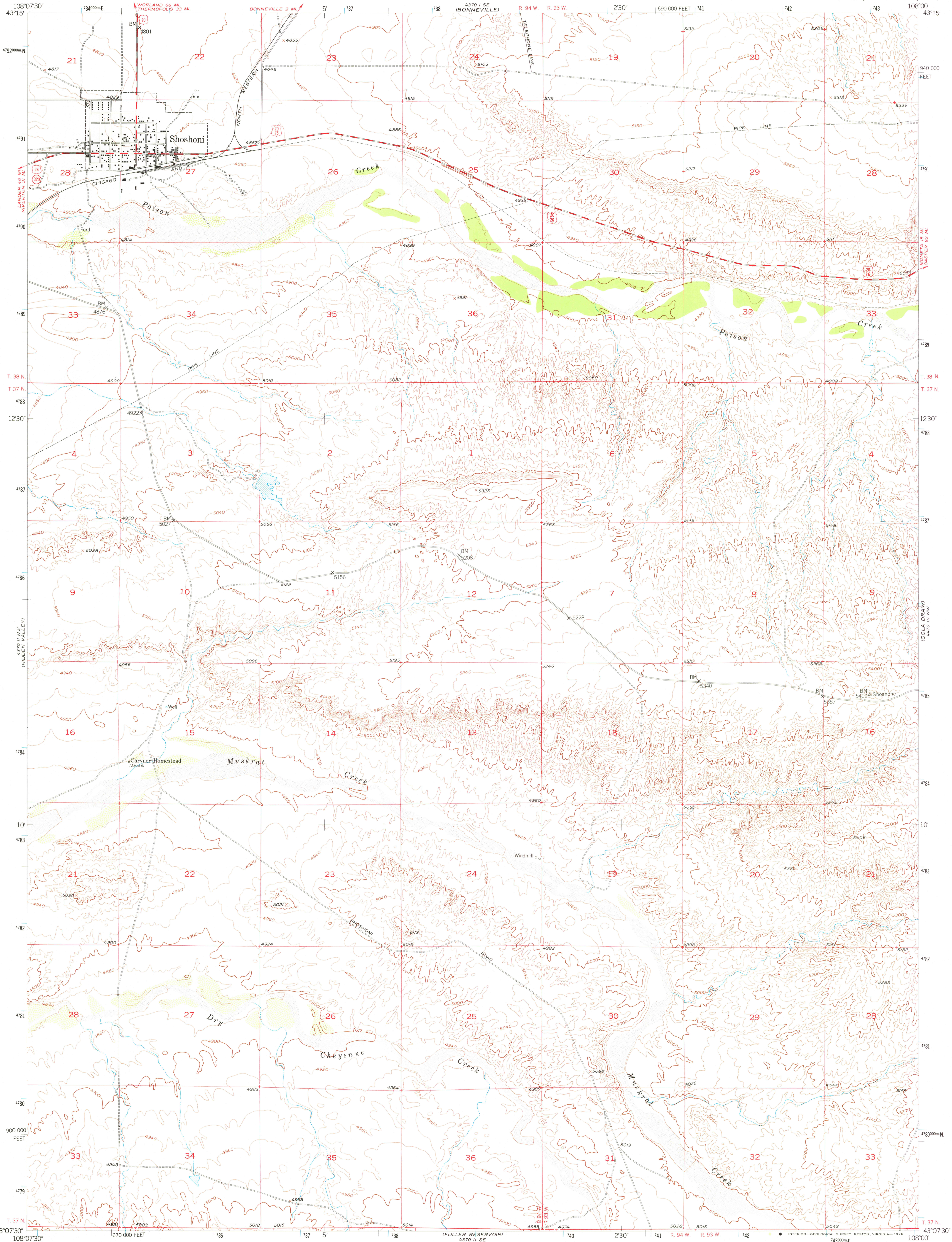
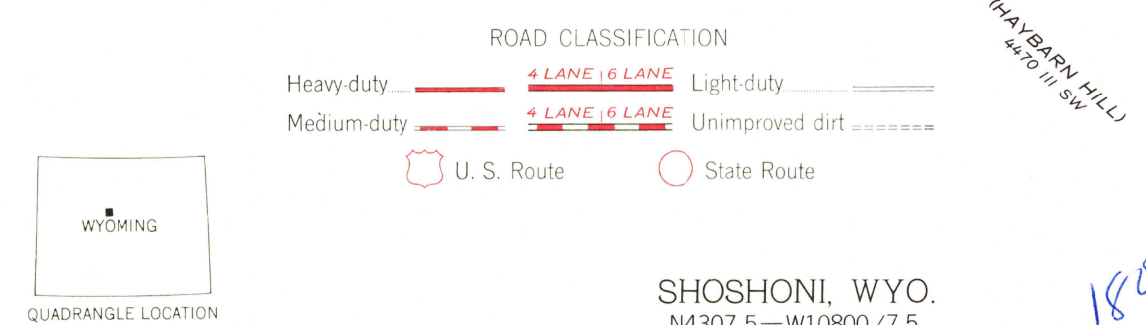
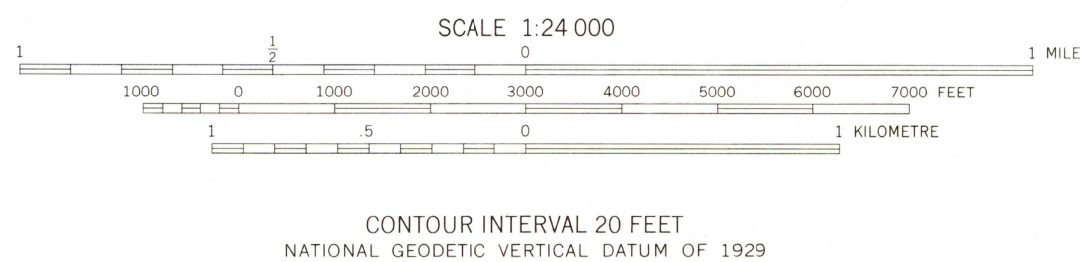
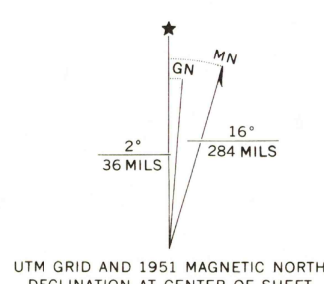


UNITED STATES
DEPARTMENT OF THE INTERIOR
GEOLOGICAL SURVEY

SHOSHONI QUADRANGLE
WYOMING-FREMONT CO.
7.5 MINUTE SERIES (TOPOGRAPHIC)



Mapped, edited, and published by the Geological Survey as part of the Department of the Interior program for the development of the Missouri River Basin.
Control by USGS and USC&GS
Topography from aerial photographs by multiplex methods by Tennessee Valley Authority 1951
Aerial photographs taken 1948. Field check 1951
Polyconic projection, 1927 North American datum
10,000-foot grid based on Wyoming coordinate system, west central zone
1000-metre Universal Transverse Mercator grid ticks, zone 12, shown in blue



THIS MAP COMPLIES WITH NATIONAL MAP ACCURACY STANDARDS
FOR SALE BY U.S. GEOLOGICAL SURVEY, DENVER, COLORADO 80225, OR RESTON, VIRGINIA 22092
A FOLDER DESCRIBING TOPOGRAPHIC MAPS AND SYMBOLS IS AVAILABLE ON REQUEST

USGS
Historical File
Topographic Division

SHOSHONI, WYO.
N4307.5-W10800/7.5
1951
AMS 4370 II NE-SERIES V874

DEC 02 1976

RETURN TO:
USGS NHD HISTORICAL MAP ARCHIVES