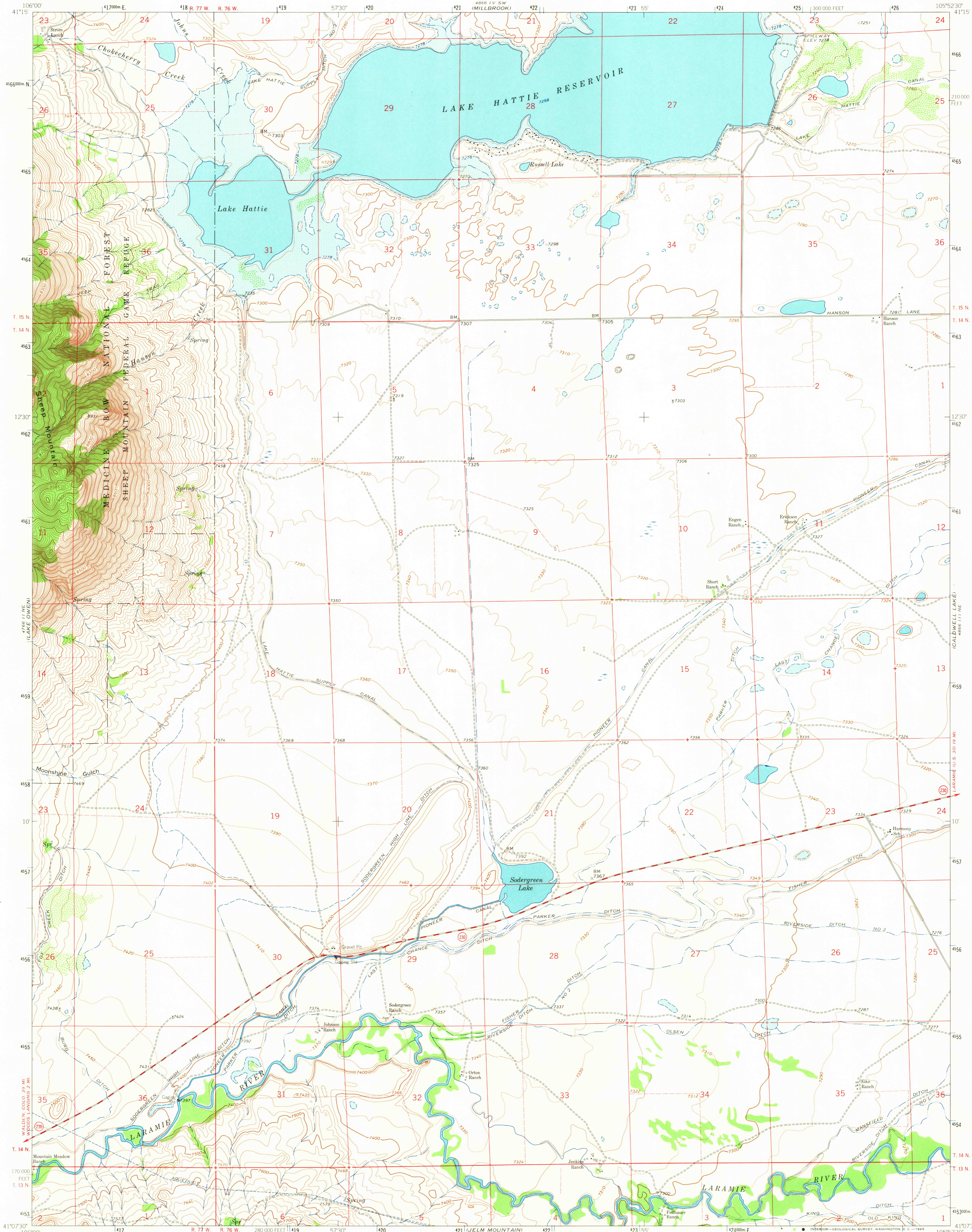
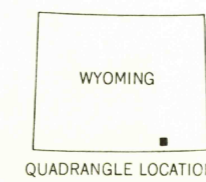
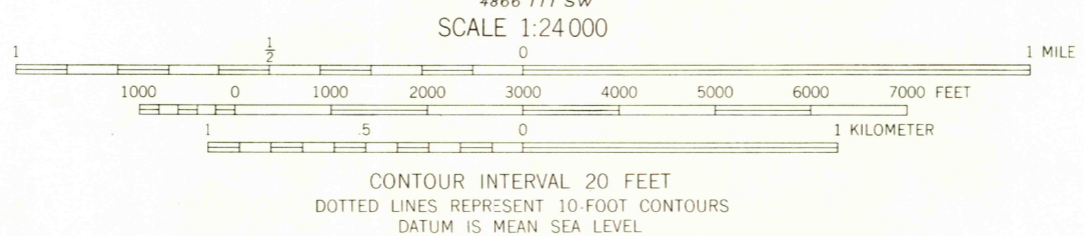
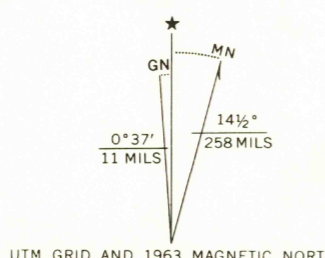


UNITED STATES
DEPARTMENT OF THE INTERIOR
GEOLOGICAL SURVEY

SODERGREEN LAKE QUADRANGLE
WYOMING-ALBANY CO.
7.5 MINUTE SERIES (TOPOGRAPHIC)



Mapped, edited, and published by the Geological Survey as part of the Department of the Interior program for the development of the Missouri River Basin Control by USGS, USC&GS, and Wyoming Geodetic Survey. Topography by photogrammetric methods from aerial photographs taken 1961. Field checked 1963. Polyconic projection. 1927 North American datum. 10,000 foot grid based on Wyoming coordinate system, east zone 1000-meter Universal Transverse Mercator grid ticks, zone 13, shown in blue. Fine red dashed lines indicate selected fence lines. Areas covered by dashed light blue pattern are subject to controlled inundation.



ROAD CLASSIFICATION
Medium-duty ——— Light-duty ———
Unimproved dirt ———
State Route ———

THIS MAP COMPLIES WITH NATIONAL MAP ACCURACY STANDARDS
FOR SALE BY U.S. GEOLOGICAL SURVEY, DENVER 25, COLORADO OR WASHINGTON 25, D.C.
A FOLDER DESCRIBING TOPOGRAPHIC MAPS AND SYMBOLS IS AVAILABLE ON REQUEST

U.S.G.S.
FILE COPY
TOPOGRAPHIC DIVISION

SODERGREEN LAKE, WYO.
N4107.5-W10552.5/7.5

1963

AMS 4866 III NW-SERIES V674

RETURN TO:
USGS MAP HISTORICAL MAP ARCHIVES

OCT 4 1965
2685