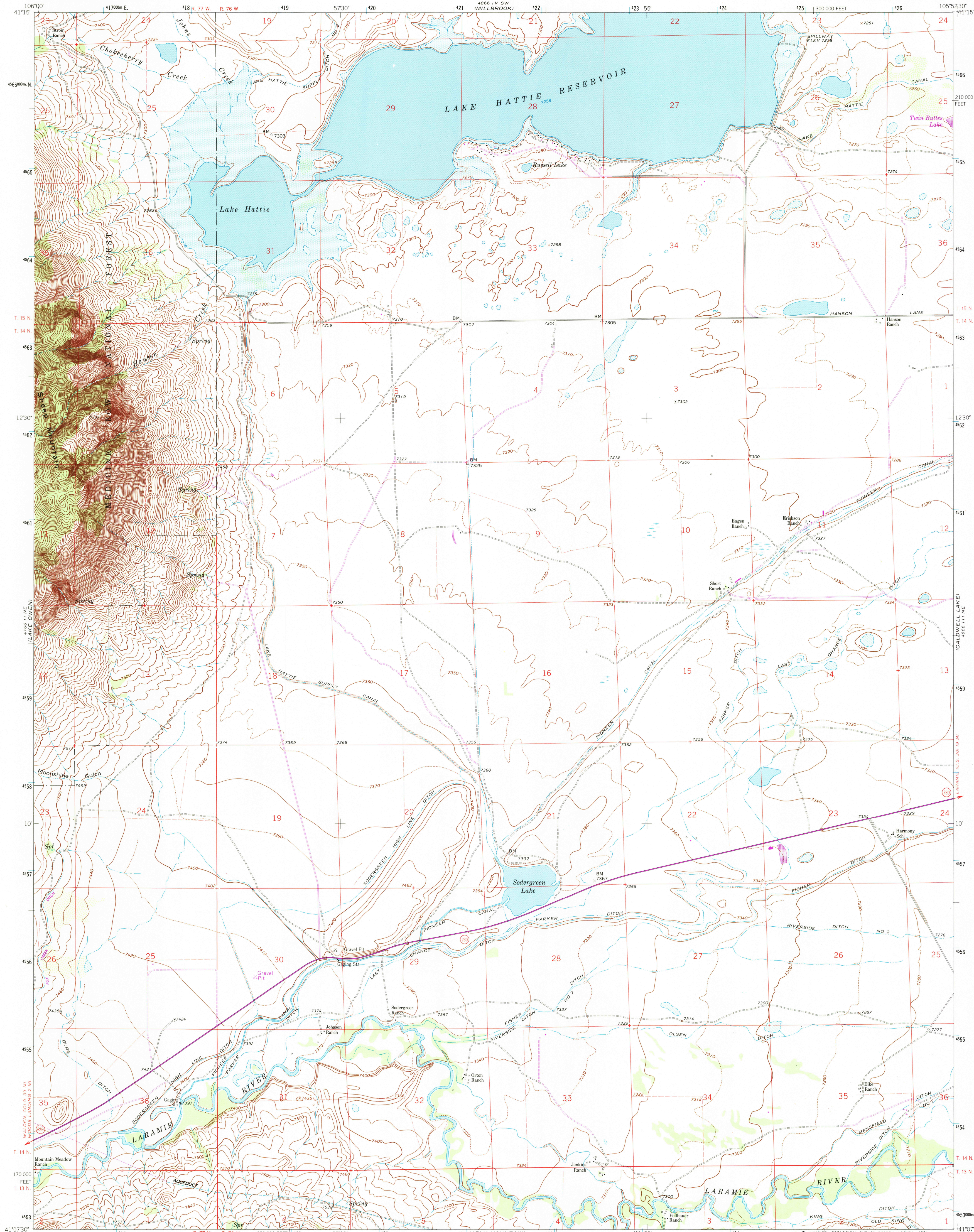


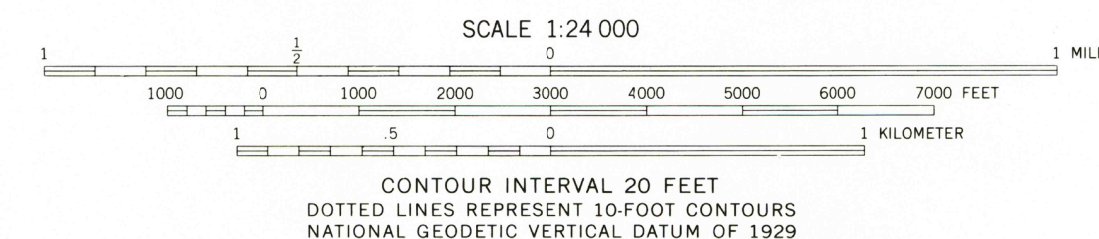
UNITED STATES
DEPARTMENT OF THE INTERIOR
GEOLOGICAL SURVEY

SODERGREEN LAKE QUADRANGLE
WYOMING-ALBANY CO.
7.5 MINUTE SERIES (TOPOGRAPHIC)



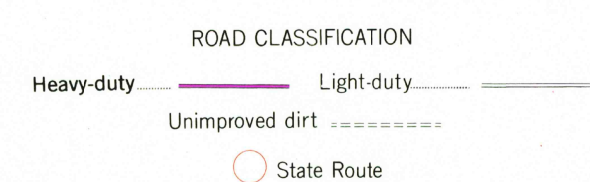
Mapped, edited, and published by the Geological Survey as part of the Department of the Interior program for the development of the Missouri River Basin. Control by USGS, NOS/NOAA, and Wyoming Geodetic Survey. Topography by photogrammetric methods from aerial photographs taken 1961. Field checked 1963. Polyconic projection. 1927 North American Datum. 10,000-foot grid based on Wyoming coordinate system, east zone. 1000-meter Universal Transverse Mercator grid ticks, zone 13, shown in blue. Fine red dashed lines indicate selected fence lines. Areas covered by dashed light blue pattern are subject to controlled inundation. There may be private inholdings within the boundaries of the National or State reservations shown on this map.

To place on the predicted North American Datum 1983 move the projection lines 7 meters north and 49 meters east as shown by dashed corner ticks.



THIS MAP COMPLIES WITH NATIONAL MAP ACCURACY STANDARDS FOR SALE BY U.S. GEOLOGICAL SURVEY, DENVER, COLORADO 80225, OR RESTON, VIRGINIA 22092. A FOLDER DESCRIBING TOPOGRAPHIC MAPS AND SYMBOLS IS AVAILABLE ON REQUEST.

Revisions shown in purple and woodland compiled from aerial photographs taken 1981 and other source data. Partial field check by U.S. Forest Service. Map edited 1984.



SODERGREEN LAKE, WYO.
41105-BB-TF-024

1963
PHOTOREVISED 1984
DMA 4866 III NW-SERIES V874

RETURN TO:
USGS AND HISTORICAL MAP ARCHIVES