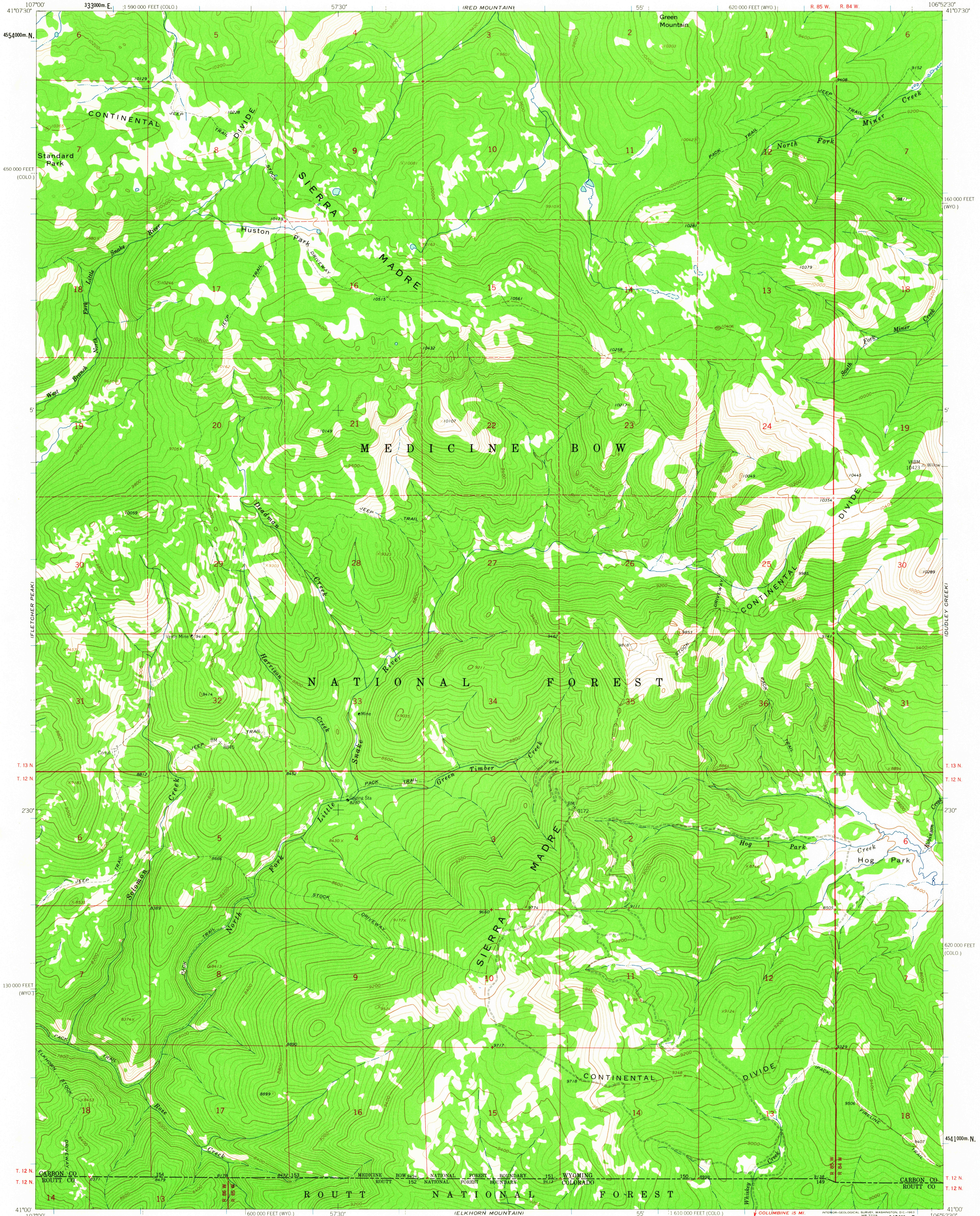


UNITED STATES  
DEPARTMENT OF THE INTERIOR  
GEOLOGICAL SURVEY

SOLOMON CREEK QUADRANGLE  
WYOMING-COLORADO  
7.5 MINUTE SERIES (TOPOGRAPHIC)



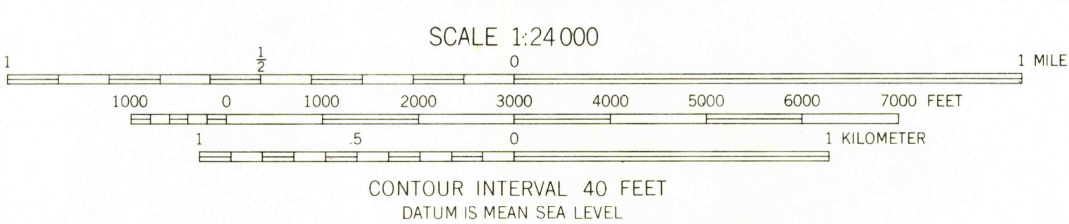
Mapped, edited, and published by the Geological Survey  
as part of the Department of the Interior program  
for the development of the Missouri River Basin

Control by USGS and USC&GS

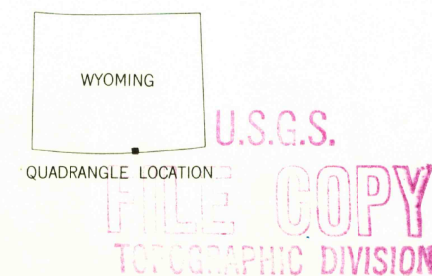
Topography by photogrammetric methods from aerial  
photographs taken 1953 and 1957. Field checked 1961

Polycyclic projection. 1927 North American datum  
10,000-foot grids based on Wyoming coordinate system, east central zone  
and Colorado coordinate system, north zone  
1000-meter Universal Transverse Mercator grid ticks,  
zone 13, shown in blue  
Certain land lines are omitted because of insufficient data

APPROXIMATE MEAN  
DECLINATION, 1961



THIS MAP COMPLIES WITH NATIONAL MAP ACCURACY STANDARDS  
FOR SALE BY U.S. GEOLOGICAL SURVEY, DENVER 25, COLORADO OR WASHINGTON 25, D.C.  
A FOLDER DESCRIBING TOPOGRAPHIC MAPS AND SYMBOLS IS AVAILABLE ON REQUEST



SOLOMON CREEK, WYO.-COLO.  
N4100-W10652.5/7.5

ROAD CLASSIFICATION  
Unimproved dirt =====

1961

RETURN TO:  
USGS AND HISTORICAL MAP ARCHIVES

SEP - 6 1961

2655