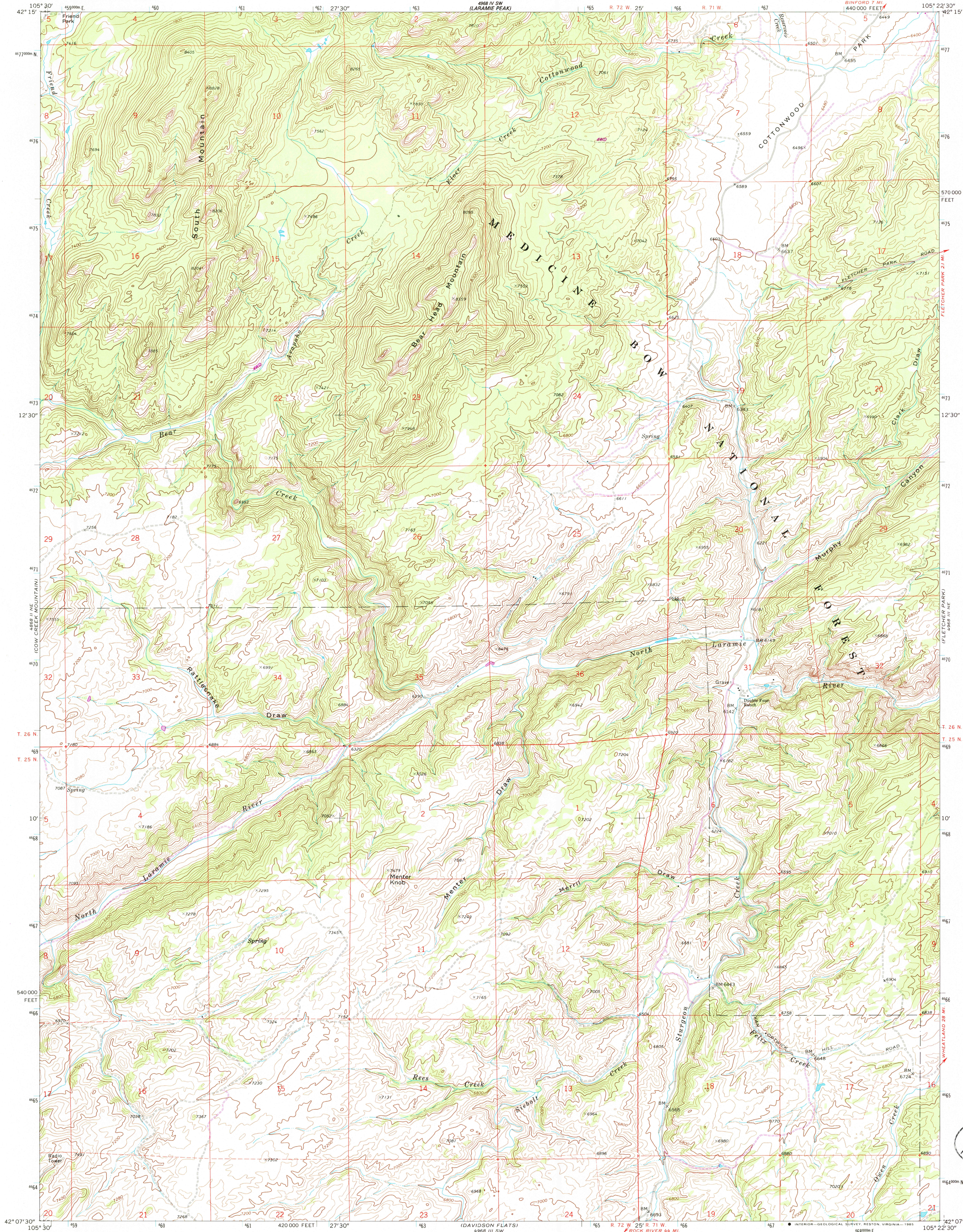


UNITED STATES  
DEPARTMENT OF THE INTERIOR  
GEOLOGICAL SURVEY

SOUTH MOUNTAIN QUADRANGLE  
WYOMING-ALBANY CO.  
7.5 MINUTE SERIES (TOPOGRAPHIC)



USGS NMD RESEARCH  
NOV 25 1985  
REFERENCE COLLECTION

Mapped, edited, and published by the Geological Survey

Control by USGS and NOS/NOAA

Topography by photogrammetric methods from aerial photographs taken 1967. Field checked 1968

Polyconic projection. 1927 North American Datum

10,000-foot grid based on Wyoming coordinate system, east zone

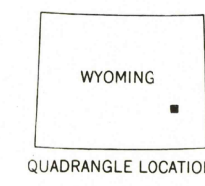
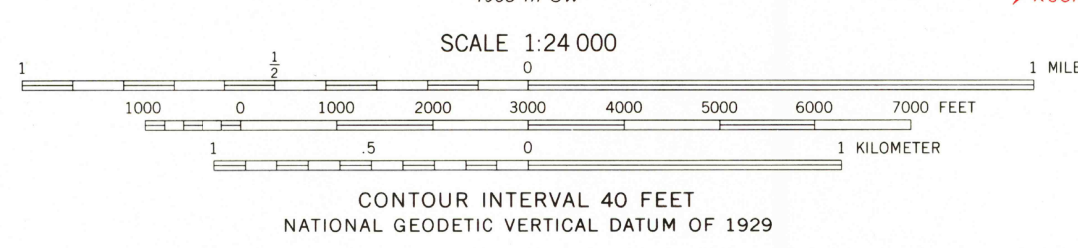
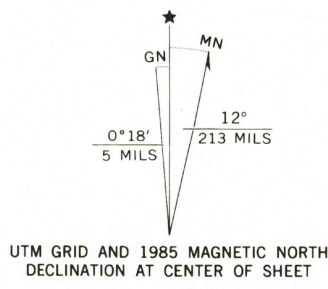
1000-meter Universal Transverse Mercator grid ticks, zone 13, shown in blue

Fine red dashed lines indicate selected fence lines

To place on the predicted North American Datum 1983 move the projection lines 7 meters north and 48 meters east as shown by dashed corner ticks

There may be private inholdings within the boundaries of the National or State reservations shown on this map

Revisions shown in purple and woodland compiled from aerial photographs taken 1981 and other source data. Partial field check by U. S. Forest Service. Map edited 1985



ROAD CLASSIFICATION  
Light-duty road, all weather, improved surface  
Unimproved road, fair or dry weather

SOUTH MOUNTAIN, WYO.  
42105-B4-TF-024

1968  
PHOTOREVISED 1985  
DMA 4968 III NW-SERIES 9874

THIS MAP COMPLIES WITH NATIONAL MAP ACCURACY STANDARDS  
FOR SALE BY U. S. GEOLOGICAL SURVEY, DENVER, COLORADO 80225, OR RESTON, VIRGINIA 22092  
A FOLDER DESCRIBING TOPOGRAPHIC MAPS AND SYMBOLS IS AVAILABLE ON REQUEST