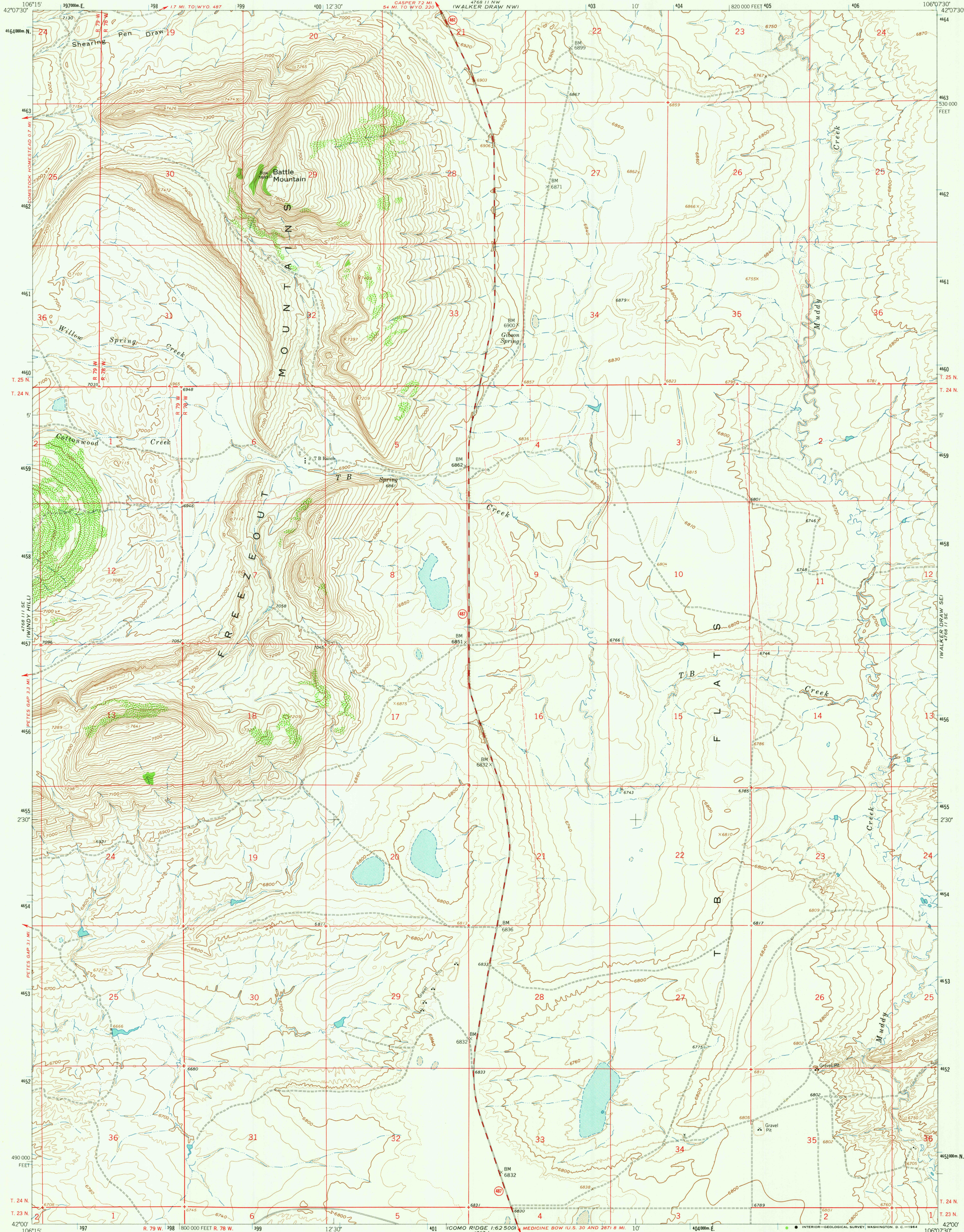


UNITED STATES  
DEPARTMENT OF THE INTERIOR  
GEOLOGICAL SURVEY

T B RANCH QUADRANGLE  
WYOMING-CARBON CO.  
7.5 MINUTE SERIES (TOPOGRAPHIC)



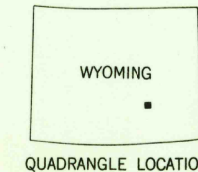
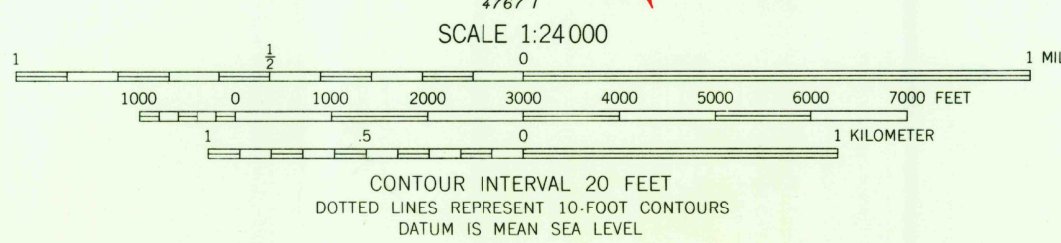
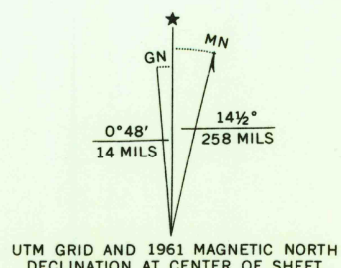
Mapped, edited, and published by the Geological Survey

Control by USGS and USC&GS

Topography by photogrammetric methods from aerial  
photographs taken 1959. Field checked 1961

Polyconic projection. 1927 North American datum  
10,000-foot grid based on Wyoming coordinate system, east central zone  
1000-meter Universal Transverse Mercator grid ticks,  
zone 13, shown in blue

Fine red dashed lines indicate selected fence lines



ROAD CLASSIFICATION  
Medium-duty ——— Light-duty ———  
Unimproved dirt = = = = =  
State Route ○

THIS MAP COMPLIES WITH NATIONAL MAP ACCURACY STANDARDS  
FOR SALE BY U.S. GEOLOGICAL SURVEY, DENVER 25, COLORADO OR WASHINGTON 25, D.C.  
A FOLDER DESCRIBING TOPOGRAPHIC MAPS AND SYMBOLS IS AVAILABLE ON REQUEST

U.S.G.S.  
FILE COPY  
TOPOGRAPHIC DIVISION

T B RANCH, WYO.  
N4200-W10607.5/7.5  
1961

AMS 4768 11 SW-SERIES W874

RETURN TO:  
USGS AND HISTORICAL MAP ARCHIVES

2180

APR 28 1964