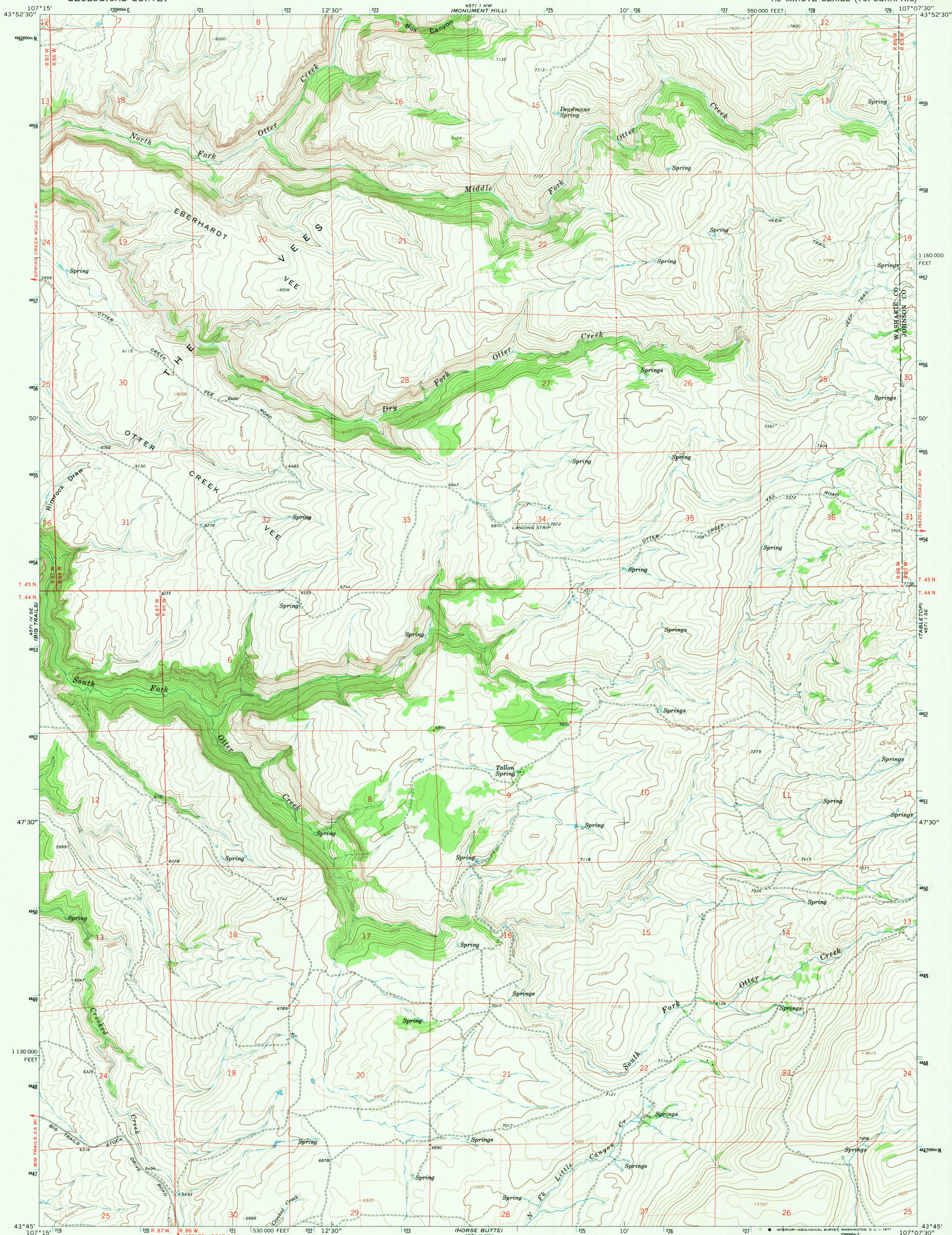
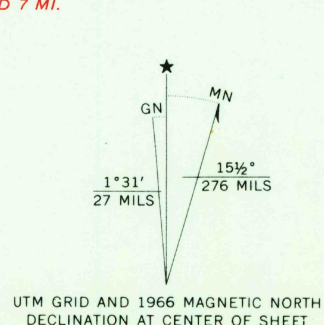


UNITED STATES
DEPARTMENT OF THE INTERIOR
GEOLOGICAL SURVEY

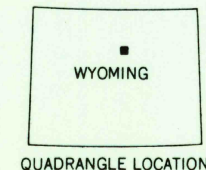
TALLON SPRING QUADRANGLE
WYOMING
7.5 MINUTE SERIES (TOPOGRAPHIC)



Maped, edited, and published by the Geological Survey
Control by USGS and USC&GS
Topography by photogrammetric methods from aerial
photographs taken 1965. Field checked 1966
Polyconic projection. 1927 North American datum
10,000-foot grid based on Wyoming coordinate system,
east central zone
1000-meter Universal Transverse Mercator grid ticks,
zone 13, shown in blue
Fine red dashed lines indicate selected fence lines



SCALE 1:24,000
CONTOUR INTERVAL 40 FEET
DATUM IS MEAN SEA LEVEL



ROAD CLASSIFICATION
Light duty ——— Unimproved dirt - - - - -

USGS
HISTORICAL FILE
TOPOGRAPHIC DIVISION

TALLON SPRING, WYO.
N4345-W10707.5/7.5

1966
AMS 4571 I SW-SERIES V874

2565

SEP 1 1971

RETURN TO:
USGS HISTORICAL MAP ARCHIVES