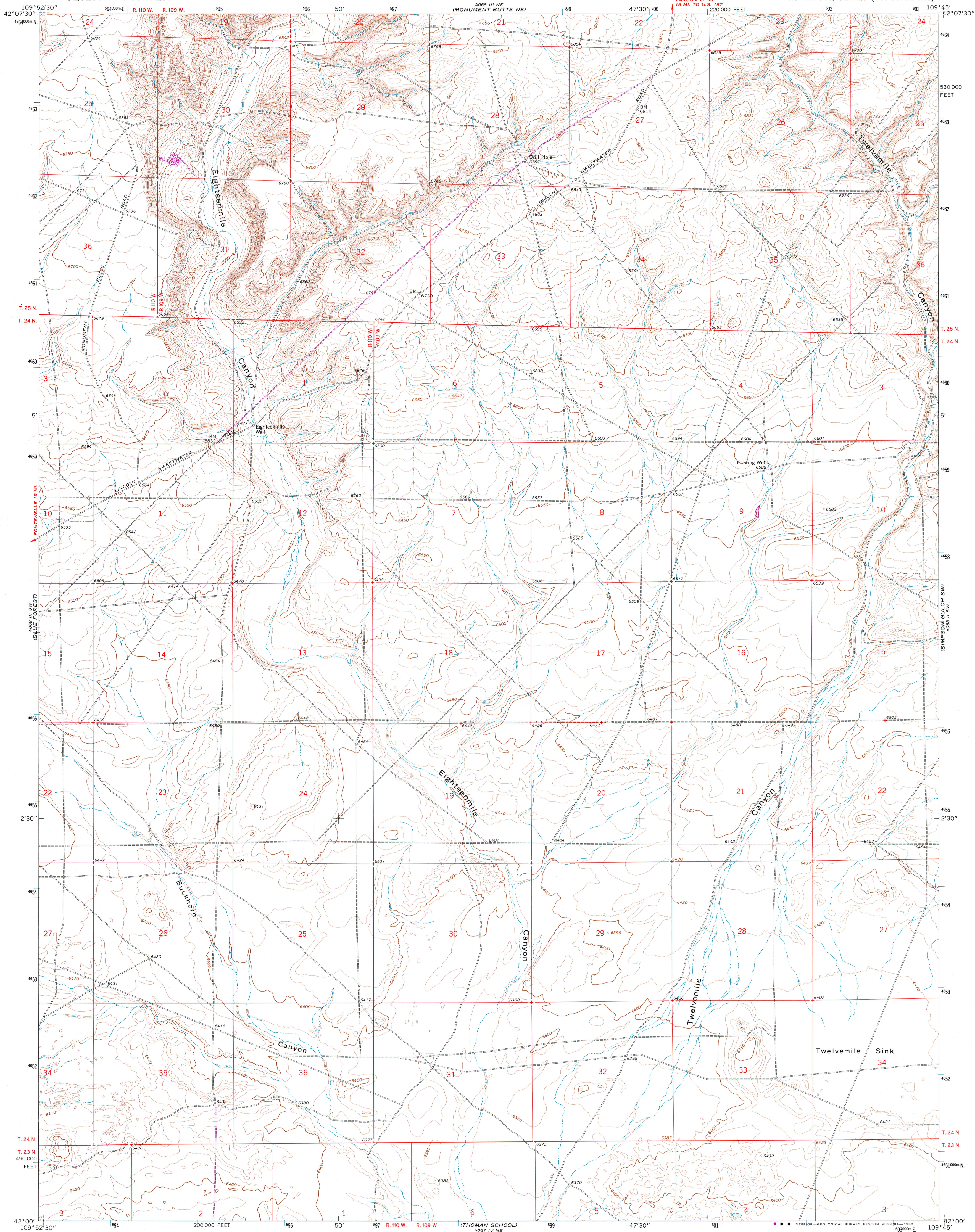


UNITED STATES
DEPARTMENT OF THE INTERIOR
GEOLOGICAL SURVEY

TWELVEMILE SINK QUADRANGLE
WYOMING—SWEETWATER CO.
7.5 MINUTE SERIES (TOPOGRAPHIC)



Mapped, edited, and published by the Geological Survey
Control by USGS and USC&GS

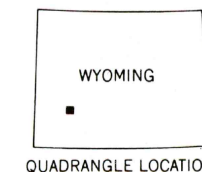
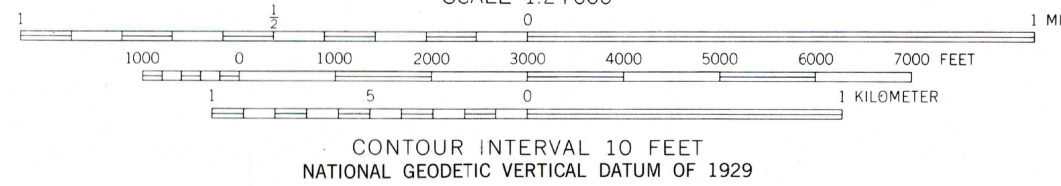
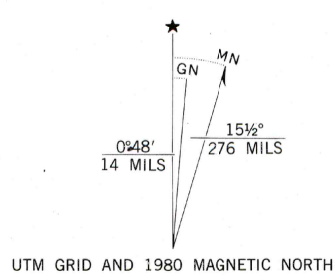
Topography by photogrammetric methods from aerial
photographs taken 1967. Field checked 1968

Polycyclic projection. 1927 North American datum
10,000-foot grid based on Wyoming coordinate system,
west central zone

1000-meter Universal Transverse Mercator grid ticks,
zone 12, shown in blue

To place on the predicted North American Datum 1983
move the projection lines 10 meters north and
59 meters east as shown by dashed corner ticks

Revisions shown in purple compiled from aerial photographs taken
1978. Map edited 1980. This information not field checked



ROAD CLASSIFICATION
Unimproved dirt - - - - -

TWELVEMILE SINK, WYO.
N4200—W10945/7.5

1968
PHOTOREVISED 1980
DMA 4068 III SE—SERIES V874

THIS MAP COMPLIES WITH NATIONAL MAP ACCURACY STANDARDS
FOR SALE BY U.S. GEOLOGICAL SURVEY, DENVER, COLORADO 80225, OR RESTON, VIRGINIA 22092
A FOLDER DESCRIBING TOPOGRAPHIC MAPS AND SYMBOLS IS AVAILABLE ON REQUEST