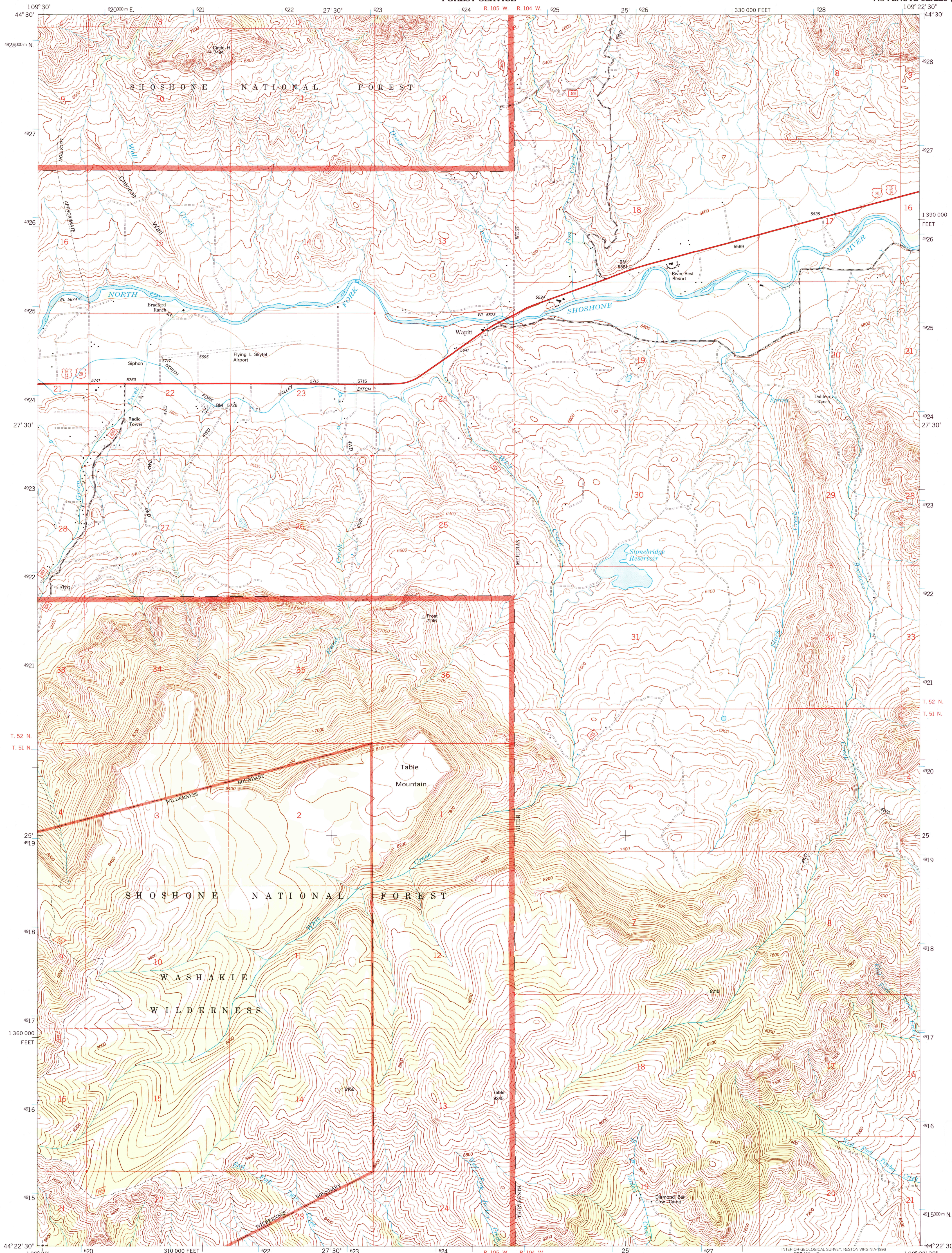




U.S. DEPARTMENT OF THE INTERIOR
U.S. GEOLOGICAL SURVEY

UNITED STATES
DEPARTMENT OF AGRICULTURE
FOREST SERVICE

WAPITI QUADRANGLE
WYOMING-PARK CO.
7.5-MINUTE SERIES (TOPOGRAPHIC)



Produced by the U.S. Geological Survey
Revised by the U.S. Forest Service

Areas outside the National Forest System lands may not have been revised.
Control by USGS and NOS/NOAA

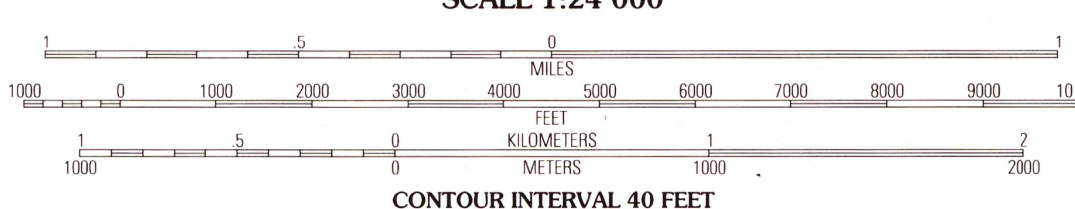
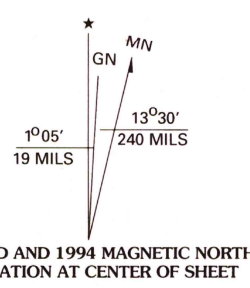
Compiled from aerial photographs taken 1981. Revised from aerial
photographs taken 1989. Partial field check by U. S. Forest Service 1991

North American Datum of 1927 (NAD 27). Projection and 10 000-foot ticks:
Wyoming coordinate system, west central zone (Transverse Mercator). Blue
1000-meter Universal Transverse Mercator ticks, zone 12.

North American Datum of 1983 (NAD 83) is shown by dashed corner ticks.
The values of the shift between NAD 27 and NAD 83 for 7.5-minute
intersections are obtainable from National Geodetic Survey NADCON software.

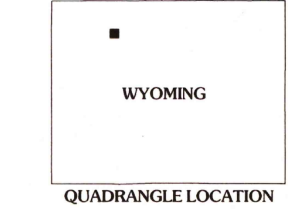
Non-National Forest System lands within the National Forest
Inholdings may exist in other National or State reservations.

This map is not a legal land line or ownership document. Public lands are
subject to change and leasing, and may have access restrictions; check
with local offices. Obtain permission before entering private lands.



NATIONAL GEODETIC VERTICAL DATUM OF 1929
TO CONVERT FEET TO METERS MULTIPLY BY 0.3048

THIS MAP COMPLIES WITH NATIONAL MAP ACCURACY STANDARDS
FOR SALE BY U.S. GEOLOGICAL SURVEY
DENVER, COLORADO 80225 OR RESTON, VIRGINIA 22092
A FOLDER DESCRIBING TOPOGRAPHIC MAPS AND SYMBOLS IS AVAILABLE ON REQUEST



QUADRANGLE LOCATION

1	2	3	1 Dead Indian Peak 2 Jim Mountain 3 Loran Mountain 4 Flag Peak 5 Castle Rock Creek 6 Parnipon Mountain 7 Twin Creek 8 Belnap Creek
4		5	
6	7	8	

Interstate.....	15	Primary highway.....	
U. S.	101	Secondary highway.....	
State	10	Light-duty road.....	
County	5	Paved.....	
National Forest, suitable for passenger cars.....	105	Gravel.....	
National Forest, suitable for high clearance vehicles.....	106	Dirt.....	
National Forest Trail	107	Composition unspecified.....	
		Unimproved; 4 wheel drive.....	
		Trail.....	
		Gate.....	

USGS Library
Reston, VA.
Topo Archive

JUN 18 2006

ISBN 0-607-86615-2
9 780607 866155

USGS LIBRARY - RESTON
3 1818 00509943 5

WAPITI, WYOMING
44109-D4-TF-024
1991
DMA 4172 IV NW - SERIES V874