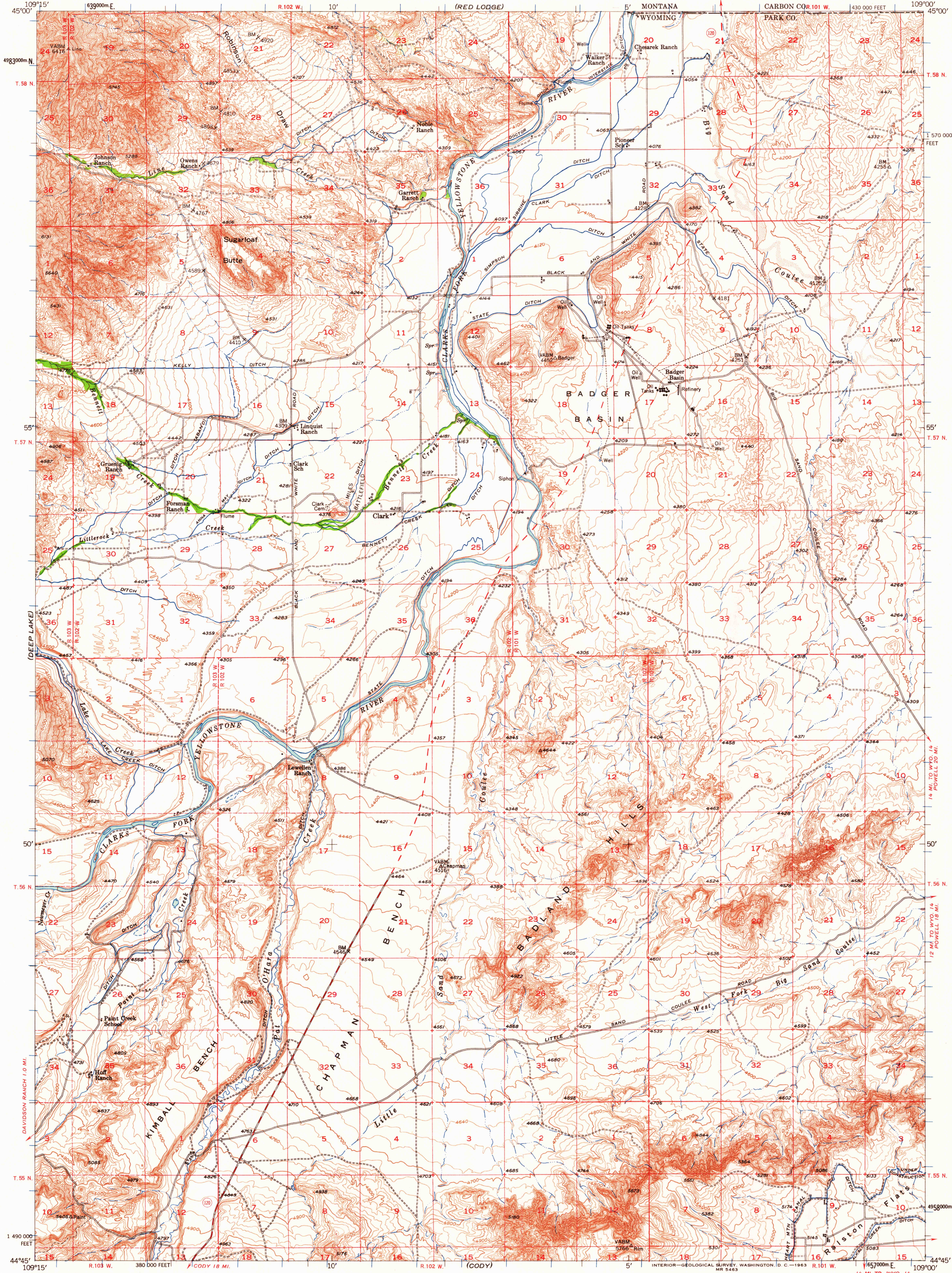


UNITED STATES
DEPARTMENT OF THE INTERIOR
GEOLOGICAL SURVEY

CLARK QUADRANGLE
WYOMING-MONTANA
15 MINUTE SERIES (TOPOGRAPHIC)



Stereo compilation by Fairchild Aerial Surveys, Inc. and the Geological Survey for the Bureau of Reclamation Field examination and publication by the Geological Survey as part of the Department of the Interior program for the development of the Missouri River Basin

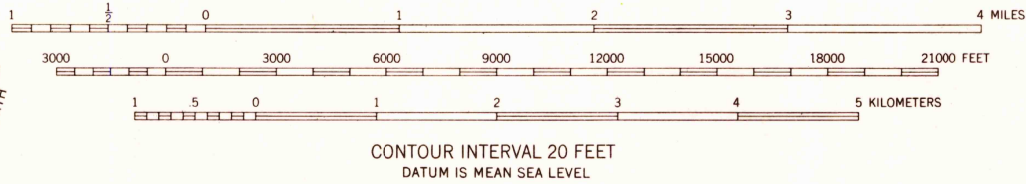
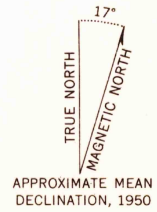
Control by USGS and USC&GS

Topography from aerial photographs by stereoplanigraph methods, 1949. Aerial photographs taken July 1944 and August 1948. Field check 1950

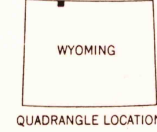
Polyconic projection. 1927 North American datum 10,000-foot grid based on Wyoming coordinate system, west central zone

Dashed land lines indicate approximate location

1000-meter Universal Transverse Mercator grid ticks, zone 12, shown in blue



THIS MAP COMPLIES WITH NATIONAL MAP ACCURACY STANDARDS
FOR SALE BY U. S. GEOLOGICAL SURVEY, DENVER 25, COLORADO OR WASHINGTON 25, D. C.
A FOLDER DESCRIBING TOPOGRAPHIC MAPS AND SYMBOLS IS AVAILABLE ON REQUEST



ROAD CLASSIFICATION
Medium-duty ——— Light-duty ———
Unimproved dirt ———
State Route ———

CLARK, WYO.-MONT.
N4445-W10900/15
1950

RETURN TO:
USGS NHD HISTORICAL MAP ARCHIVES

APR 11 1963

1740