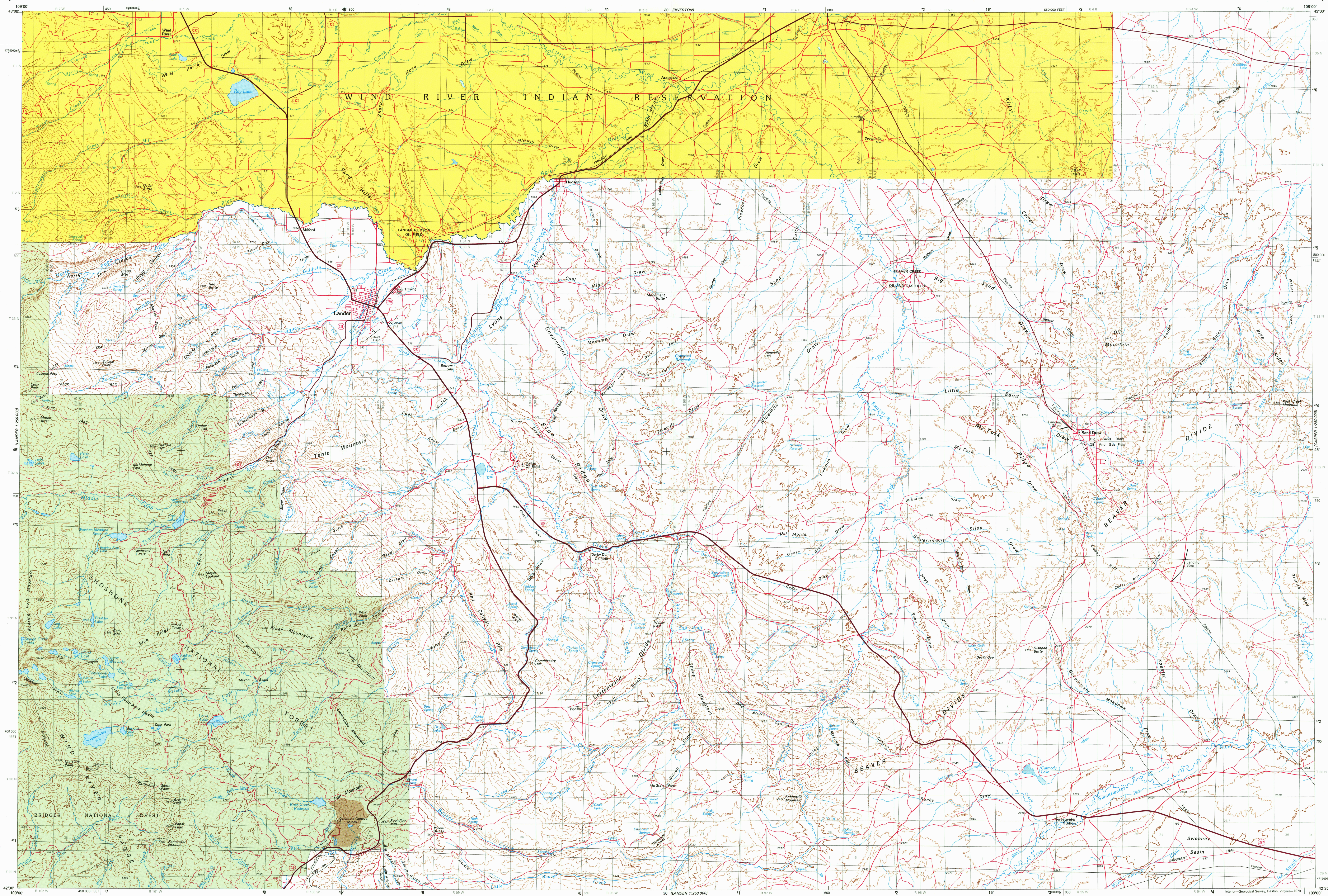


(GANNETT PLAN)

UNITED STATES
DEPARTMENT OF THE INTERIOR
GEOLOGICAL SURVEY

LANDER QUADRANGLE
WYOMING—FREMONT CO.
1:100 000-SCALE SERIES (TOPOGRAPHIC)

(AMMTC 1:250 000)

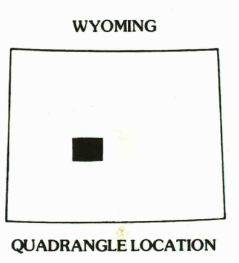
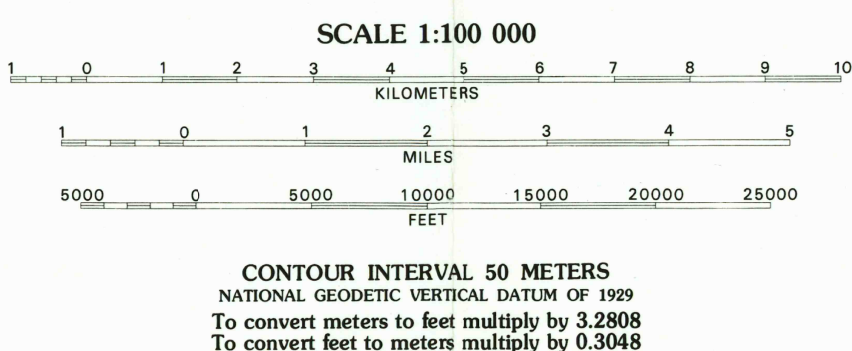
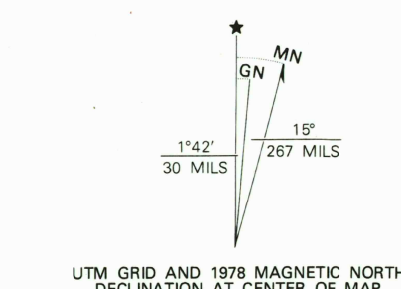


(LANDER 1:250 000)

Produced by the Geological Survey
in cooperation with the Soil Conservation Service
Compiled from USGS 1:24 000-scale topographic maps
dated 1951-1960. See index for dates of individual maps.
Partially revised from aerial photographs taken 1975 and
other source data. Revised information not field checked.
Map edited 1978.
Projection and 10 000-meter grid, zone 12
Universal Transverse Mercator
50 000-foot grid ticks based on Wyoming coordinate
system, west central zone, 1927 North American datum.
There may be private inholdings within the boundaries of
the National or State reservations shown on this map.

MAP INDEX							
1	2	3	4	5	6	7	8
9	10	11	12	13	14	15	16
17	18	19	20	21	22	23	24
25	26	27	28	29	30	31	32

1	Wind River-1952	17	Cory Mountain-1953
2	Play Lake-1952	18	Cloud Hills-1953
3	Lander NW-1952	19	Wolf Ranch-1953
4	Madison-1952	20	Water Park-1953
5	Arnpoke NE-1958	21	Wolf Ranch-1953
6	Arnpoke NW-1958	22	Talonsville Ranch-1958
7	Arnpoke SE-1958	23	Arnpoke Ranch-1958
8	Arnpoke SW-1958	24	Arnpoke Ranch-1958
9	Arnpoke NE-1958	25	Arnpoke Ranch-1958
10	Arnpoke NW-1958	26	Arnpoke Ranch-1958
11	Arnpoke SE-1958	27	Arnpoke Ranch-1958
12	Arnpoke SW-1958	28	Arnpoke Ranch-1958
13	Arnpoke NE-1958	29	Arnpoke Ranch-1958
14	Arnpoke NW-1958	30	Arnpoke Ranch-1958
15	Arnpoke SE-1958	31	Arnpoke Ranch-1958
16	Arnpoke SW-1958	32	Arnpoke Ranch-1958



LEGEND

Perennial stream, lake

Intermittent stream, lake

Village or locality

Landmark structure

Public park or recreation area

Forest or game land area

Other public area or Military or Indian reservation

ROAD CLASSIFICATION

Primary highway, hard surface

Secondary highway, hard surface

Light-duty road, hard or improved surface

Street or other road

Trail

U.S. route

State route

USGS AND HISTORICAL MAP ARCHIVES

JAN 1996

REC'D FILE COPY

LANDER, WYOMING

N4230-W10800/30x60

1978