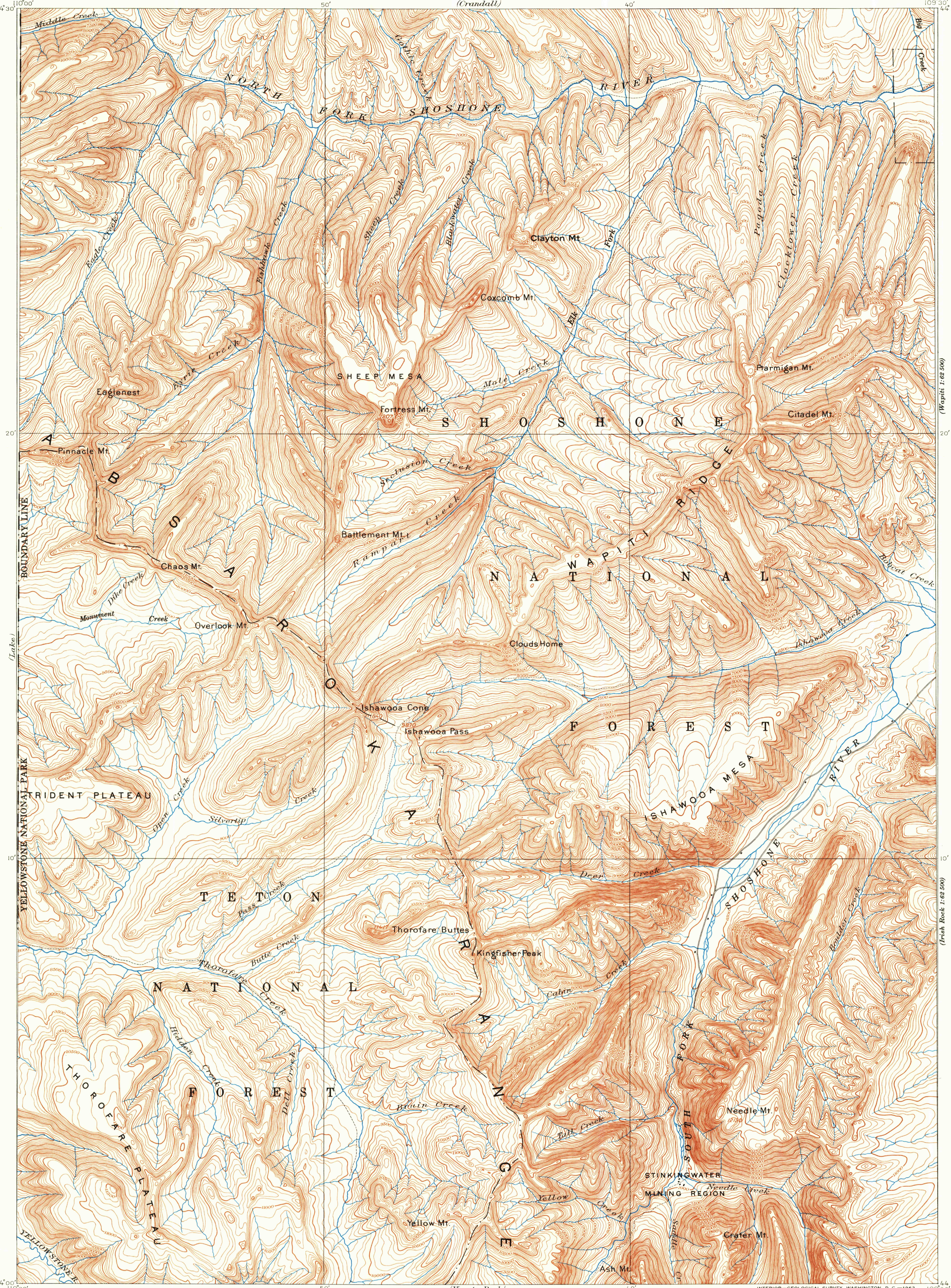


(Pelican Cove)  
1:62,500

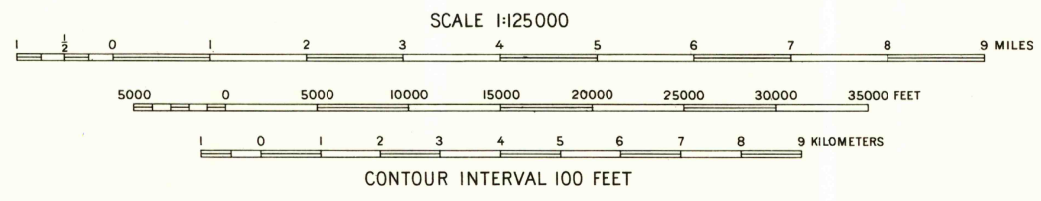
UNITED STATES  
DEPARTMENT OF THE INTERIOR  
GEOLOGICAL SURVEY

WYOMING  
PARK COUNTY  
ISHAWOOA QUADRANGLE

(Pel O'Hara Mtn)  
1:62,500



A.H. Thompson, Geographer.  
Triangulation and Topography by Frank Tweedy.  
Surveyed in 1893.



INTERIOR—GEOLOGICAL SURVEY, WASHINGTON, D. C.—1962  
MR 3564  
Polyconic projection. To place on 1927 North American datum  
move projection lines 350 feet east and 400 feet north  
Surveyed by reconnaissance methods

ISHAWOOA, WYO.  
N4400—W10930/30  
1893

FOR SALE BY U. S. GEOLOGICAL SURVEY, DENVER 25, COLORADO OR WASHINGTON 25, D. C.  
A FOLDER DESCRIBING TOPOGRAPHIC MAPS AND SYMBOLS IS AVAILABLE ON REQUEST

RETURN TO:  
USGS AND HISTORICAL MAP ARCHIVES

JAN 10 1963

1595