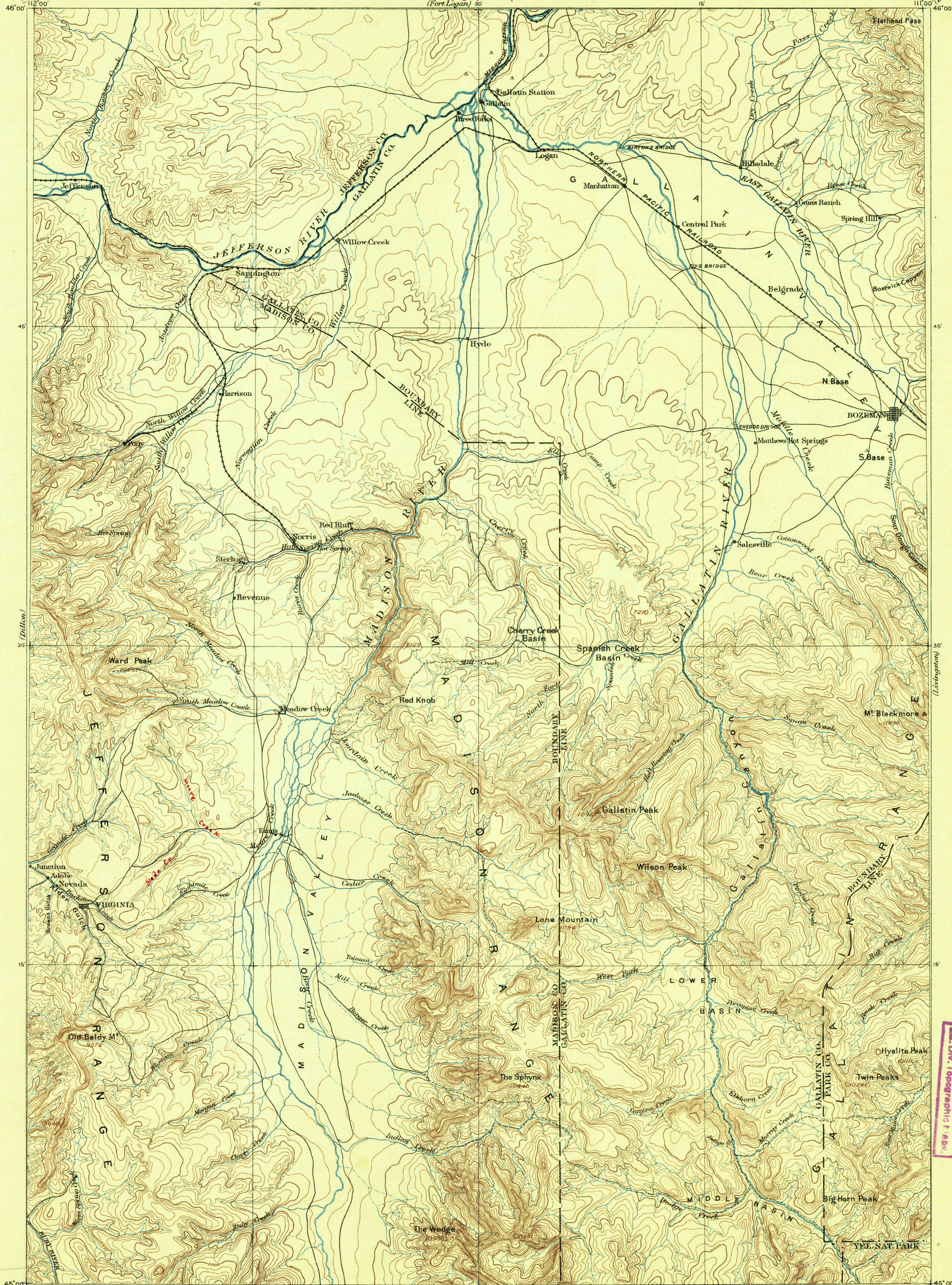


U. S. G. S.  
FILE COPY  
Editor of Topographic Maps.  
(Fort Logan) 30'

MONTANA — YEL. NAT.  
THREE FORKS SHEET

U.S. GEOLOGICAL SURVEY.  
CHARLES D. WALCOTT, DIRECTOR.



U. S. G. S.  
FILE COPY  
Ed. Div. Topographic Maps

U. S. G. S.  
FILE COPY  
Ed. Div. Topographic Maps

Henry Gannett, Chief Geographer.  
A.H. Thompson, Geographer in charge.  
Triangulation by J.H. Renshaw and E.M. Douglas.  
Topography by the Northern Transcontinental Survey  
and Frank Tweedy.  
Surveyed in 1886.

N.T. Survey  
E. Tweedy

U. S. G. S.  
FILE COPY  
Ed. Div. Topographic Maps.

Scale 250,000  
0 1 2 3 4 5 6 7 8 9 10 Miles  
0 2 4 6 8 10 Kilometers  
Contour Interval 200 feet  
Datum is mean Sea level

USGS  
Historical File  
Topographic Division

Edition of May 1895. 600 600

Mont  
Three Forks