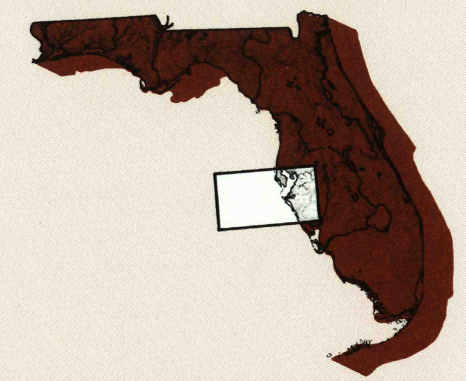


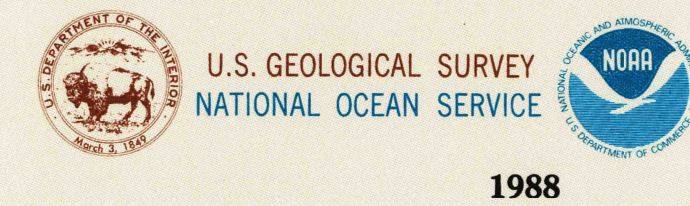
St. Petersburg FLORIDA

1:250 000-scale metric
topographic-bathymetric map



1 X 2 DEGREE QUADRANGLE
SHOWING

- Contours and elevations in meters
- Highways, roads and other manmade structures
- Water features
- Woodland areas
- Geographic names
- Bathymetric contours in meters



Produced by the United States Geological Survey and the National Ocean Service
Compiled from 1:100 000-scale topographic maps dated 1979-1981
Planimetry revised from aerial photographs taken 1984 and other sources
Revised information not field checked. May edited 1988.
Bathymetry compiled by the National Ocean Service from tide-coordinated hydrographic surveys. This information is not intended for navigational purposes. Mean lower low water (dotted) line and mean high water (solid) line compiled by NOS from tide-coordinated aerial photographs.
Offshore protection survey data, shown in red, furnished by the Minerals Management Service. Heavy lines indicate limits of Outer Continental Shelf Official Protection Diagram dated June 2, 1983. The protections on this map are not for Federal leasing purposes. For such purposes, refer to OCS Official Protection Diagram available from the Minerals Management Service.
Projection and 10 000-meter grid, zone 17: Universal Transverse Mercator 100 000-foot and ticks based on Florida coordinate system, zone 17, west zone, 1927 North American Datum. To place on the predicted North American Datum 1983, move the projection lines 31 meters south and 15 meters west.
Location of geodetic control established by government agencies is shown on corresponding 1:250 000-scale Geodetic Control Diagram.
There may be private inholdings within the boundaries of the National or State reservations shown on this map.
1988 MAGNETIC DECLINATION FROM TRUE NORTH VARIES FROM 1° 08' MINUS WESTERLY FOR THE CENTER OF THE WEST EDGE TO 2° 58' MINUS WESTERLY FOR THE CENTER OF THE EAST EDGE. MEAN ANNUAL CHANGE IS 1' WESTERLY.

CONTOUR INTERVAL 10 METERS
NATIONAL GEODETIC VERTICAL DATUM OF 1929
ELEVATIONS SHOWN TO THE NEAREST METER
BATHYMETRIC CONTOUR INTERVAL 10 METERS
WITH SUPPLEMENTARY 2 METER CONTOURS
DATUM IS MEAN LOWER LOW WATER
THE RELATIONSHIP BETWEEN THE TWO DATUMS IS VARIABLE

BASE MAP COMPLETES WITH NATIONAL MAP ACCURACY STANDARDS. BATHYMETRIC SURVEY DATA COMPLETES WITH INTERNATIONAL HYDROGRAPHIC ORGANIZATION (IHO) SPECIAL PUBLICATION 44 ACCURACY STANDARDS AND/OR STANDARDS USED AS OF THE DATE OF THE SURVEYS

CONVERSION TABLE			
Meters	Feet	Meters	Feet
1	3.2808	10	32.8084
2	6.5617	20	65.6168
3	9.8425	30	98.4251
4	13.1234	40	131.2335
5	16.4042	50	164.0419
6	19.6850	60	196.8504
7	22.9659	70	229.6598
8	26.2467	80	262.4672
9	29.5276	90	295.2756
10	32.8084	100	328.0840

To convert meters to feet
multiply by 3.2808
To convert feet to meters
multiply by 0.3048

FOR SALE BY U.S. GEOLOGICAL SURVEY
DENVER, COLORADO 80225, OR RESTON, VIRGINIA 22092
AND NATIONAL OCEAN SERVICE, ROCKVILLE, MARYLAND 20852
*BATHYMETRIC MAPS FOR SALE BY NOS ONLY

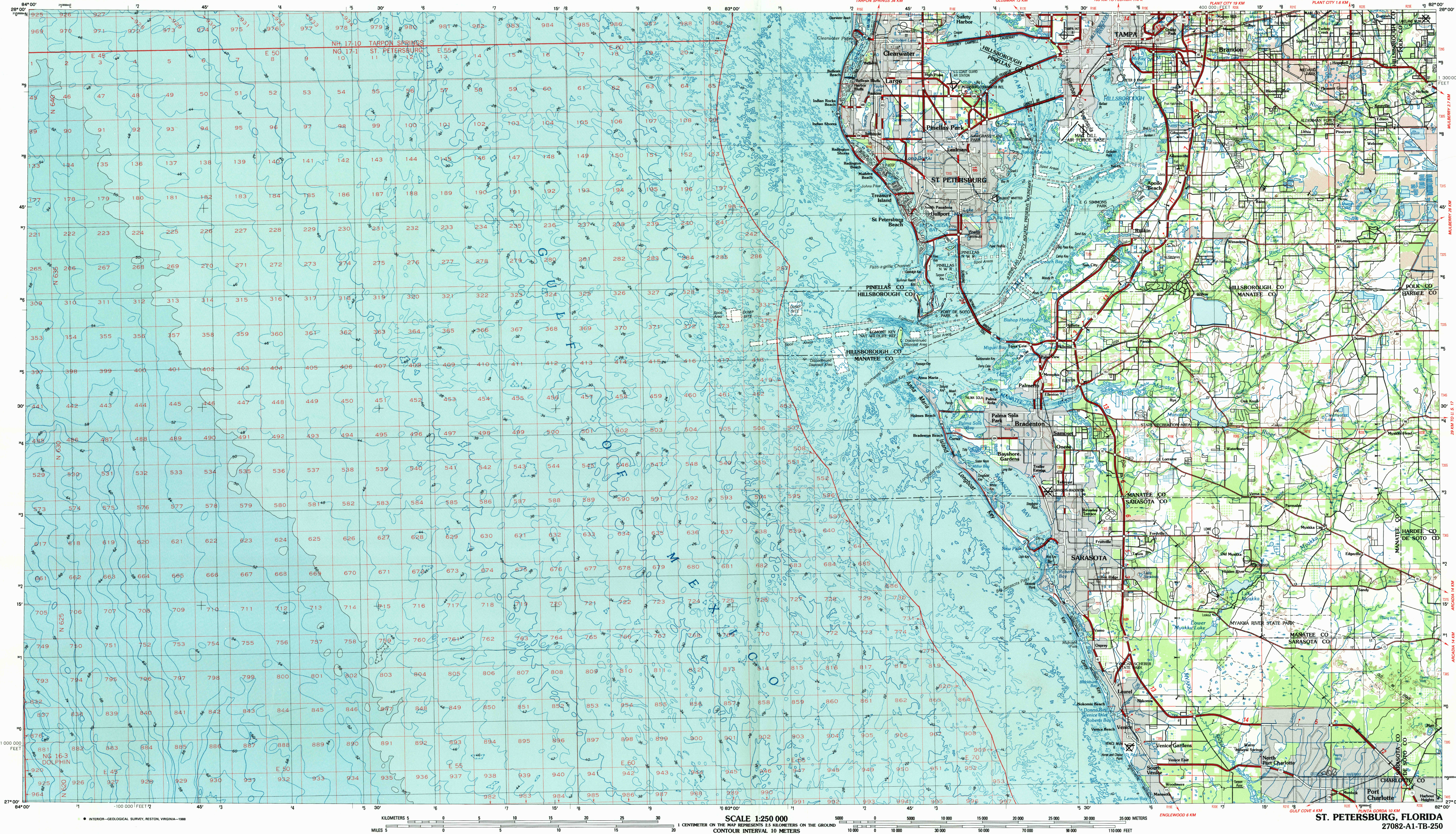
Topographic Map Symbols

Figures in red denote approximate distances in kilometers between markers

Dual highway, interchange	
Primary highway, hard surface	
Secondary highway, hard surface	
Light duty road, hard or improved surface	
Other road, trail	
Road marker, Interstate U.S. State	
Bridge, overpass, underpass	
Tunnel: road, railroad	
Railroad: standard gauge; single, multiple track	
Railroad: narrow gauge; single, multiple track	
Built-up area, locality, elevation	
Airport: runway pattern known; unknown	
National boundary	
State boundary	
County boundary	
National or State reservation boundary	
Land grant boundary	
U.S. public lands survey: range, township (surveyed)	
U.S. public lands survey: range, township (proposed)	
Pipeline, pipeline, underground	
Dam, landmark feature: landmark building	
Well, water, other; spring; tank	
Cave, mine, quarry, oil platform	
Landmark area; landmark exposed	
Disrupted surface: steep slope, lava, sand	
Contours: index, intermediate, supplementary	
Bathymetric contours: index, primary	
Bathymetric contours: index, intermediate, supplementary	
Stream, lake, perennial, intermittent	
Rapids, large and small; falls, large and small	
Land subject to controlled inundation: marsh, swamp	
Woodland: orchard, vineyard	

A pamphlet describing topographic maps is available on request

ST. PETERSBURG, FLORIDA



• INTERIOR—GEOLOGICAL SURVEY, RESTON, VIRGINIA—1988

SCALE 1:250 000
1 CENTIMETER ON THE MAP REPRESENTS 2.5 KILOMETERS ON THE GROUND
CONTOUR INTERVAL 10 METERS

HYDROGRAPHIC SURVEY INFORMATION

SURVEY NUMBER	SURVEY DATE	SURVEY SCALE	SURVEY LINE SPACING (NAUT. MILES)	SURVEY NUMBER	SURVEY DATE	SURVEY SCALE	SURVEY LINE SPACING (NAUT. MILES)
H-4840	1926	1:40 000	29-29	H-8004	1964	1:10 000	03-09
H-4841	1926	1:40 000	29-29	H-8005	1964-65	1:10 000	02-07
H-7263	1960	1:100 000	20-30	H-8009	1964	1:10 000	02-07
H-7264	1960	1:100 000	20-30	H-8010	1964	1:10 000	02-07
H-7675	1960	1:10 000	03-07	H-8127	1964	1:20 000	02-08
H-7676	1960	1:10 000	03-07	H-8128	1964	1:20 000	02-08
H-7677	1960	1:10 000	03-07	H-8129	1964	1:20 000	02-08
H-7678	1960	1:10 000	03-08	H-8130	1964	1:20 000	02-08
H-7679	1960	1:10 000	03-08	H-8131	1964	1:20 000	02-08
H-7680	1960	1:10 000	03-08	H-8132	1964	1:20 000	02-08
H-7681	1961	1:80 000	10-30	H-8133	1964	1:20 000	02-08
H-7682	1961	1:80 000	10-30	H-8134	1964	1:20 000	02-08
H-7683	1961	1:80 000	10-30	H-8135	1964	1:20 000	02-08
H-7684	1961	1:80 000	10-30	H-8136	1964	1:20 000	02-08
H-7685	1961	1:80 000	10-30	H-8137	1964	1:20 000	02-08
H-7686	1961	1:80 000	10-30	H-8138	1964	1:20 000	02-07
H-7687	1961	1:80 000	10-30	H-8139	1964	1:20 000	02-07
H-7688	1961	1:80 000	10-30	H-8140	1964	1:20 000	02-07
H-7689	1961	1:80 000	10-30	H-8141	1964	1:20 000	02-07
H-7690	1961	1:80 000	10-30	H-8142	1964	1:20 000	02-07
H-7691	1961	1:80 000	10-30	H-8143	1964	1:20 000	02-07
H-7692	1961	1:80 000	10-30	H-8144	1964	1:20 000	02-07
H-7693	1961	1:80 000	10-30	H-8145	1964	1:20 000	02-07
H-7694	1961	1:80 000	10-30	H-8146	1964	1:20 000	02-07
H-7695	1961	1:80 000	10-30	H-8147	1964	1:20 000	02-07
H-7696	1961	1:80 000	10-30	H-8148	1964	1:20 000	02-07
H-7697	1961	1:80 000	10-30	H-8149	1964	1:20 000	02-07
H-7698	1961	1:80 000	10-30	H-8150	1964	1:20 000	02-07
H-7699	1961	1:80 000	10-30	H-8151	1964	1:20 000	02-07
H-7700	1961	1:80 000	10-30	H-8152	1964	1:20 000	02-07
H-7701	1961	1:80 000	10-30	H-8153	1964	1:20 000	02-07
H-7702	1961	1:80 000	10-30	H-8154	1964	1:20 000	02-07
H-7703	1961	1:80 000	10-30	H-8155	1964	1:20 000	02-07
H-7704	1961	1:80 000	10-30	H-8156	1964	1:20 000	02-07
H-7705	1961	1:80 000	10-30	H-8157	1964	1:20 000	02-07
H-7706	1961	1:80 000	10-30	H-8158	1964	1:20 000	02-07
H-7707	1961	1:80 000	10-30	H-8159	1964	1:20 000	02-07
H-7708	1961	1:80 000	10-30	H-8160	1964	1:20 000	02-07
H-7709	1961	1:80 000	10-30	H-8161	1964	1:20 000	02-07
H-7710	1961	1:80 000	10-30	H-8162	1964	1:20 000	02-07
H-7711	1961	1:80 000	10-30	H-8163	1964	1:20 000	02-07
H-7712	1961	1:80 000	10-30	H-8164	1964	1:20 000	02-07
H-7713	1961	1:80 000	10-30	H-8165	1964	1:20 000	02-07
H-7714	1961	1:80 000	10-30	H-8166	1964	1:20 000	02-07
H-7715	1961	1:80 000	10-30	H-8167	1964	1:20 000	02-07
H-7716	1961	1:80 000	10-30	H-8168	1964	1:20 000	02-07
H-7717	1961	1:80 000	10-30	H-8169	1964	1:20 000	02-07
H-7718	1961	1:80 000	10-30	H-8170	1964	1:20 000	02-07
H-7719	1961	1:80 000	10-30	H-8171	1964	1:20 000	02-07
H-7720	1961	1:80 000	10-30	H-8172	1964	1:20 000	02-07
H-7721	1961	1:80 000	10-30	H-8173	1964	1:20 000	02-07
H-7722	1961	1:80 000	10-30	H-8174	1964	1:20 000	02-07
H-7723	1961	1:80 000	10-30	H-8175	1964	1:20 000	02-07
H-7724	1961	1:80 000	10-30	H-8176	1964	1:20 000	02-07
H-7725	1961	1:80 000	10-30	H-8177	1964	1:20 000	02-07
H-7726	1961	1:80 000	10-30	H-8178	1964	1:20 000	02-07
H-7727	1961	1:80 000	10-30	H-8179	1964	1:20 000	02-07
H-7728	1961	1:80 000	10-30	H-8180	1964	1:20 000	02-07
H-7729	1961	1:80 000	10-30	H-8181	1964	1:20 000	02-07
H-7730	1961	1:80 000	10-30	H-8182	1964	1:20 000	02-07
H-7731	1961	1:80 000	10-30	H-8183	1964	1:20 000	02-07
H-7732	1961	1:80 000	10-30	H-8184	1964	1:20 000	02-07
H-7733	1961	1:80 000	10-30	H-8185	1964	1:20 000	02-07
H-7734	1961	1:80 000	10-30	H-8186	1964	1:20 000	02-07
H-7735	1961	1:80 000	10-30	H-8187	1964	1:20 000	02-07
H-7736	1961	1:80 000	10-30	H-8188	1964	1:20 000	02-07
H-7737	1961	1:80 000	10-30	H-8189	1964	1:20 000	02-07
H-7738	1961	1:80 000	10-30	H-8190	1964	1:20 000	02-07
H-7739	1961	1:80 000	10-30	H-8191	1964	1:20 000	02-07
H-7740	1961	1:80 000	10-30	H-8192	1964	1:20 000	02-07
H-7741	1961	1:80 000	10-30	H-8193	1964	1:20 000	02-07
H-7742	1961	1:80 000	10-30	H-8194	1964	1:20 000	02-07
H-7743	1961	1:80 000	10-30	H-8195	1964	1:20 000	02-07
H-7744	1961	1:80 000	10-30	H-8196	1964	1:20 000	02-07
H-7745	1961	1:80 000	10-30	H-8197	1964	1:20 000	02-07
H-7746	1961	1:80 000	10-30	H-8198	1964	1:20 000	02-07
H-7747	1961	1:80 000	10-30	H-8199	1964	1:20 000	02-07
H-7748	1961	1:80 000	10-30	H-8200	1964	1:20 000	02-07
H-7749	1961	1:80 000	10-30	H-8201	1964	1:20 000	02-07
H-7750	1961	1:80 000	10-30	H-8202	1964	1:20 000	02-07
H-7751	1961	1:80 000	10-30	H-8203	1964	1:20 000	02-07
H-7752	1961	1:80 000	10-30	H-8204	1964	1:20 000	02-07
H-7753	1961	1:80 000	10-30	H-8205	1964	1:20 000	02-07
H-7754	1961	1:80 000	10-30	H-8206	1964	1:20 000	02-07
H-7755	1961	1:80 000	10-30	H-8207	1964	1:20 000	02-07
H-7756	1961	1:80 000	10-30	H-8208	1964	1:20 000	02-07
H-7757	1961	1:80 000	10-30	H-8209	1964	1:20 000	02-07
H-7758	1961	1:80 000	10-30	H-8210	1964	1:20 000	02-07
H-7759	1961	1:80 000	10-30	H-8211	1964	1:20 000	02-07
H-7760	1961	1:80 000	10-30	H-8212	1964	1:20 000	02-07
H-7761	1961	1:80 000	10-30	H-8213	1964	1:20 000	02-07
H-7762	1961	1:80 000	10-30	H-8214	1964	1:20 000	02-07
H-7763	1961	1:80 000	10-30	H-8215	1964	1:20 000	02-07
H-7764	1961	1:80 000	10-30	H-8216	1964	1:20 000	02-07
H-7765	1961	1:80 000	10-30	H-8217	1964	1:20 000	02-07
H-7766	1961	1:80 000	10-30	H-8218	1964	1:20 000	02-07
H-7767	1961	1:80 000	10-30	H-8219	1964	1:20 000	02-07
H-7768	1961	1:80 000	10-30	H-8220	1964	1:20 000	02-07
H-7769	1961	1:80 000	10-30	H-8221	1964	1:20 000	02-07
H-7770	1961	1:80 000	10-30	H-8222	1964	1:20 000	02-07
H-7771	1961	1:80 000	10-30	H-8223	1964	1:20 000	02-07
H-7772	1961	1:80 000	10-30	H-8224	1964	1:20 000	02-07
H-7773	1961	1:80 000	10-30	H-8225	1964	1:20 000	02-07
H-7774	1961	1:80 000	10-30	H-8226	1964	1:20 000	02-07
H-7775	1961	1:80 000	10-30	H-8227	1964	1:20 000	02-07
H-7776	1961	1:80 000	10-30	H-8228	1964	1:20 000	02-07
H-7777	1961	1:80 000	10-30	H-8229	1964	1:20 000	02-07
H-7778	1961	1:80 000	10-30	H-8230	1964	1:20 000	02-07
H-7779	1961	1:80 000	10-30	H-8231	1964	1:20 000	02-07
H-7780	1961	1:80 000	10-30	H-8232	1964	1:20 000	02-07
H-7781	1961	1:80 000	10-30	H-8233	1964	1:20 000	02-07
H-7782	1961	1:80 000	10-30	H-8234	1964	1:20 000	02-07
H-7783	1961	1:80 000	10-30	H-8235	1964	1:20 000	02-07
H-7784	1961	1:80 000	10-30	H-8236	1964	1:20 000	02-07
H-7785	1961	1:80 000	10-30	H-8237	1964	1:20 000	02-07
H-7786	1961	1:80 000	10-30	H-8238	1964	1:20 000	02-07
H-7787	1961	1:80 000	10-30	H-8239	1964	1:20 000	02-07
H-7788	1961	1:80 000	10-30	H-8240	1964	1:20 000	02-07
H-7789	1961	1:80 000	10-30	H-8241	1964	1:20 000	02-07
H-7790	1961	1:80 000	10-30	H-8242	1964	1:20 000	02-07
H-7791	1961	1:80 000	10-30	H-8243	1964	1:20 000	02-07
H-7792	1961	1:80 000	10-30	H-8244	1964	1:20 000	02-07
H-7793	1961	1:80 000	10-30	H-8245	1964	1:20 000	02-07
H-7794	1961	1:80 000	10-30	H-8246	1964	1:20 000	02-07
H-7795	1961	1:80 000	10-30	H-8247	1964	1:20 000	02-07
H-7796	1961	1:80 000	10-30	H-8248	1964	1:20 000	02-07
H-7797	1961	1:80 000	10-30	H-8249	1964	1:20 000	02-07
H-7798	1961	1:80 000	10-30	H-8250	1964	1:20 000	02-07
H-7799	1961	1:80 000	10-30	H-8251	1964	1:20 000	02-07
H-7800	1961	1:80 000	10-30	H-8252	1964	1:20 000	02-07
H-7801	1961	1:80 000	10-30	H-8253	1964	1:20 000	02-07
H-7802	1961	1:80 000	10-30	H-8254	1964	1:20 000	02-07
H-7803	1961	1:80 000	10-30	H-8255	1964	1:20 000	02-07
H-7804	1961	1:80 000	10-30	H-8256	1964	1:20 000	02-07
H-7805	1961	1:80 000	10-30	H-8257	1964	1:20 000	02-07
H-7806	1961	1:80 000	10-30	H-8258	1964	1:20 000	02-07
H-7807	1961	1:80 000	10-30	H-8259	1964	1:20 000	02-07
H-7808	1961	1:80 000	10-30	H-8260	1964	1:20 000	02-07
H-7809	1961	1:80 000	10-30	H-8261	1964	1:20 000	02-07
H-7810	1961	1:80 000	10-30	H-8262			