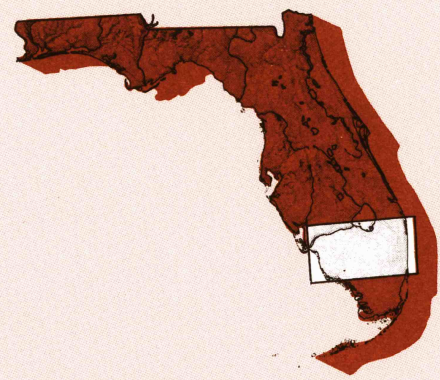


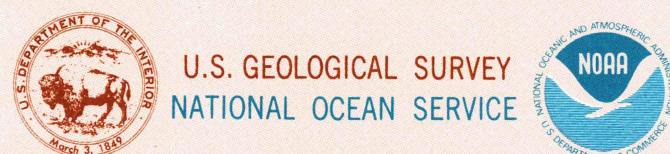
West Palm Beach FLORIDA

1:250 000-scale metric
topographic-bathymetric map



1 X 2 DEGREE QUADRANGLE
SHOWING

- Contours and elevations in meters
- Highways, roads and other manmade structures
- Water features
- Woodland areas
- Geographic names
- Bathymetric contours in meters



1987

Produced by the United States Geological Survey and the National Ocean Service
Compiled from 1:100 000-scale topographic maps dated 1981 and 1985
Planimetry revised from aerial photography taken 1984-86 and other sources
May edited 1986
Revised information not field checked. "Supersedes" map dated 1972

Bathymetry compiled by the National Ocean Service from tide-coordinated hydrographic surveys. This information is not intended for navigational purposes. Mean lower low water (dotted) line and mean high water (solid) line compiled by NOS from tide-coordinated aerial photographs
Offshore protection survey data, shown in red, furnished by the Minerals Management Service. Heavy lines indicate limits of Outer Continental Shelf Official Protection Diagram dated February 3, 1977. The protection on this map are not for Federal leasing purposes; for such purposes, refer to OCS Official Protection Diagram available from the Minerals Management Service
Projection and 10 000-meter grid zone 17; Universal Transverse Mercator 100 000-foot grid ticks based on Florida coordinate system, east and west zones, 1927 North American Datum. To place on the predicted North American Datum 1983, move the projection lines 36 meters south and 20 meters west

Location of geodetic control established by government agencies is shown on corresponding 1:250 000-scale Geodetic Control Diagram
There may be private subdivisions within the boundaries of the National or State reservations shown on this map

MEAN MAGNETIC DECLINATION FROM TRUE NORTH VARIES FROM 0° 36' MILES EAST OF THE CENTER OF THE WEST EDGE TO 2° 40' MILES EAST OF THE CENTER OF THE EAST EDGE. MEAN ANNUAL CHANGE IS 8.3 WESTERLY
CONTOUR INTERVAL: 5 METERS

NATIONAL GEODETIC VERTICAL DATUM OF 1929
ELEVATIONS SHOWN TO THE NEAREST METER
BATHYMETRIC CONTOUR INTERVAL: 10 METERS WITH SUPPLEMENTARY 2 METER CONTOURS TO 200 METER DEPTH; THENCE 50 METERS WITH SUPPLEMENTARY 10 METER CONTOURS TO MAXIMUM DEPTH-DATUM IS MEAN LOWER LOW WATER

THE RELATIONSHIP BETWEEN THE TWO DATUMS IS VARIABLE
SOUNDING DATUM FOR LAKE OKEECHOBEE IS 15 FEET ABOVE MEAN LOWER LOW WATER AT PUNTA RASSA
BASE MAP COMPLETES WITH NATIONAL MAP ACCURACY STANDARDS. BATHYMETRIC SURVEY DATA COMPLETES WITH INTERNATIONAL HYDROGRAPHIC ORGANIZATION (IHO) SPECIAL PUBLICATION 44 ACCURACY STANDARDS AND/OR STANDARDS USED AS OF THE DATE OF THE SURVEY

CONVERSION TABLE						ADJOINING MAPS			
Meters	Feet	Meters	Feet	Meters	Feet	1	2	3	
1	3.2808	1	3.048						
2	6.5617	2	6.096						
3	9.8425	3	9.144						
4	13.1234	4	12.802						
5	16.4042	5	15.240						
6	19.6850	6	18.288						
7	22.9659	7	21.336						
8	26.2467	8	24.384						
9	29.5276	9	27.432						
10	32.8084	10	30.480						

To convert meters to feet multiply by 3.2808
To convert feet to meters multiply by 0.3048

1 St. Petersburg
2 Ft. Pierce
3 Walker Cove
4 Charlotte Harbor
5 Bahamas
6 Pulley Ridge*
7 Miami
8 Miami*

ISBN 0-607-14504-8
9 780607 145045

Topographic Map Symbols

- Figures in red denote approximate distances in kilometers between markers
- Dual highway; interchange
 - Primary highway; hard surface
 - Secondary highway; hard surface
 - Light duty road; hard or improved surface
 - Other road; dirt
 - Route marker; Interstate; U. S. State
 - Bridge; overpass; underpass
 - Tunnel road; railroad
 - Railroad; standard gauge; single, multiple track
 - Railroad; narrow gauge; single, multiple track
 - Bulk-up area; locality; elevation
 - Airport; runway pattern known; unknown
 - National boundary
 - State boundary
 - County boundary
 - National or State reservation boundary
 - Land grant boundary
 - U. S. public lands survey; range, township (surveyed)
 - U. S. public lands survey; range, township (contracted)
 - Powerline; pipeline; aboveground; underground
 - Dam; landmark feature; landmark building
 - Well; water; other spring; tank
 - Cave; mine; quarry; oil platform
 - Landmark area; landmark seateack
 - Distorted surface; strip mine; lava; sand
 - Contours; index; intermediate; supplementary
 - Bathymetric contours; index; primary
 - Bathymetric contours; index; intermediate; supplementary
 - Stream, lake; perennial; intermittent
 - Rapids, large and small; falls, large and small
 - Land subject to controlled inundation; marsh, swamp
 - Woodland; orchard; vineyard

A pamphlet describing topographic maps is available on request

FOR SALE BY U.S. GEOLOGICAL SURVEY
DENVER, COLORADO 80225, OR RESTON, VIRGINIA 22092
AND NATIONAL OCEAN SERVICE, ROCKVILLE, MARYLAND 20852

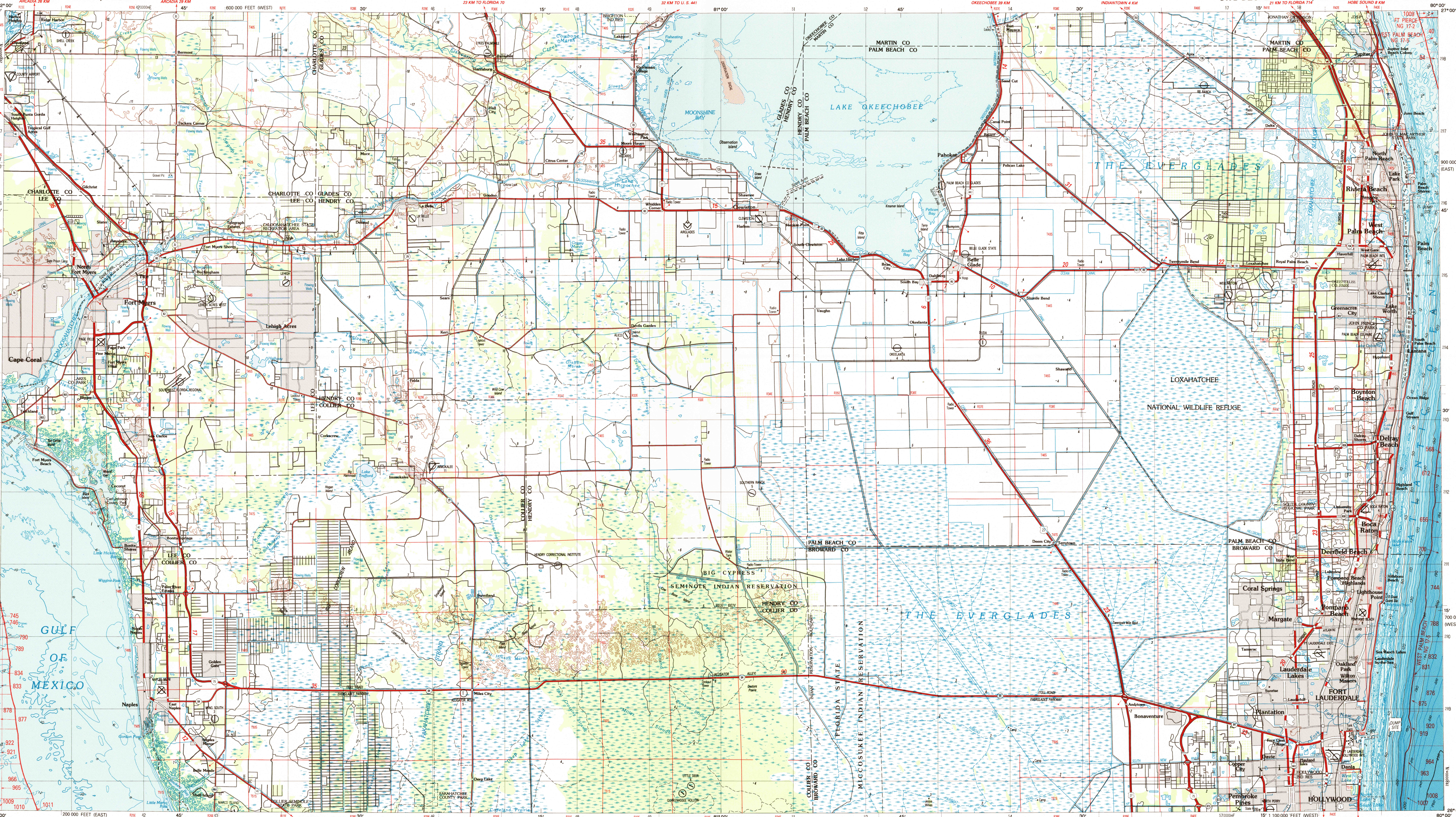
RECEIVED

JUN 30 2000

USGS NHD
HISTORICAL MAP ARCHIVES



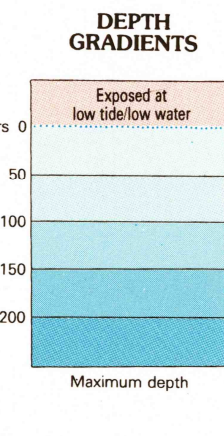
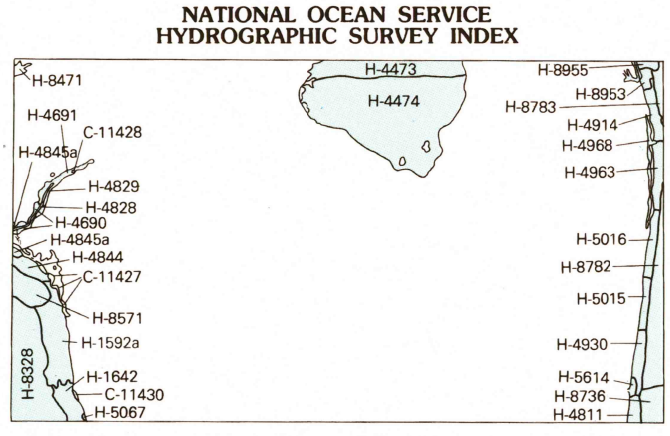
WEST PALM BEACH, FLORIDA



SCALE 1:250 000
1 CENTIMETER ON THE MAP REPRESENTS 2.5 KILOMETERS ON THE GROUND
CONTOUR INTERVAL 5 METERS

HYDROGRAPHIC SURVEY INFORMATION					
SURVEY NUMBER	SURVEY DATE	SURVEY SCALE	SURVEY LINE SPACING (NAUT. MILES)	SURVEY NUMBER	SURVEY DATE
H-1937a	1884	1:40,000	08-1.5	H-4989	1929
H-1942	1885	1:40,000	08-1.5	H-4991	1929
H-4473	1925	1:40,000	06-64	H-5016	1929
H-4474	1925	1:40,000	06-64	H-5017	1929
H-4690	1927-28	1:10,000	01-07	H-5018	1929
H-4691	1927	1:10,000	02-08	H-5019	1929
H-4692	1928	1:10,000	02-15	H-5020	1929
H-4693	1928-29	1:10,000	01-06	H-5021	1929
H-4694	1928	1:10,000	01-10	H-5022	1929
H-4695	1929	1:10,000	01-10	H-5023	1929
H-4696	1929	1:10,000	02-40	H-5024	1929
H-4697	1929	1:10,000	02-18	H-5025	1929
H-4698	1929	1:10,000	02-10	H-5026	1929

NOS CHART 11427 OCTOBER 3, 1981 1:40,000
NOS CHART 11428 SEPTEMBER 28, 1981 1:40,000
NOS CHART 11430 MAY 22, 1982 1:40,000



Photographic copies of the above and prior versions may be obtained at the cost of reproduction by addressing the Director, NODS, National Ocean Service, National Oceanic and Atmospheric Administration, Department of Commerce, Washington, D.C. 20541