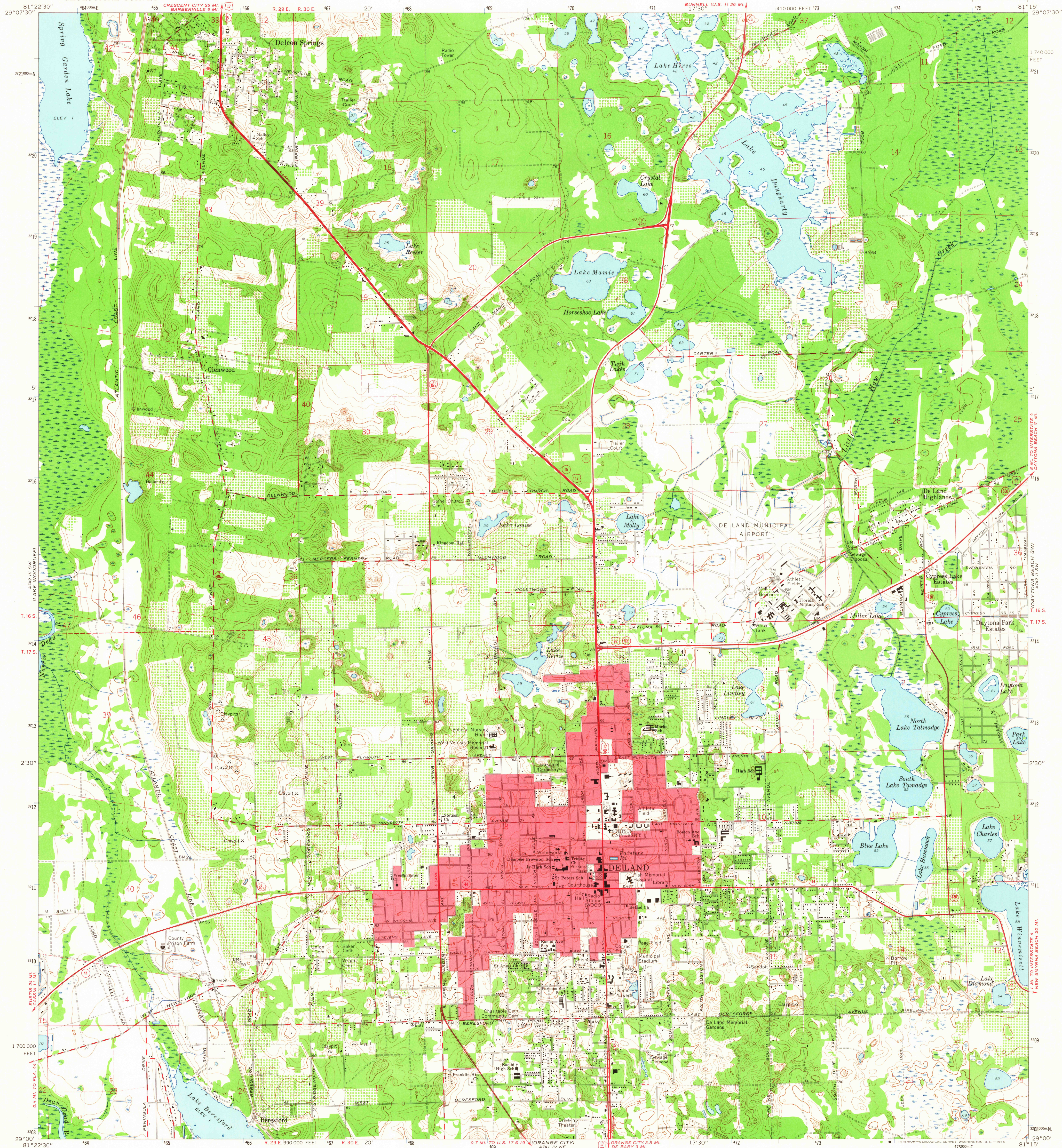


UNITED STATES
DEPARTMENT OF THE INTERIOR
GEOLOGICAL SURVEY

DE LAND QUADRANGLE
FLORIDA—VOLUSIA CO.
7.5 MINUTE SERIES (TOPOGRAPHIC)



Mapped, edited, and published by the Geological Survey
Control by USGS, USC&GS, and Florida Geodetic Survey
Planimetry by photogrammetric methods from aerial photographs
taken 1957. Topography by planimetric surveys 1962 and 1964
Selected hydrographic data compiled from USC&GS Chart 688 (1959)
This information is not intended for navigational purposes
Polyconic projection. 1927 North American datum
10,000-foot grid based on Florida coordinate system, east zone
1000-meter Universal Transverse Mercator grid ticks,
zone 17, shown in blue
Fine red dashed lines indicate selected fence and field lines where
generally visible on aerial photographs. This information is unchecked
Red tint indicates area in which only landmark buildings are shown

UTM GRID AND 1964 MAGNETIC NORTH
DECLINATION AT CENTER OF SHEET

SCALE 1:24,000
CONTOUR INTERVAL 5 FEET
DATUM IS MEAN SEA LEVEL
SOUNDINGS IN FEET—DATUM IS MEAN LOW WATER
SHORELINE SHOWN REPRESENTS THE APPROXIMATE LINE OF MEAN HIGH WATER
THE MEAN RANGE OF TIDE IS APPROXIMATELY 1 FOOT
THIS MAP COMPLIES WITH NATIONAL MAP ACCURACY STANDARDS
FOR SALE BY U.S. GEOLOGICAL SURVEY, WASHINGTON, D.C. 20242
A FOLDER DESCRIBING TOPOGRAPHIC MAPS AND SYMBOLS IS AVAILABLE ON REQUEST

USGS
Historical File
Topographic Division

ROAD CLASSIFICATION
Heavy-duty ———— Light-duty ————
Medium-duty ———— Unimproved dirt ————
U.S. Route ———— State Route ————

U.S.G.S.
FILE COPY
TOPOGRAPHIC DIVISION

DE LAND, FLA.
N2900—W8115/7.5
1964

AMS 4742 III SE—SERIES V847

AUG 26 1965
2665