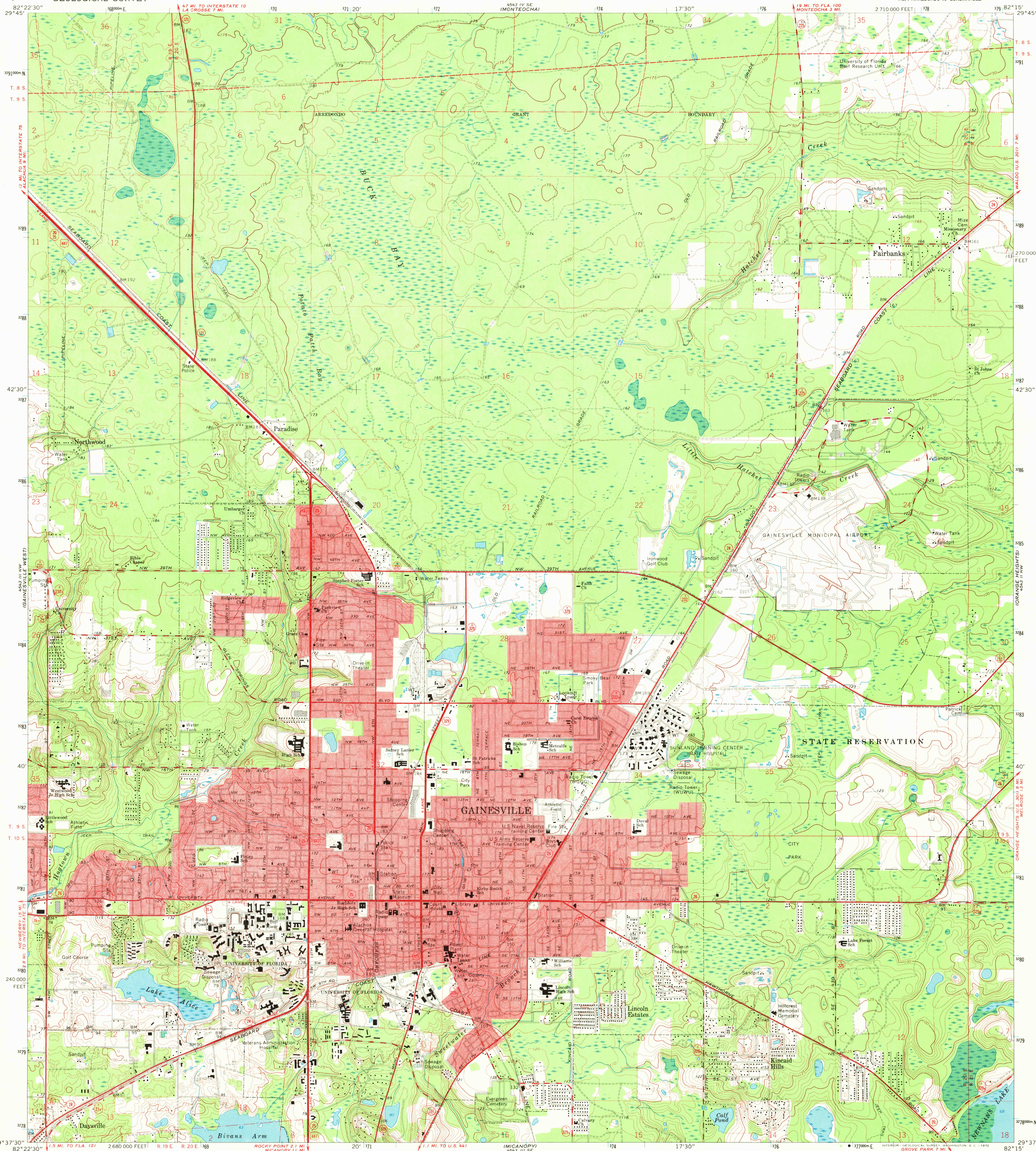
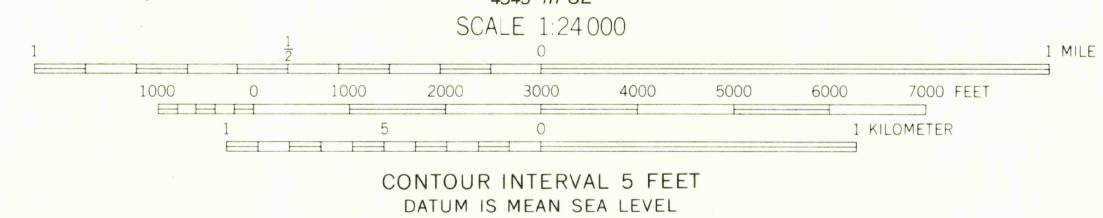
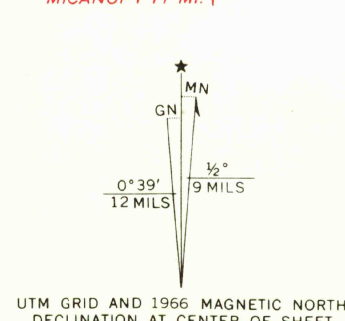


UNITED STATES
DEPARTMENT OF THE INTERIOR
GEOLOGICAL SURVEY

GAINESVILLE EAST QUADRANGLE
FLORIDA—ALACHUA CO.
7.5 MINUTE SERIES (TOPOGRAPHIC)
NE 1/4 ARREDONDO 15 QUADRANGLE



Mapped, edited, and published by the Geological Survey
Control by USGS, USC&GS, USCE, and Florida Geodetic Survey
Topography by photogrammetric methods from aerial
photographs taken 1964. Field checked 1966
Polyconic projection. 1927 North American datum
10,000-foot grid based on Florida coordinate system, north zone
1000-meter Universal Transverse Mercator grid ticks,
zone 17, shown in blue
Fine red dashed lines indicate selected fence and field lines where
generally visible on aerial photographs. This information is unchecked
Red tint indicates areas in which only landmark buildings are shown
Dotted land lines established by private survey



ROAD CLASSIFICATION
Heavy-duty ——— Light-duty ———
Medium-duty ——— Unimproved dirt ———
U. S. Route —○— State Route —○—

GAINESVILLE EAST, FLA.
NE 1/4 ARREDONDO 15 QUADRANGLE
N2937.5—W8215.7.5
1966
AMS 4543 III NE—SERIES V847

FEB 14 1972
8350
USGS
HISTORICAL FILE
TOPOGRAPHIC DIVISION