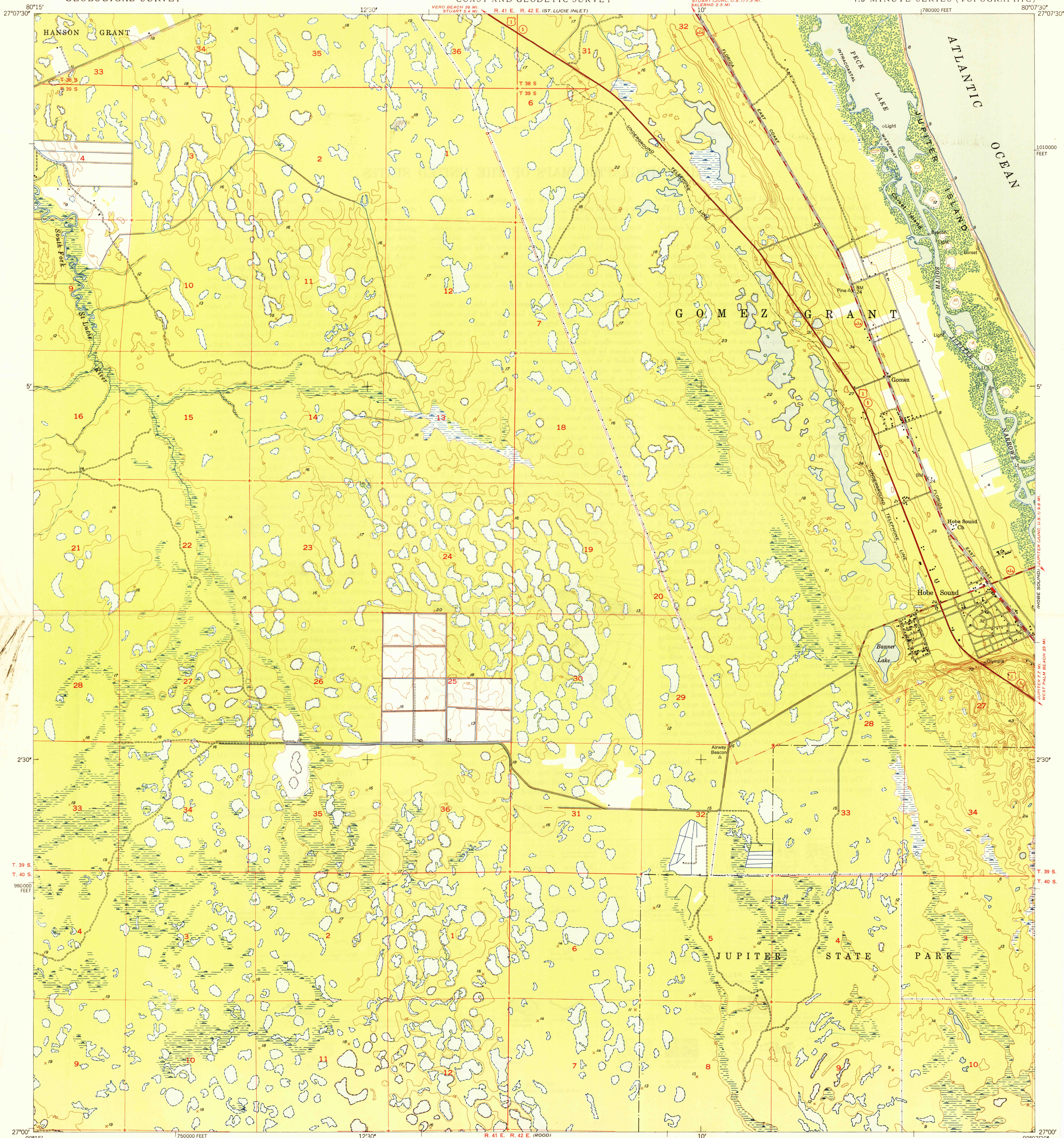


PALM CITY

UNITED STATES  
DEPARTMENT OF THE INTERIOR  
GEOLOGICAL SURVEY

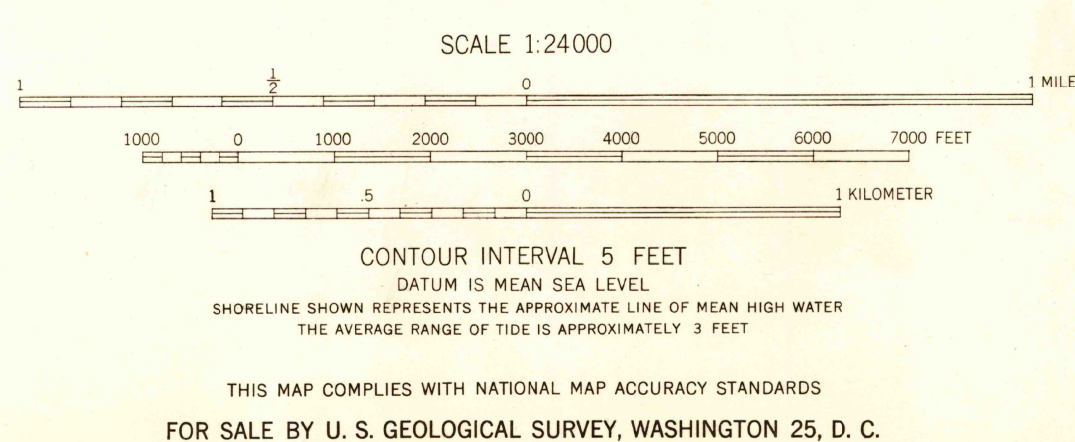
UNITED STATES  
DEPARTMENT OF COMMERCE  
COAST AND GEODETIC SURVEY

GOMEZ QUADRANGLE  
FLORIDA-MARTIN CO.  
7.5 MINUTE SERIES (TOPOGRAPHIC)



Mapped by U. S. Coast & Geodetic Survey  
Edited and published by the Geological Survey  
Control by USC&GS  
Culture and drainage in part compiled from  
aerial photographs taken 1942, 1945 and 1946  
Topography by plane-table methods 1948  
Polyconic projection, 1927 North American datum,  
10,000-foot grid based on Florida coordinate system,  
east zone  
No distinction is made between dwellings, barns,  
commercial and industrial buildings

TRUE NORTH  
MAGNETIC NORTH  
APPROXIMATE MEAN  
DECLINATION, 1948



USGS  
Historical File  
Topographic Division  
Woods Brushwood  
Cleared

ROAD CLASSIFICATION  
HARD-SURFACE ALL WEATHER ROADS  
Heavy-duty 4 LANE 12 LANE  
Medium-duty 4 LANE 12 LANE  
Loose-surface, graded, or narrow hard-surface  
U. S. Route  
State Route  
DRY WEATHER ROADS  
Improved dirt  
Unimproved dirt

GOMEZ, FLA.  
N2700-W8007.5/7.5  
EDITION OF 1949