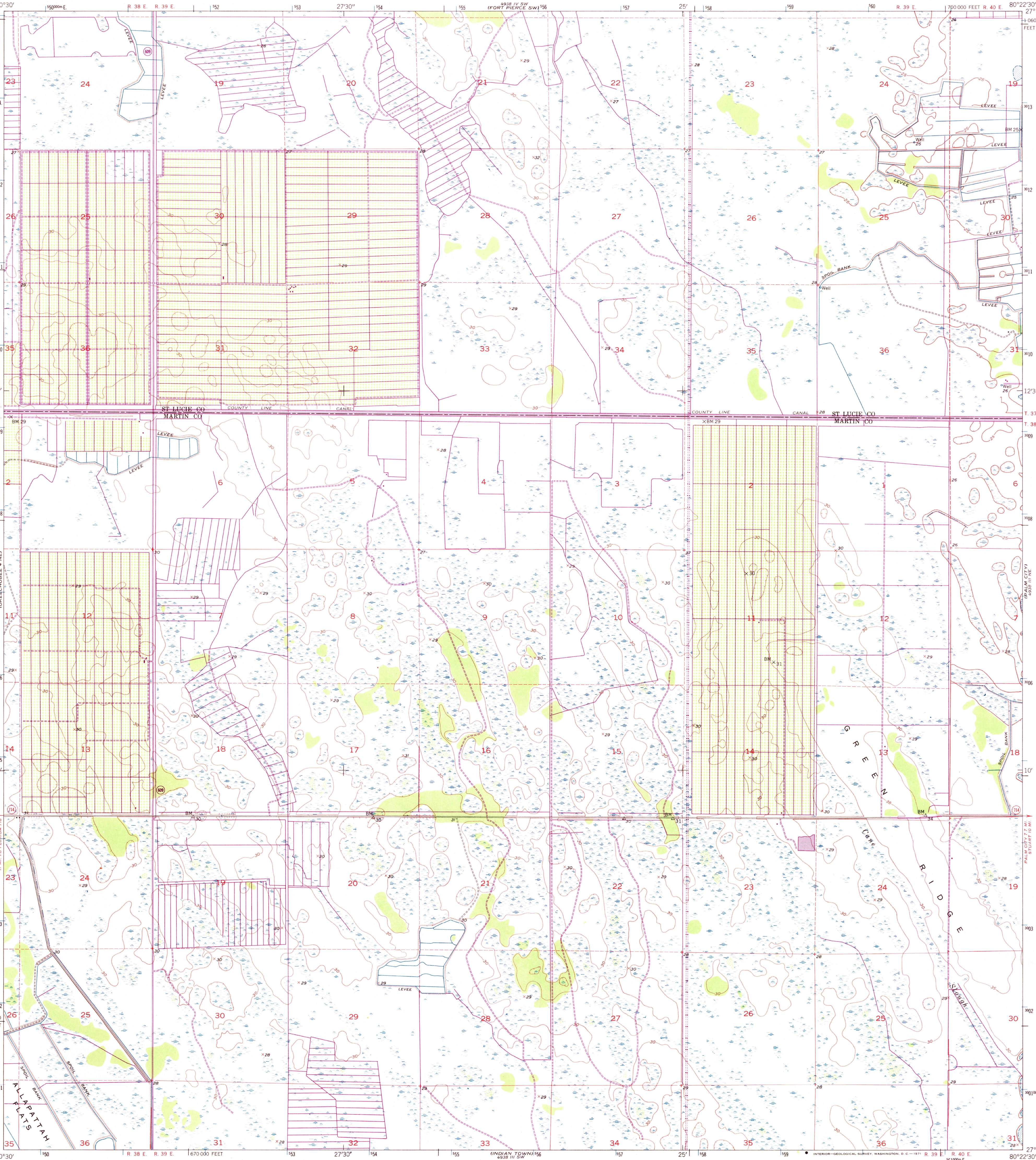
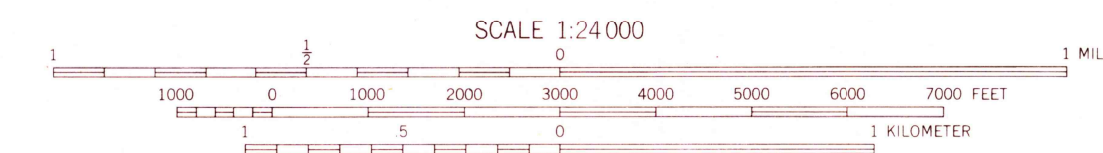
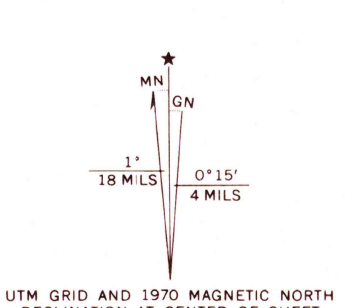


UNITED STATES  
DEPARTMENT OF THE INTERIOR  
GEOLOGICAL SURVEY

INDIAN TOWN NW QUADRANGLE  
FLORIDA  
7.5 MINUTE SERIES (TOPOGRAPHIC)



Mapped, edited, and published by the Geological Survey  
Control by USGS and USC&GS  
Culture and drainage in part compiled from aerial photographs  
taken 1952. Topography by plane-table surveys 1953  
Polyconic projection. 1927 North American datum  
10,000-foot grid based on Florida coordinate system,  
east zone  
Dashed land lines indicate approximate locations  
1000-meter Universal Transverse Mercator grid ticks,  
zone 17, shown in blue  
Revisions shown in purple and recompilation of woodland areas  
compiled from aerial photographs taken 1970  
This information not field checked



CONTOUR INTERVAL 5 FEET  
DATUM IS MEAN SEA LEVEL

THIS MAP COMPLIES WITH NATIONAL MAP ACCURACY STANDARDS  
FOR SALE BY U. S. GEOLOGICAL SURVEY, WASHINGTON, D. C. 20242  
A FOLDER DESCRIBING TOPOGRAPHIC MAPS AND SYMBOLS IS AVAILABLE ON REQUEST



ROAD CLASSIFICATION	
Heavy-duty	4 LANE 16 LANE
Medium-duty	4 LANE 16 LANE
Unimproved dirt	=====
U. S. Route	○
State Route	○

INDIAN TOWN NW, FLA.  
N 2707.5-W 8022.5/7.5

1953  
PHOTO REVISSED 1970  
AMS 4938 III NW-SERIES V847

USGS  
HISTORICAL FILE  
TOPOGRAPHIC DIVISION  
AUG 10 1971