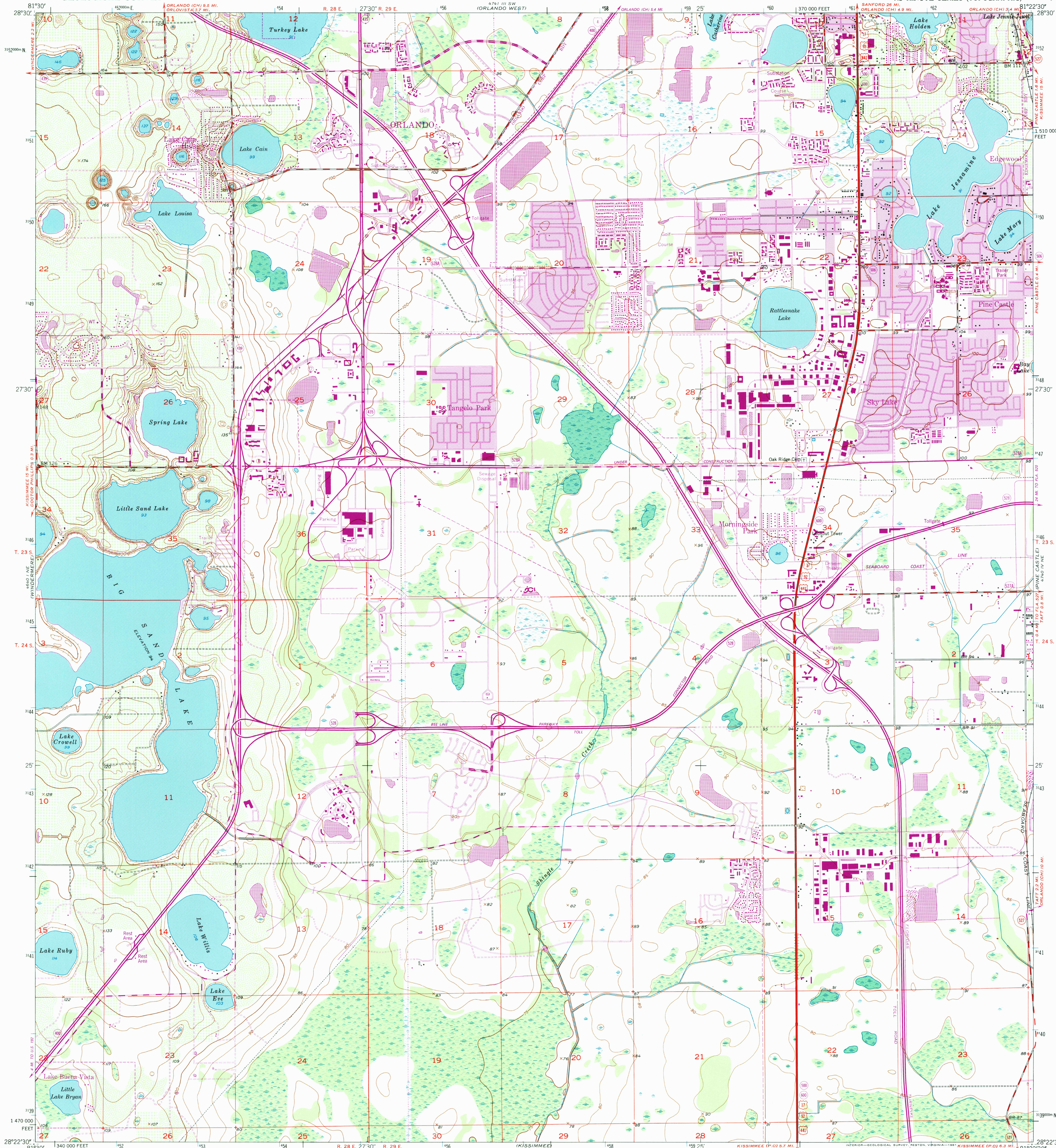
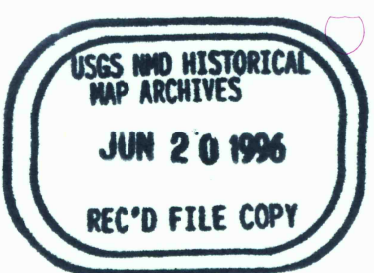
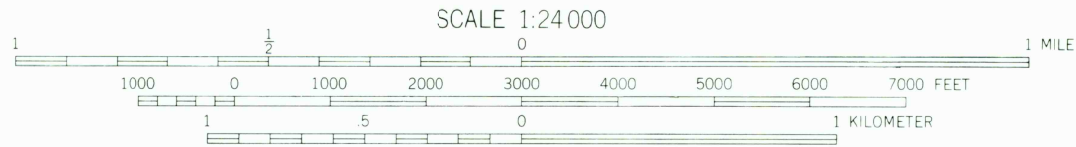
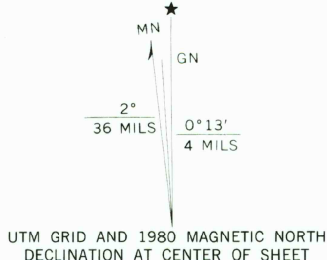


UNITED STATES
DEPARTMENT OF THE INTERIOR
GEOLOGICAL SURVEY

LAKE JESSAMINE QUADRANGLE
FLORIDA—ORANGE CO.
7.5 MINUTE SERIES (TOPOGRAPHIC)



Mapped, edited, and published by the Geological Survey
Control by USGS, USC&GS, and USCE
Culture and drainage in part compiled by U. S. Corps of Engineers
from aerial photographs taken 1950. Topography by plane-table
surveys 1953
Polyconic projection
10,000-foot grid based on Florida coordinate system, east zone
1000-meter Universal Transverse Mercator grid ticks,
zone 17, shown in blue. 1927 North American Datum
To place on the predicted North American Datum 1983
move the projection lines 28 meters south and
19 meters west as shown by dashed corner ticks
Revisions shown in purple compiled from aerial photographs
taken 1977 and other source data. This information not
field checked. Map edited 1980
Purple tint indicates extension of urban areas



ROAD CLASSIFICATION			
Heavy-duty	Light-duty	Unimproved dirt	State Route
Medium-duty	Unimproved dirt	State Route	State Route
Interstate Route	U. S. Route	State Route	State Route

LAKE JESSAMINE, FLA.
N2822.5—W8122.5/7.5

1953
PHOTOREVISED 1980
DMA 4740 IV NW—SERIES V847

THIS MAP COMPLIES WITH NATIONAL MAP ACCURACY STANDARDS
FOR SALE BY U. S. GEOLOGICAL SURVEY, RESTON, VIRGINIA 22092
A FOLDER DESCRIBING TOPOGRAPHIC MAPS AND SYMBOLS IS AVAILABLE ON REQUEST

