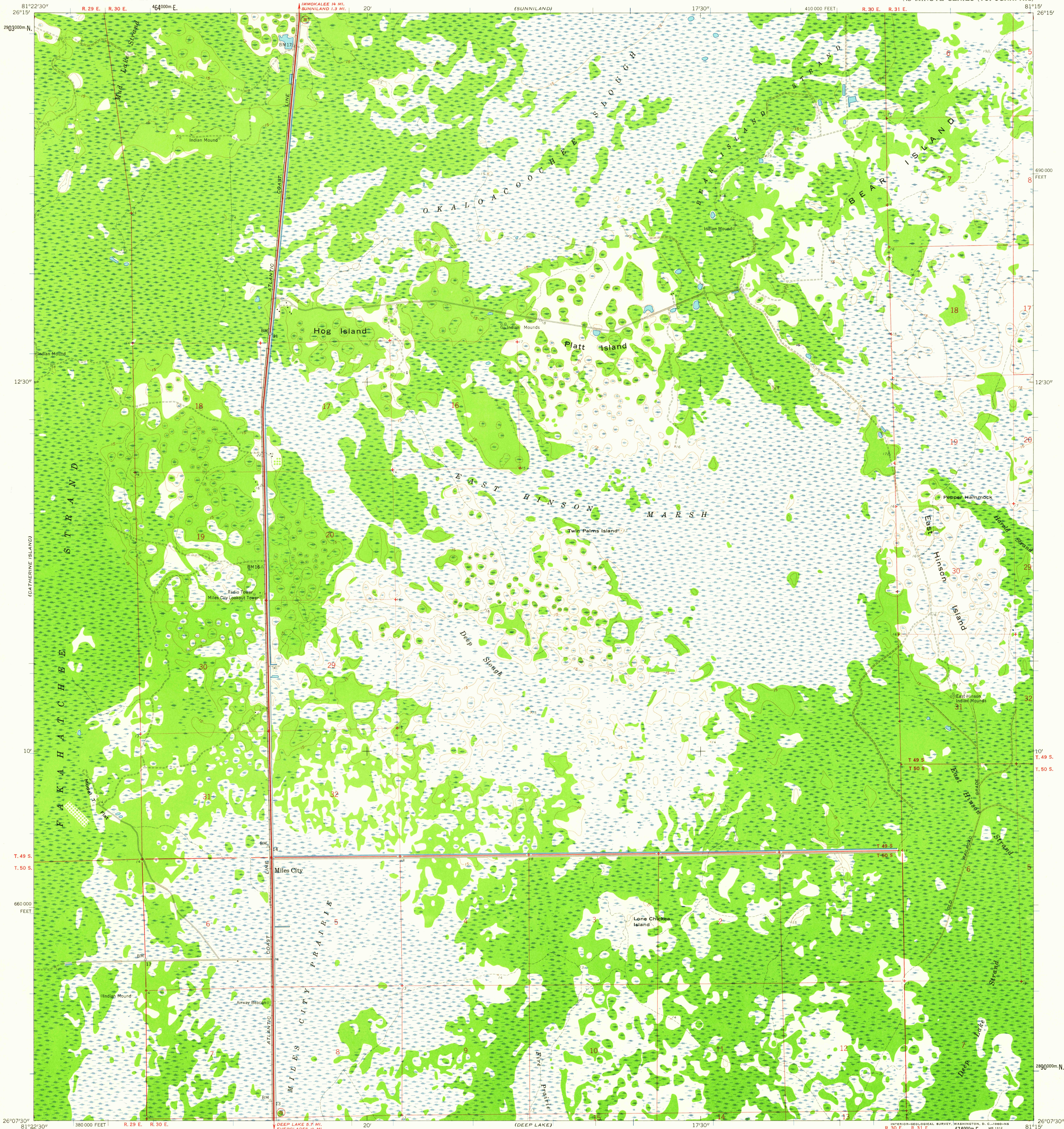


IMMOKALEE SW  
DEEP LAKE SW

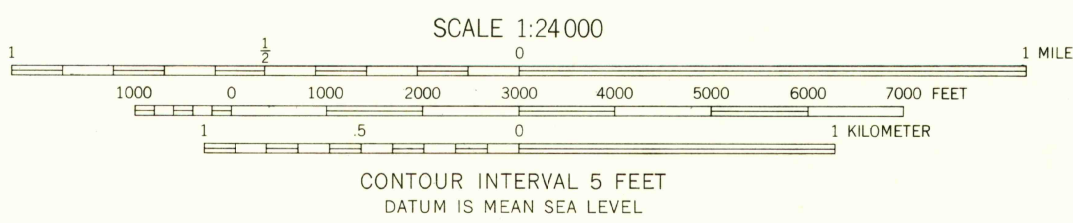
UNITED STATES  
DEPARTMENT OF THE INTERIOR  
GEOLOGICAL SURVEY

MILES CITY QUADRANGLE  
FLORIDA-COLLIER CO.  
7.5 MINUTE SERIES (TOPOGRAPHIC)



Mapped, edited, and published by the Geological Survey  
Control by USGS and USC&GS  
Culture and drainage in part compiled from aerial photographs  
taken 1952-1953. Topography by planetable surveys 1959  
Polyconic projection. 1927 North American datum  
10,000-foot grid based on Florida coordinate system, east zone  
1000-meter Universal Transverse Mercator grid ticks,  
zone 17, shown in blue  
Certain land lines unsurveyed in T. 49 S.-R. 30 E.,  
and T. 50 S.-R. 31 E.  
Land lines unsurveyed in T. 49 S.-R. 29 E., and T. 50 S.-R. 29 E.  
Dotted land lines established by private survey

TRUE NORTH  
MAGNETIC NORTH  
APPROXIMATE MEAN  
DECLINATION, 1959



THIS MAP COMPLIES WITH NATIONAL MAP ACCURACY STANDARDS  
FOR SALE BY U. S. GEOLOGICAL SURVEY, WASHINGTON 25, D. C.  
A FOLDER DESCRIBING TOPOGRAPHIC MAPS AND SYMBOLS IS AVAILABLE ON REQUEST

USGS  
Historical File  
Topographic Division  
QUADRANGLE LOCATION  
FLORIDA

ROAD CLASSIFICATION  
Heavy-duty ——— Light-duty ———  
Unimproved dirt - - - - -  
○ State Route

U.S.G.S  
FILE COPY  
TOPOGRAPHIC DIVISION

MILES CITY, FLA.  
N 2607.5-W 8115/7.5  
1959

JAN 12 1960  
JAN 12 1960  
1915