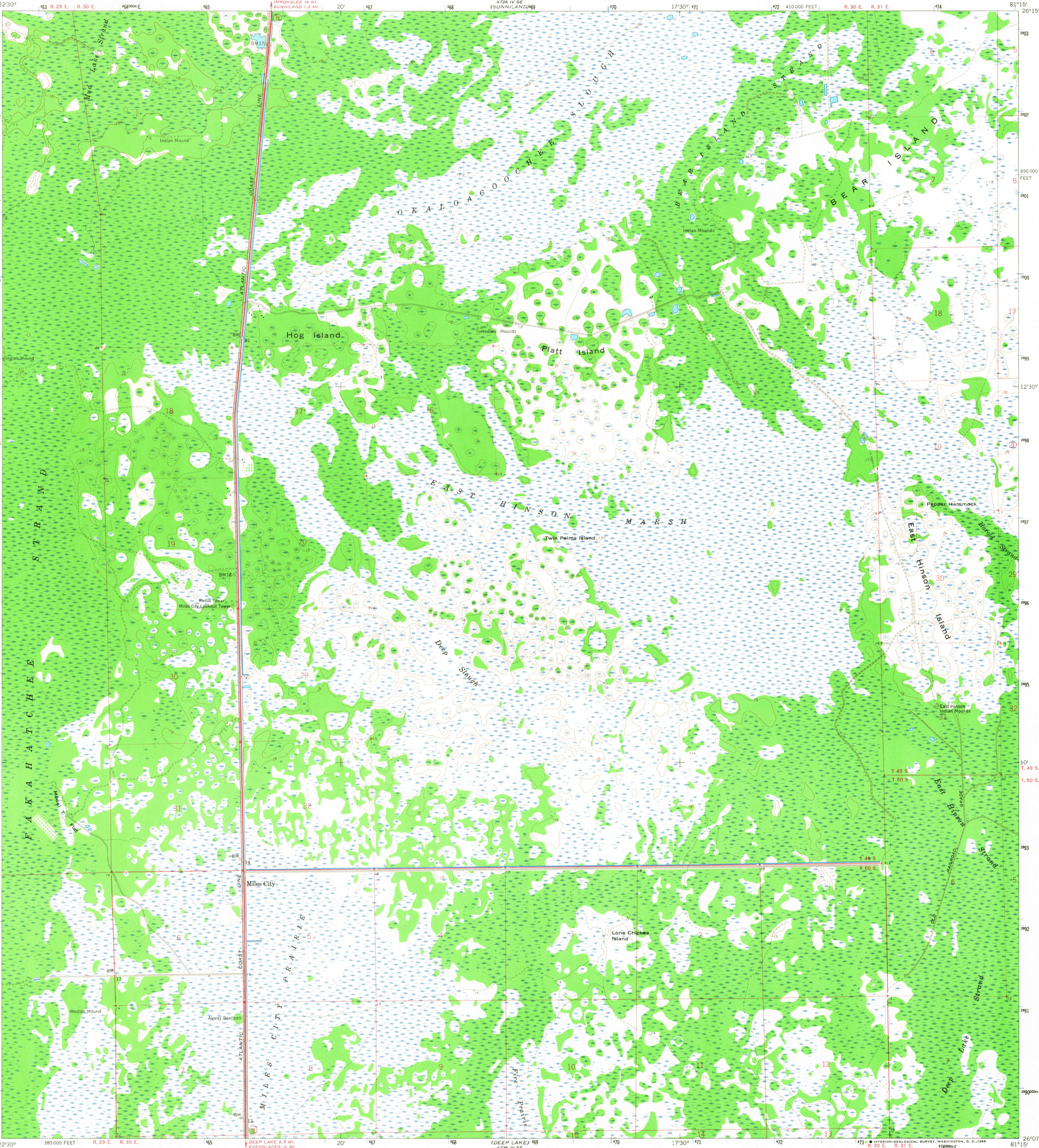
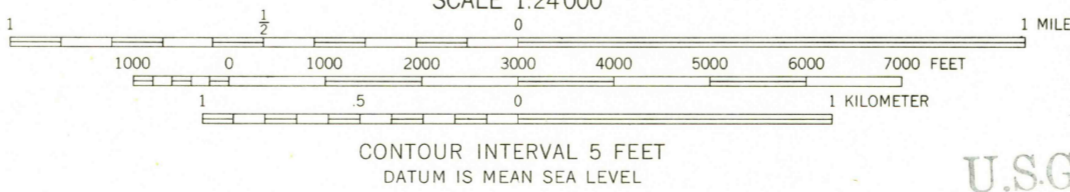
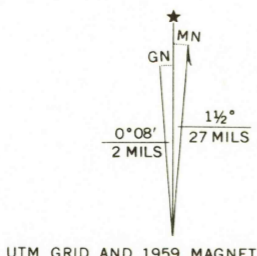


UNITED STATES  
DEPARTMENT OF THE INTERIOR  
GEOLOGICAL SURVEY

MILES CITY QUADRANGLE  
FLORIDA—COLLIER CO.  
7.5 MINUTE SERIES (TOPOGRAPHIC)



Maped, edited, and published by the Geological Survey  
Control by USGS and USC&GS  
Culture and drainage in part compiled from aerial photographs  
taken 1952-1953. Topography by planetable surveys 1959  
Polyconic projection. 1927 North American datum  
10,000-foot grid based on Florida coordinate system, east zone  
1000-meter Universal Transverse Mercator grid ticks,  
zone 17, shown in blue  
Certain land lines unsurveyed in T. 49 S.-R. 30 E.,  
and T. 50 S.-R. 31 E.  
Land lines unsurveyed in T. 49 S.-R. 29 E., and T. 50 S.-R. 29 E.  
Dotted land lines established by private survey



U.S.G.S.  
FILE COPY  
TOPOGRAPHIC DIVISION



ROAD CLASSIFICATION  
Heavy-duty ——— Light-duty ———  
Unimproved dirt =====  
○ State Route

MILES CITY, FLA.  
N 2607.5-W 8115/7.5

1959  
AMS 4736 III NE—SERIES V847

THIS MAP COMPLIES WITH NATIONAL MAP ACCURACY STANDARDS  
FOR SALE BY U. S. GEOLOGICAL SURVEY, WASHINGTON, D. C. 20242  
A FOLDER DESCRIBING TOPOGRAPHIC MAPS AND SYMBOLS IS AVAILABLE ON REQUEST

2860  
APR 16 1968