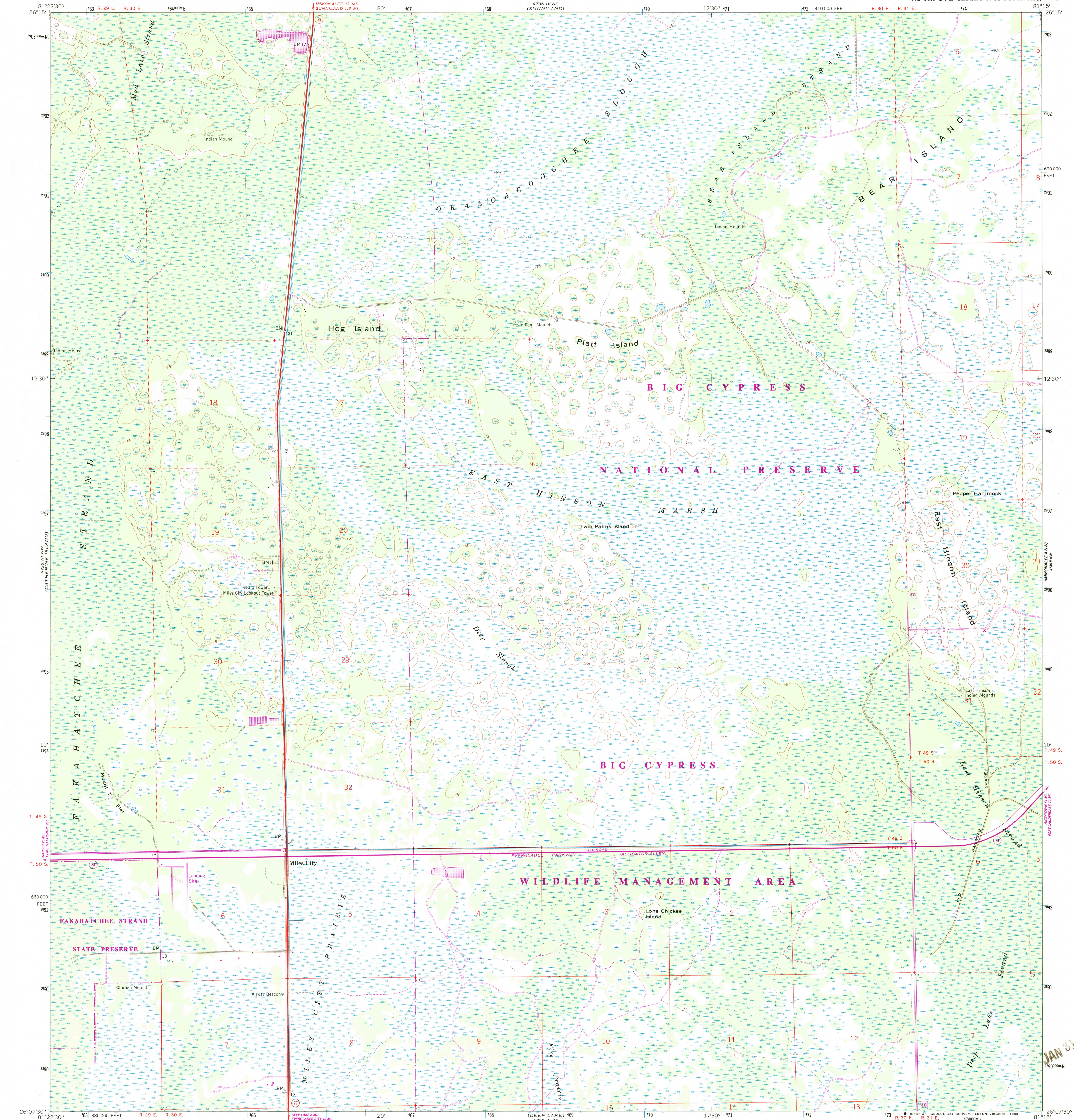


(IMMOKALEE 1/4 SW
4736 III SW
4736 III SW)

UNITED STATES
DEPARTMENT OF THE INTERIOR
GEOLOGICAL SURVEY

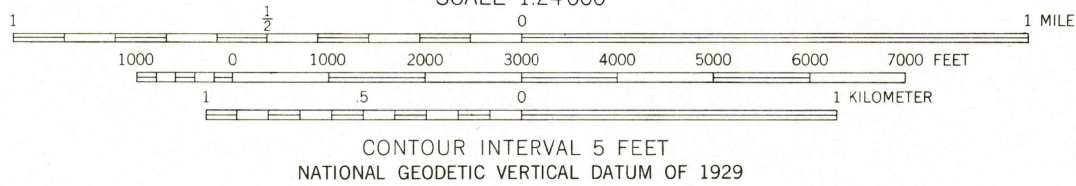
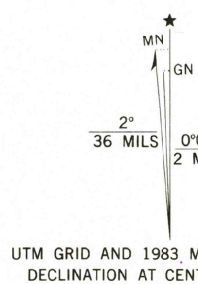
MILES CITY QUADRANGLE
FLORIDA—COLLIER CO.
7.5 MINUTE SERIES (TOPOGRAPHIC)

(IMMOKALEE 1 SW
4736 III SW
4736 III SW)



(DEEP LAKE 1/4 SW
4736 III SW
4736 III SW)

Mapped, edited, and published by the Geological Survey
Control by USGS and NOS/NOAA
Planimetry in part by photogrammetric methods
from aerial photographs taken 1952-1953
Topography by planetable surveys 1959
Polyconic projection. 10,000-foot grid ticks based on
Florida coordinate system, east zone
1000-meter Universal Transverse Mercator grid ticks,
zone 17, shown in blue. 1927 North American Datum
To place on the predicted North American Datum
1983 move the projection lines 38 meters south
and 19 meters west as shown by dashed corner ticks
Certain land lines unsurveyed in T. 49 S., R. 30 E.,
and T. 50 S., R. 31 E.
Land lines unsurveyed in T. 49 S., R. 29 E., and T. 50 S., R. 29 E.
Dotted land lines established by private survey
There may be private inholdings within the boundaries of
the National or State reservations shown on this map



ROAD CLASSIFICATION	
Primary highway, hard surface	Light-duty road, hard or improved surface
Secondary highway, hard surface	Unimproved road
Interstate Route	U. S. Route
	State Route
	County Route

MILES CITY, FLA.
26081-B3-TF-024

1959
PHOTOREVISED 1983
DMA 4736 III NE—SERIES V847

THIS MAP COMPLIES WITH NATIONAL MAP ACCURACY STANDARDS
FOR SALE BY U. S. GEOLOGICAL SURVEY, RESTON, VIRGINIA 22092
A FOLDER DESCRIBING TOPOGRAPHIC MAPS AND SYMBOLS IS AVAILABLE ON REQUEST

Revisions shown in purple and woodland compiled in
cooperation with State of Florida agencies from aerial
photographs taken 1980 and other sources. This
information not field checked. Map edited 1983

JAN 31 1984