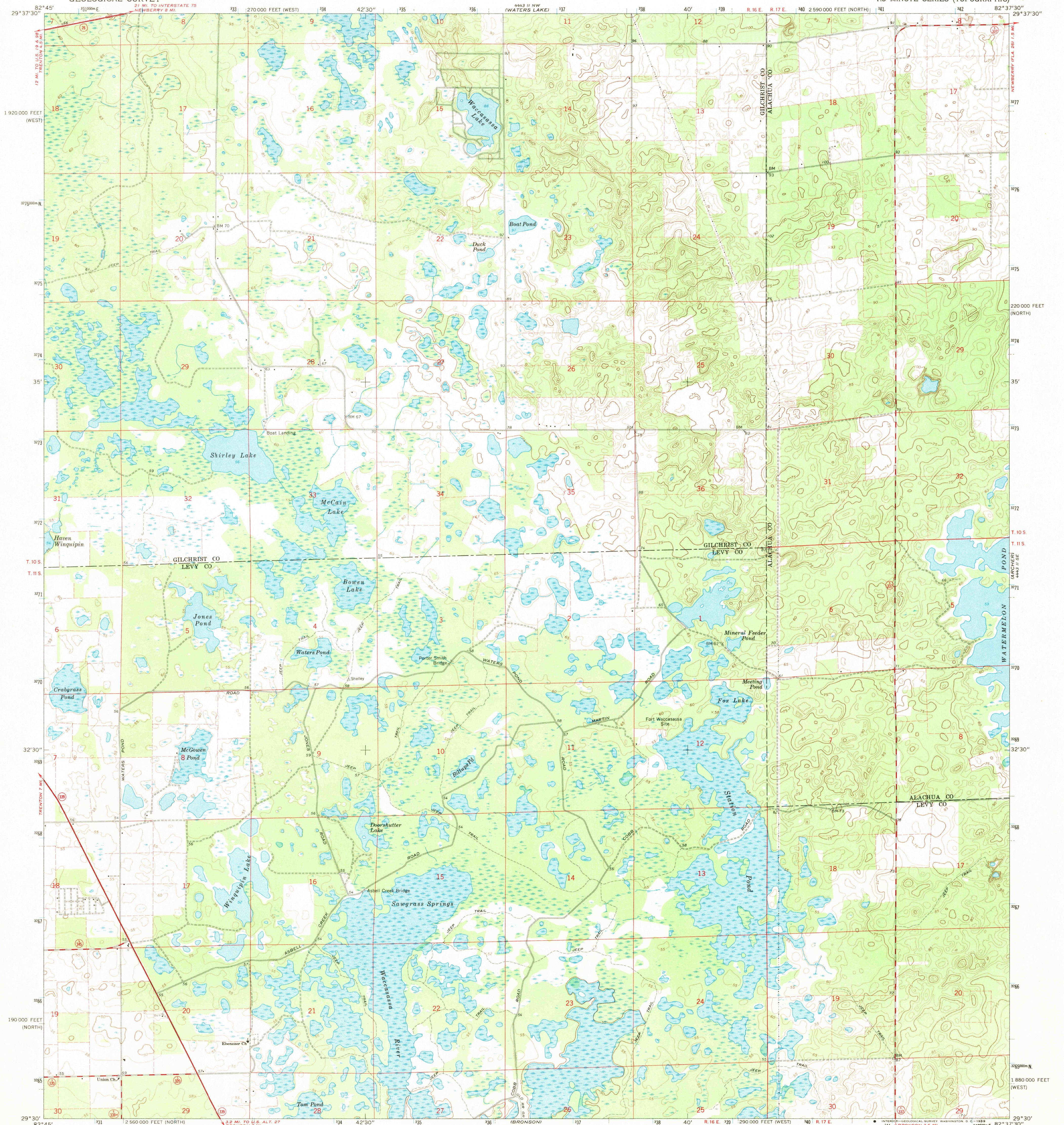
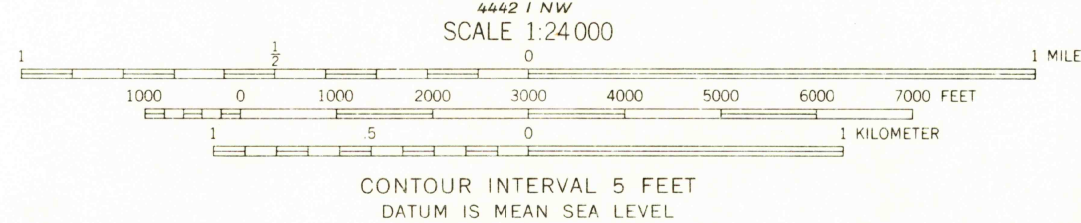
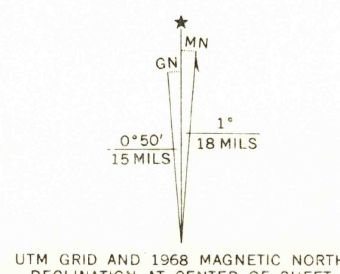


UNITED STATES
DEPARTMENT OF THE INTERIOR
GEOLOGICAL SURVEY

NEWBERRY SW QUADRANGLE
FLORIDA
7.5 MINUTE SERIES (TOPOGRAPHIC)



Maped, edited, and published by the Geological Survey in cooperation with State of Florida agencies
Control by USGS, USC&GS, and Florida Geodetic Survey
Topography by photogrammetric methods from aerial photographs taken 1965 and 1966. Field checked 1968
Polyconic projection. 1927 North American datum
10,000-foot grids based on Florida coordinate system, north zone and west zone
1000-meter Universal Transverse Mercator grid ticks, zone 17, shown in blue
Fine red dashed lines indicate selected fence and field lines where generally visible on aerial photographs. This information is unchecked



THIS MAP COMPLIES WITH NATIONAL MAP ACCURACY STANDARDS
FOR SALE BY U.S. GEOLOGICAL SURVEY, WASHINGTON, D. C. 20242
A FOLDER DESCRIBING TOPOGRAPHIC MAPS AND SYMBOLS IS AVAILABLE ON REQUEST



USGS
Historical File
Topographic Division

U.S.G.S.
FILE COPY
TOPOGRAPHIC DIVISION

ROAD CLASSIFICATION
Primary highway, all weather, hard surface
Secondary highway, all weather, hard surface
Light-duty road, all weather, improved surface
Unimproved road, fair or dry weather
State Route

NEWBERRY SW, FLA.
N2930-W8237.5/7.5

1968
AMS 4443 11 SW-SERIES V847

2535
FEB 2 1970