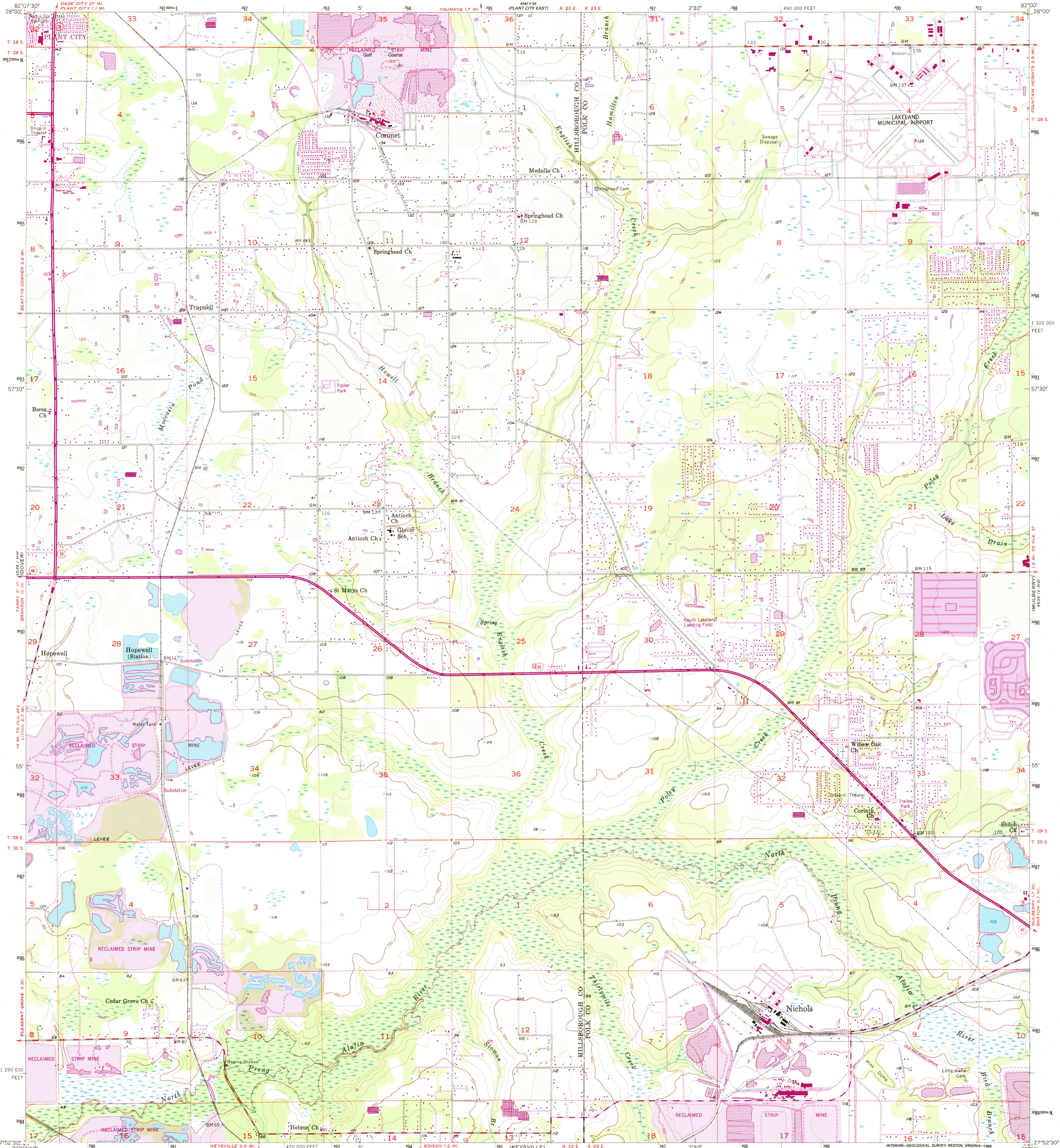


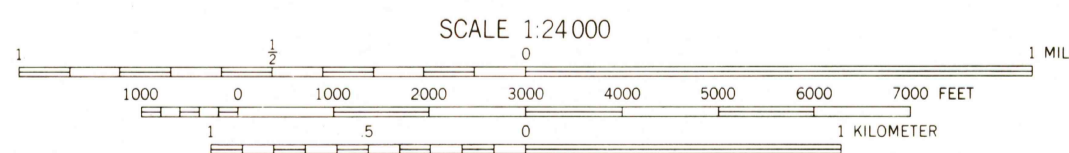
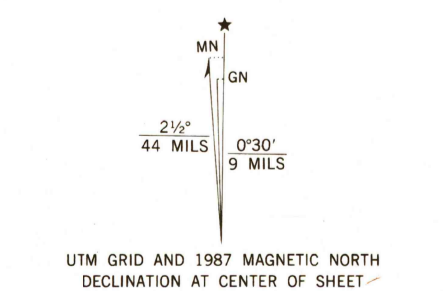
UNITED STATES
DEPARTMENT OF THE INTERIOR
GEOLOGICAL SURVEY

NICHOLS QUADRANGLE
FLORIDA
7.5 MINUTE SERIES (TOPOGRAPHIC)



Maped, edited, and published by the Geological Survey
Control by USGS, USC&GS, and Florida Geodetic Survey
Culture and drainage in part compiled from aerial photographs
taken 1947. Topography by planetable surveys 1955
Polyconic projection - 1927 North American Datum
10,000-foot grid ticks based on Florida coordinate system, west zone
1000-meter Universal Transverse Mercator grid ticks,
zone 17, shown in blue
To place on the predicted North American Datum 1983
move the projection lines 29 meters south and
18 meters west as shown by dashed corner ticks

Revisions shown in purple and woodland compiled in cooperation
with State of Florida agencies from aerial photographs
taken 1984 and other sources. This information not field checked
Map edited 1987



CONTOUR INTERVAL 10 FEET
NATIONAL GEODETIC VERTICAL DATUM OF 1929

THIS MAP COMPLIES WITH NATIONAL MAP ACCURACY STANDARDS
FOR SALE BY U.S. GEOLOGICAL SURVEY
DENVER, COLORADO 80225 OR RESTON, VIRGINIA 22092
A FOLDER DESCRIBING TOPOGRAPHIC MAPS AND SYMBOLS IS AVAILABLE ON REQUEST



RECEIVED
JAN 31 1999
USGS NMD
HISTORICAL MAP ARCHIVES

NICHOLS, FLA.
27082-H1-TF-024
1955
PHOTOREVISED 1987
DMA 4539 1 NE - SERIES V847

