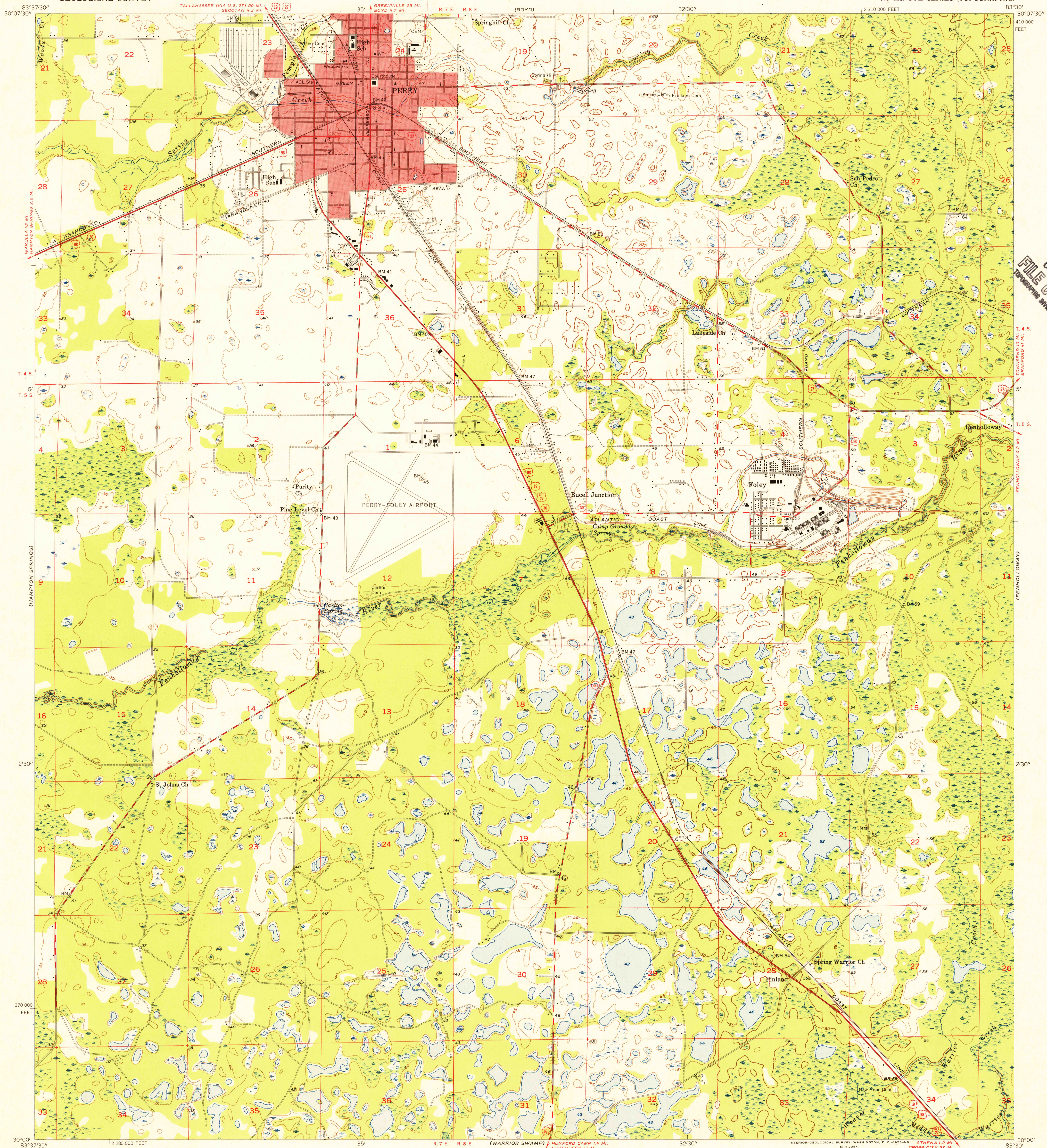


(SECOTAN)

UNITED STATES
DEPARTMENT OF THE INTERIOR
GEOLOGICAL SURVEY

PERRY QUADRANGLE
FLORIDA—TAYLOR CO.
7.5 MINUTE SERIES (TOPOGRAPHIC)

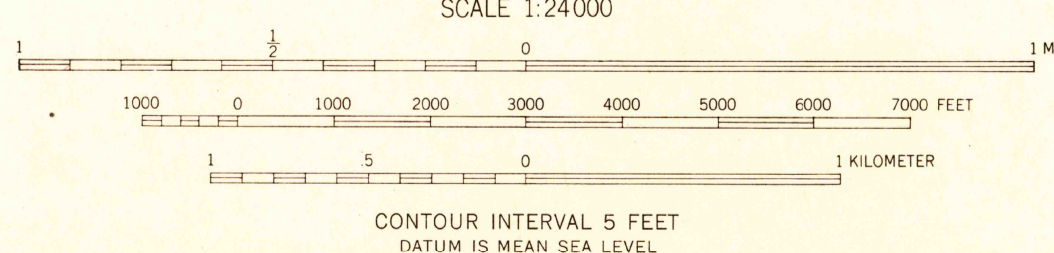
(DAY NW)



U.S.G.S.
FILE COPY
TOPOGRAPHIC DIVISION

Mapped, edited, and published by the Geological Survey
Control by USGS and USC&GS
Culture and drainage in part compiled from aerial photographs
taken 1951. Topography by plane-table surveys 1954-1955
Polyconic projection. 1927 North American datum
10,000-foot grid based on Florida coordinate system,
north zone
Red tint indicates area in which only
landmark buildings are shown

TRUE NORTH
MAGNETIC NORTH
APPROXIMATE MEAN
DECLINATION, 1955



USGS
Historical File
Topographic Division



ROAD CLASSIFICATION
Heavy-duty ——— Light-duty ———
Medium-duty ——— Unimproved dirt ———
U. S. Route State Route

U.S.G.S.
FILE COPY
TOPOGRAPHIC DIVISION

PERRY, FLA.
N 3000—W 8330/7.5

1955

MAY 10 1956

2575