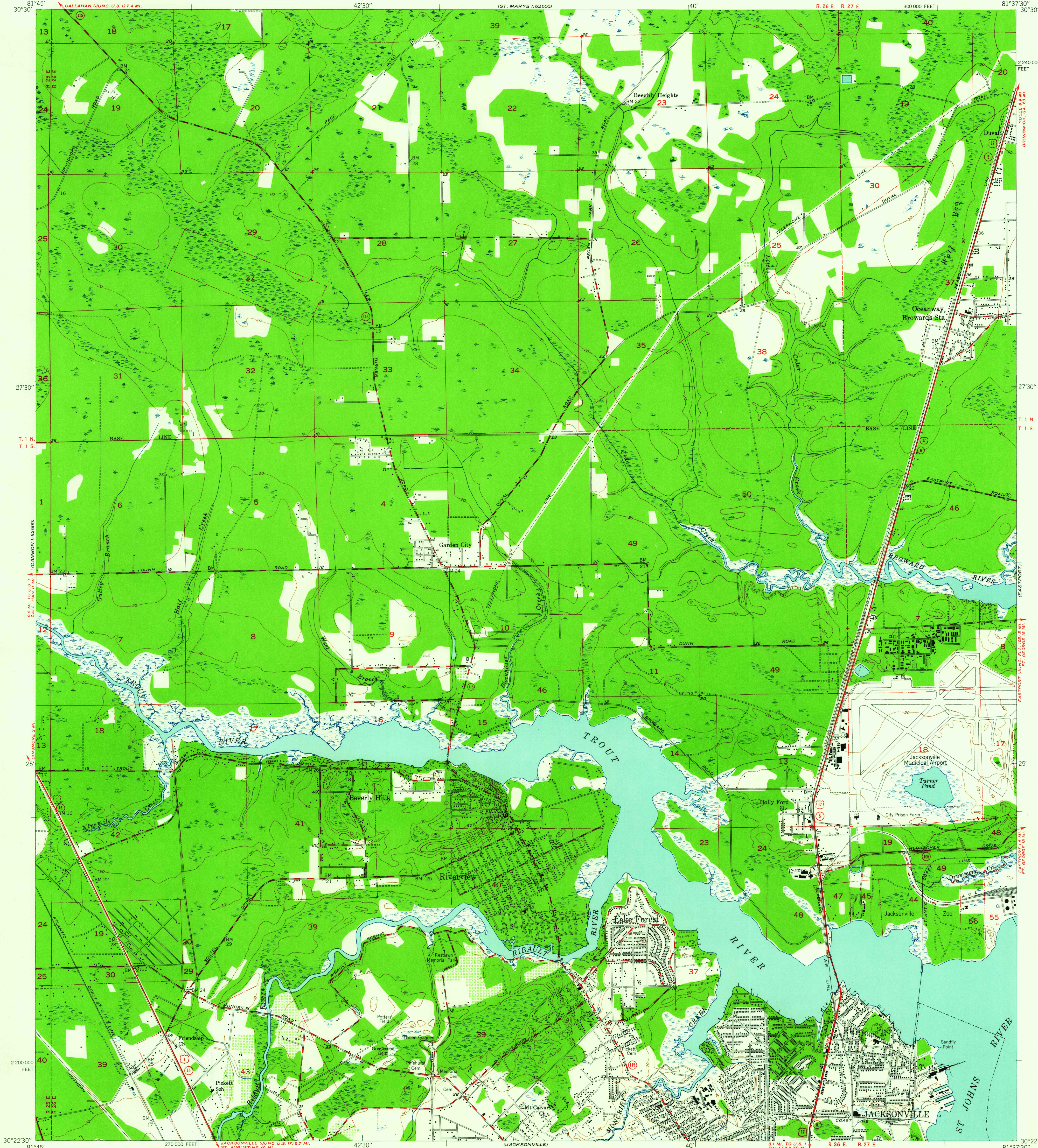


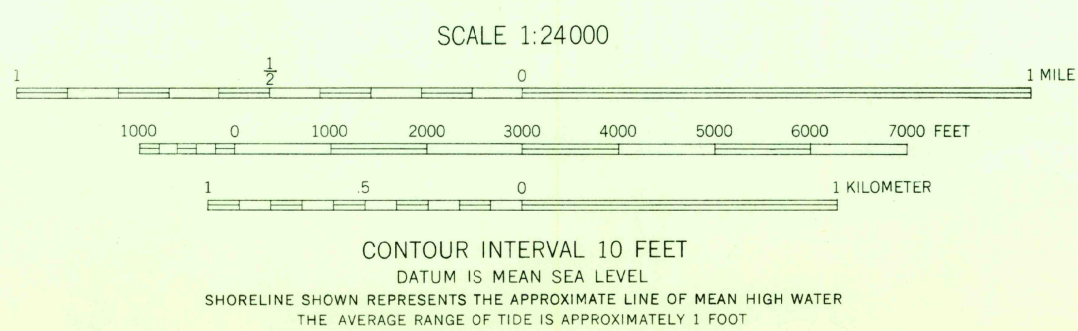
UNITED STATES
DEPARTMENT OF THE INTERIOR
GEOLOGICAL SURVEY

UNITED STATES
DEPARTMENT OF THE ARMY
CORPS OF ENGINEERS

TROUT RIVER QUADRANGLE
FLORIDA-DUVAL CO.
7.5 MINUTE SERIES (TOPOGRAPHIC)
NW 1/4 JACKSONVILLE 15' QUADRANGLE



Maped, edited, and published by the Geological Survey
Control by USC&GS, USGS, and Florida Geodetic Survey
Culture and drainage in part compiled from
USC&GS charts prepared 1933, revised 1948
Topography by plane-table methods 1948
Polyconic projection. 1927 North American datum
10,000-foot grid based on Florida coordinate system,
east zone
Land lines omitted within Jacksonville city limits



ROAD CLASSIFICATION
HARD-SURFACE ALL WEATHER ROADS DRY WEATHER ROADS
Heavy-duty 4 LANE 16 LANE Improved dirt
Medium-duty 4 LANE 16 LANE Unimproved dirt
Loose-surface, graded, or narrow hard-surface
U. S. Route State Route
TROUT RIVER, FLA.
NW 1/4 JACKSONVILLE 15' QUADRANGLE
N3022.5-W8137.5/7.5
EDITION OF 1950

THIS MAP COMPLIES WITH NATIONAL MAP ACCURACY STANDARDS
FOR SALE BY U. S. GEOLOGICAL SURVEY, WASHINGTON 25, D. C.

935