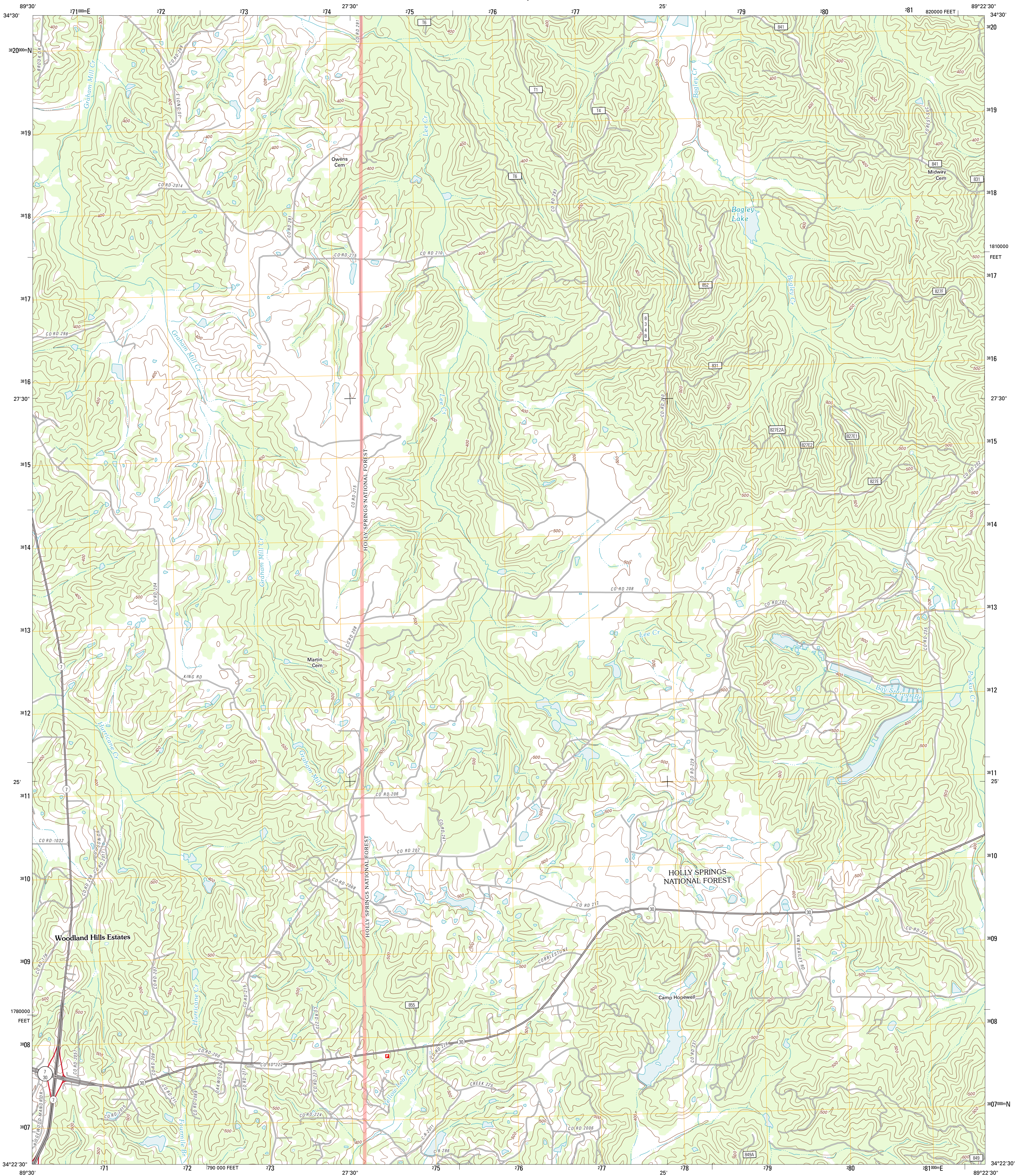




U.S. DEPARTMENT OF THE INTERIOR
U. S. GEOLOGICAL SURVEY



BAGLEY LAKE QUADRANGLE
MISSISSIPPI-LAFAYETTE CO.
7.5-MINUTE SERIES

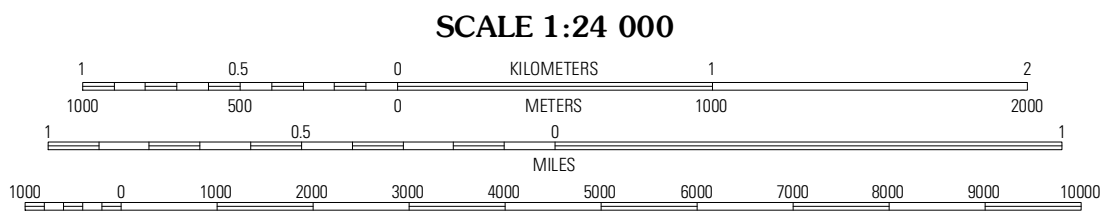


Produced by the United States Geological Survey
North American Datum of 1983 (NAD83)
World Geodetic System of 1984 (WGS84). Projection and
1 000-meter grid: Universal Transverse Mercator, Zone 16S
10 000-foot ticks: Mississippi Coordinate System of 1983
(east zone)

Imagery.....NAIP, May 2010 - July 2010
Roads.....©2006-2011 TomTom
Roads within US Forest Service Lands.....FSTopo Data
with limited Forest Service updates, 2009
Names.....©GNIS, 2011
Hydrography.....National Hydrography Dataset, 2010
Contours.....National Elevation Dataset, 2008
Boundaries.....Census, IBWC, IBC, USGS, 1972 - 2010

UTM GRID AND 2012 MAGNETIC NORTH
DECLINATION AT CENTER OF SHEET

| |
|-----------------------|
| U.S. National Grid |
| 100,000-m Square ID |
| BD |
| Grid Zone Designation |
| 16S |



CONTOUR INTERVAL 20 FEET
NORTH AMERICAN VERTICAL DATUM OF 1988

This map was produced to conform with the
National Geospatial Program US Topo Product Standard, 2011.
A metadata file associated with this product is draft version 0.6.2



| QUADRANGLE LOCATION | | |
|---------------------|-------------|-------------|
| Laws Hill | Malone | Bethlehem |
| Oxford North | Bagley Lake | Puskus Lake |
| Oxford South | Yocoma | Denmark |

ROAD CLASSIFICATION

| | |
|------------------|-------------|
| Interstate Route | State Route |
| US Route | Local Road |
| Ramp | 4WD |

Legend for road types:
Interstate Route (thick red line)
US Route (red line)
Ramp (red line with blue triangle)
FS Primary Route (blue line with white triangle)
FS Passenger Route (blue line with white triangle)
FS High Clearance Route (blue line with white triangle)
State Route (black line)
Local Road (black line)
4WD (black line with cross-hatch)
FS Primary Route (blue line with white triangle)
FS Passenger Route (blue line with white triangle)
FS High Clearance Route (blue line with white triangle)

Check with local Forest Service unit
for current travel conditions and restrictions.

BAGLEY LAKE, MS
2012