

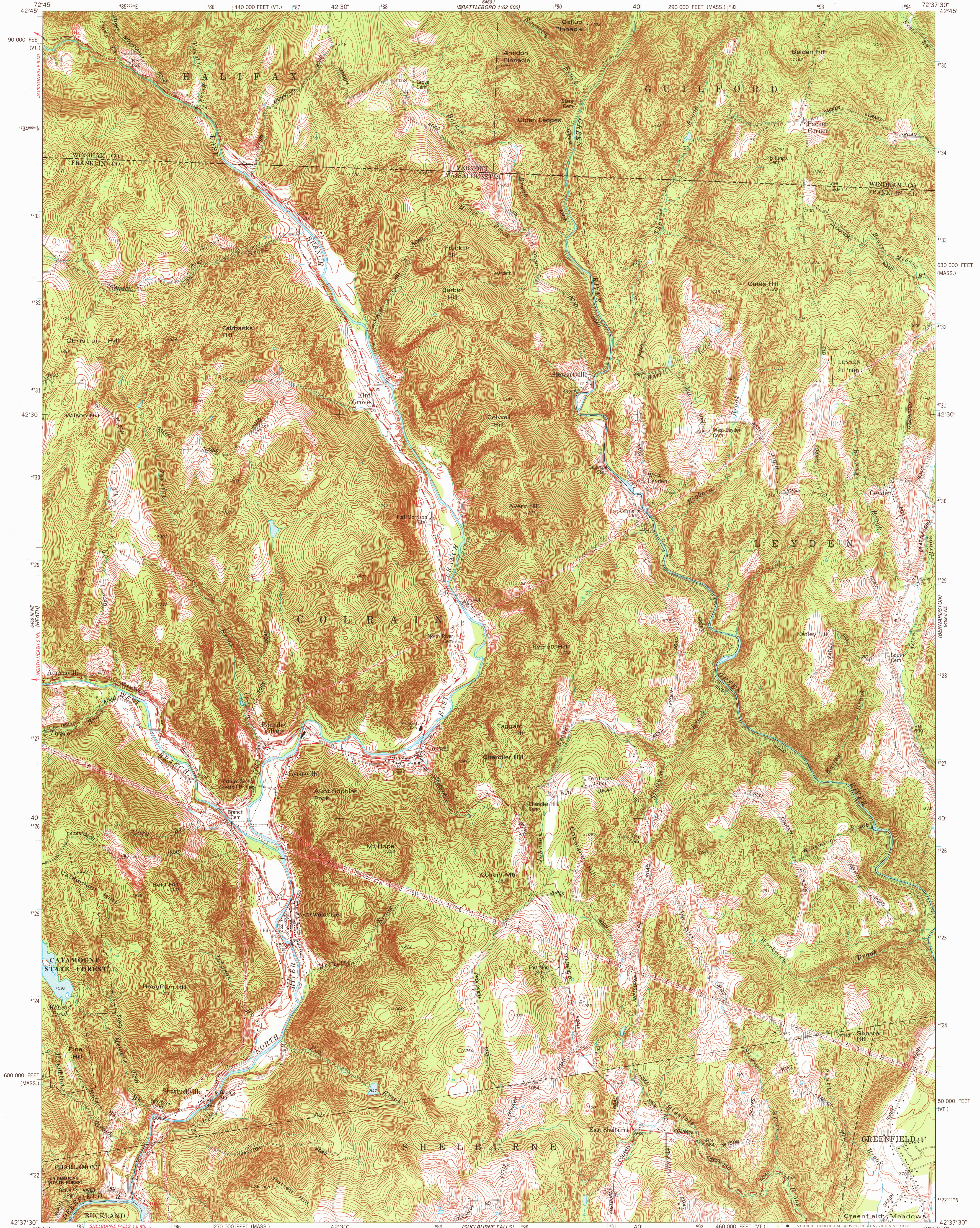
6661
1:62,500
(BRATTLEBORO)

UNITED STATES
DEPARTMENT OF THE INTERIOR
GEOLOGICAL SURVEY

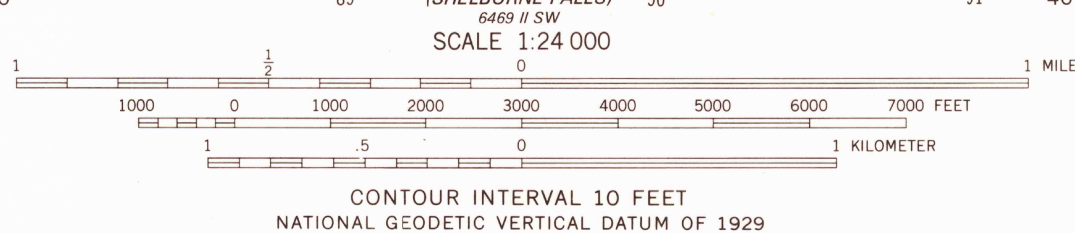
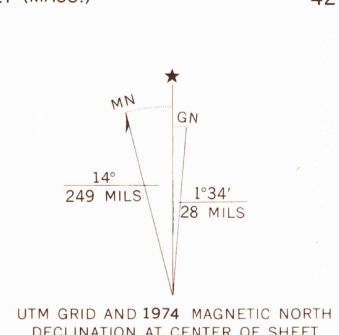
COMMONWEALTH OF MASSACHUSETTS
DEPARTMENT OF PUBLIC WORKS

COLRAIN QUADRANGLE
MASSACHUSETTS—VERMONT
7.5 MINUTE SERIES (TOPOGRAPHIC)

6661
1:62,500
(BRATTLEBORO)



Mapped, edited, and published by the Geological Survey
Control by USGS, NOS/NOAA, and Massachusetts Geodetic Survey
Topography by planetable surveys 1937 and 1944
Revised from aerial photographs taken 1972. Field checked 1974
Polyconic projection. 1927 North American datum
10,000-foot grid ticks based on Massachusetts datum system,
mainland zone, and Vermont coordinate system
1000-meter Universal Transverse Mercator grid ticks,
zone 18, shown in blue
Fine red dashed lines indicate selected fence and field lines where
generally visible on aerial photographs. This information is unchecked



ROAD CLASSIFICATION
Primary highway, hard surface ——— Light-duty road, hard or improved surface ———
Secondary highway, hard surface ——— Unimproved road ———
Interstate Route ——— U.S. Route ——— State Route ———

COLRAIN, MASS.—VT.
N4237.5—W7237.5/7.5

USGS
HISTORICAL FILE
TOPOGRAPHIC DIVISION

1977
AMS 6469 II NW—SERIES V814

THIS MAP COMPLIES WITH NATIONAL MAP ACCURACY STANDARDS
FOR SALE BY U. S. GEOLOGICAL SURVEY, RESTON, VIRGINIA 22092
A FOLDER DESCRIBING TOPOGRAPHIC MAPS AND SYMBOLS IS AVAILABLE ON REQUEST

FEB 1 1978

832