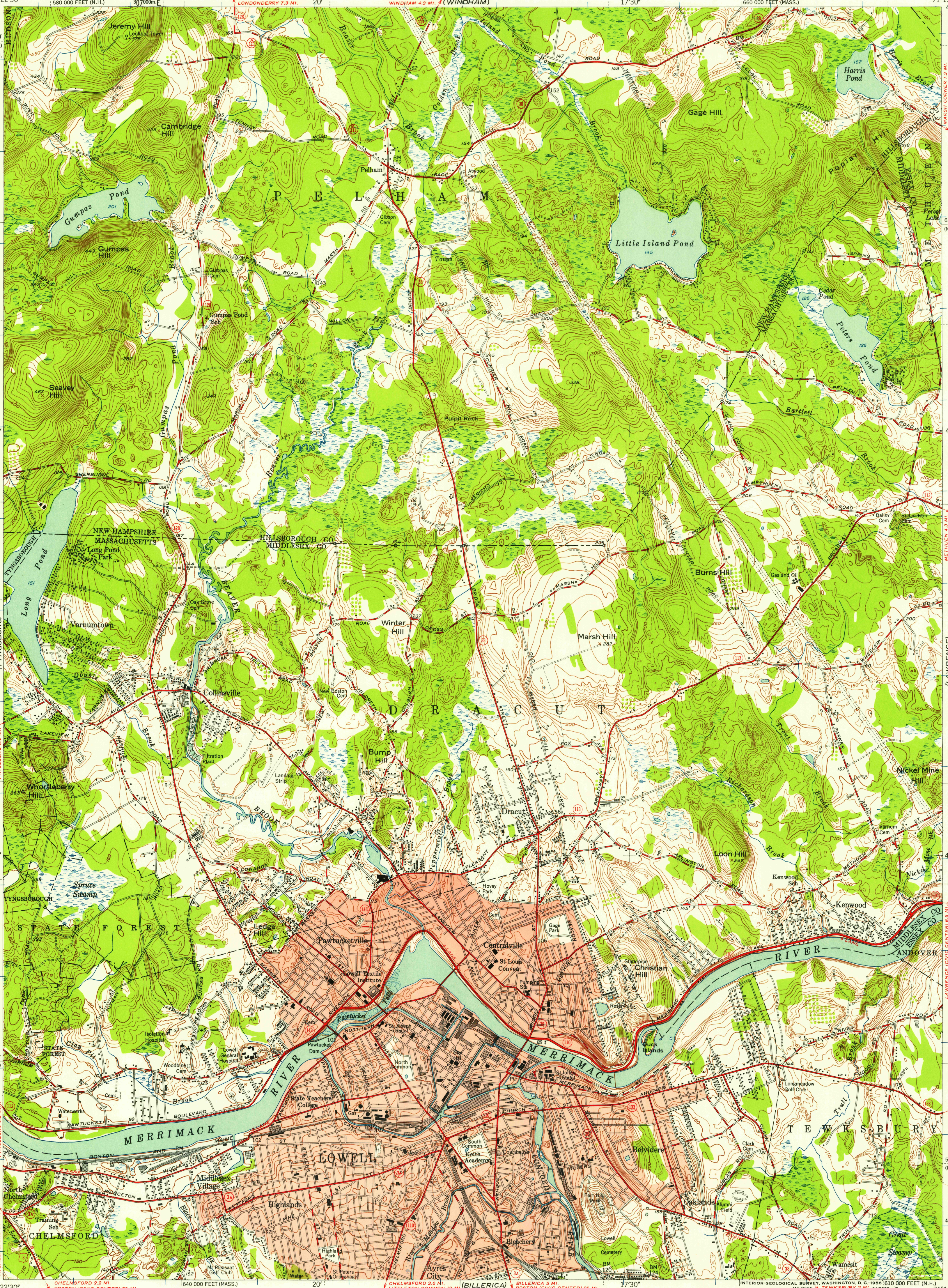


UNITED STATES
DEPARTMENT OF THE INTERIOR
GEOLOGICAL SURVEY

STATE OF MASSACHUSETTS
DEPARTMENT OF PUBLIC WORKS
WILLIAM F. CALLAHAN, COMMISSIONER
WEST DERRY 10 MI. (WINDHAM)
WINDHAM 4.3 MI. (WINDHAM)

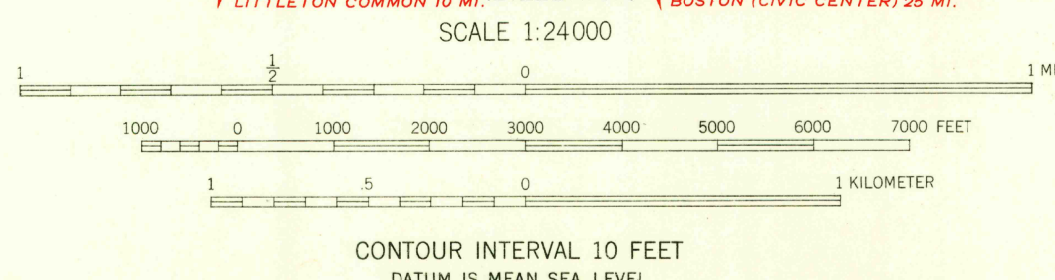
LOWELL QUADRANGLE
MASSACHUSETTS-NEW HAMPSHIRE
7.5 MINUTE SERIES (TOPOGRAPHIC)

LAYERS VILLAGE

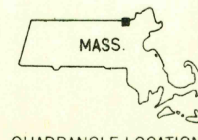


Mapped, edited, and published by the Geological Survey
Control by USGS, USGS, and Massachusetts Geodetic Survey
Topography by plane-table surveys 1939 and 1944
Revised 1950
Polyconic projection, 1927 North American datum
10,000-foot grids based on Massachusetts (Mainland) and
New Hampshire coordinate systems
Red tint indicates areas in which only
landmark buildings are shown
1000-meter Universal Transverse Mercator grid ticks
zone 19, shown in blue

APPROXIMATE MEAN
DECLINATION, 1950



USGS
Historical File
Topographic Division



ROAD CLASSIFICATION
Heavy-duty 4 LANE 16 LANE Light-duty
Medium-duty 4 LANE 16 LANE Unimproved dirt
U. S. Route State Route

U.S.G.S. FILE COPY
TOPOGRAPHIC DIVISION
LOWELL, MASS.-N.H.
N4237.5-W7115/7.5
1950

THIS MAP COMPLIES WITH NATIONAL MAP ACCURACY STANDARDS
FOR SALE BY U. S. GEOLOGICAL SURVEY, WASHINGTON 25, D. C.
A FOLDER DESCRIBING TOPOGRAPHIC MAPS AND SYMBOLS IS AVAILABLE ON REQUEST