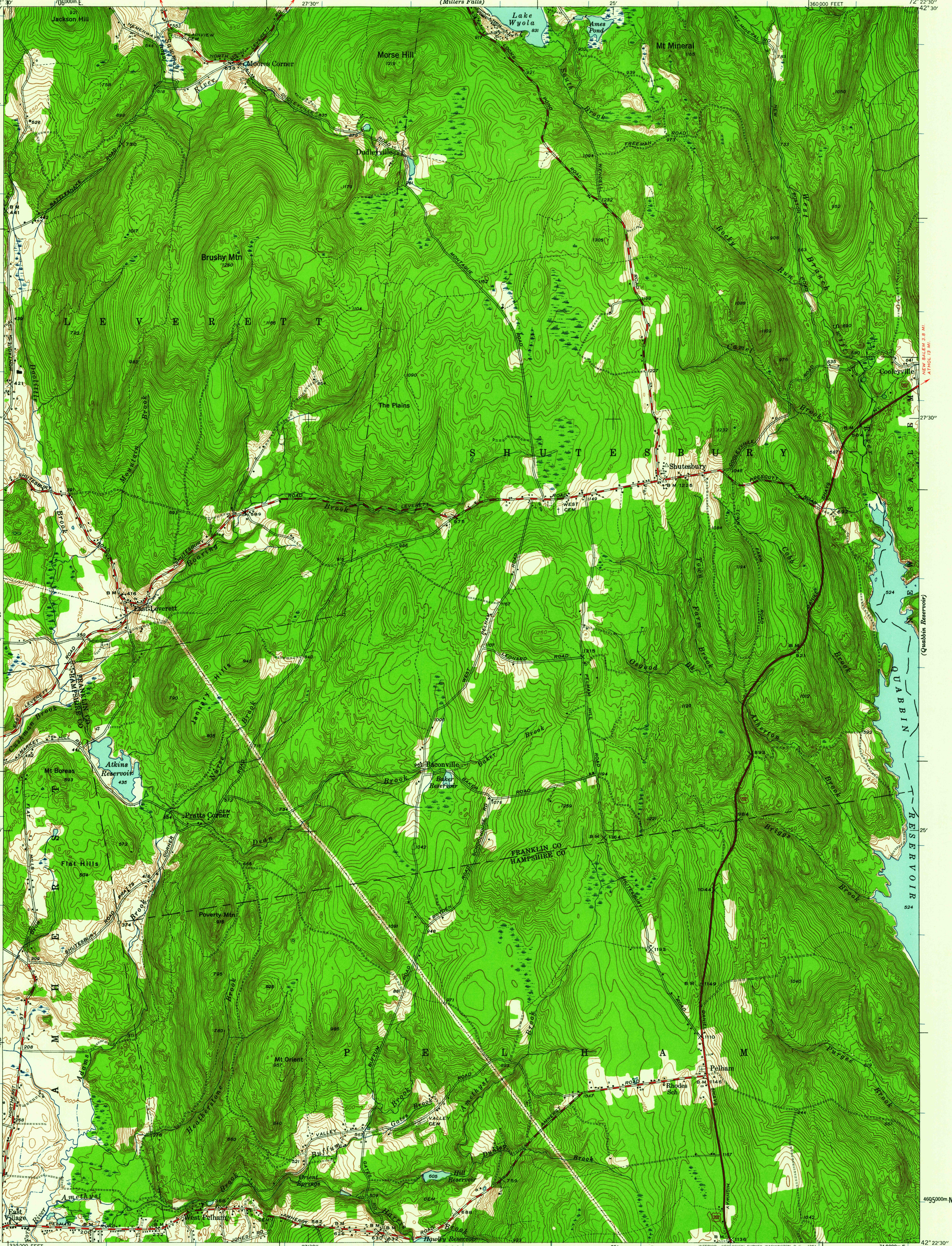




UNITED STATES  
DEPARTMENT OF THE INTERIOR  
GEOLOGICAL SURVEY

STATE OF MASSACHUSETTS  
DEPARTMENT OF PUBLIC WORKS

MASSACHUSETTS  
SHUTESBURY QUADRANGLE  
7½-MINUTE SERIES



Topography by R. H. Runyan, B. P. Taylor,  
F. M. Mann, E. M. Thompson, E. A. Krahmer,  
B. J. Keating, H. C. Crumpacker, and J. L. Twombly  
Culture and drainage in part compiled from aerial photographs  
surveyed in 1939-1940. Revised in 1950

ROAD CLASSIFICATION  
Heavy-duty ——— Light-duty ———  
Medium-duty ——— Unimproved dirt ———  
U. S. Route

APPROXIMATE MEAN  
DECLINATION, 1950

SCALE 1:24,000  
1 0 1000 2000 3000 4000 5000 6000 7000 FEET  
1 5 0 1 KILOMETER  
CONTOUR INTERVAL 10 FEET  
DATUM IS MEAN SEA LEVEL

THIS MAP COMPLIES WITH NATIONAL MAP ACCURACY STANDARDS  
FOR SALE BY U. S. GEOLOGICAL SURVEY, WASHINGTON 25, D. C.  
A FOLDER DESCRIBING TOPOGRAPHIC MAPS AND SYMBOLS IS AVAILABLE ON REQUEST

USGS  
Historical File  
Topographic Division

Polyconic projection. 1927 North American datum  
10000 foot grid based on Massachusetts (Mainland)  
rectangular coordinate system  
1000-meter Universal Transverse Mercator  
grid ticks, zone 18, shown in blue

SHUTESBURY, MASS.  
N4222.5 - W7222.5/7.5

1950  
USGS  
FILE COPY

JAN 18 1961

2098