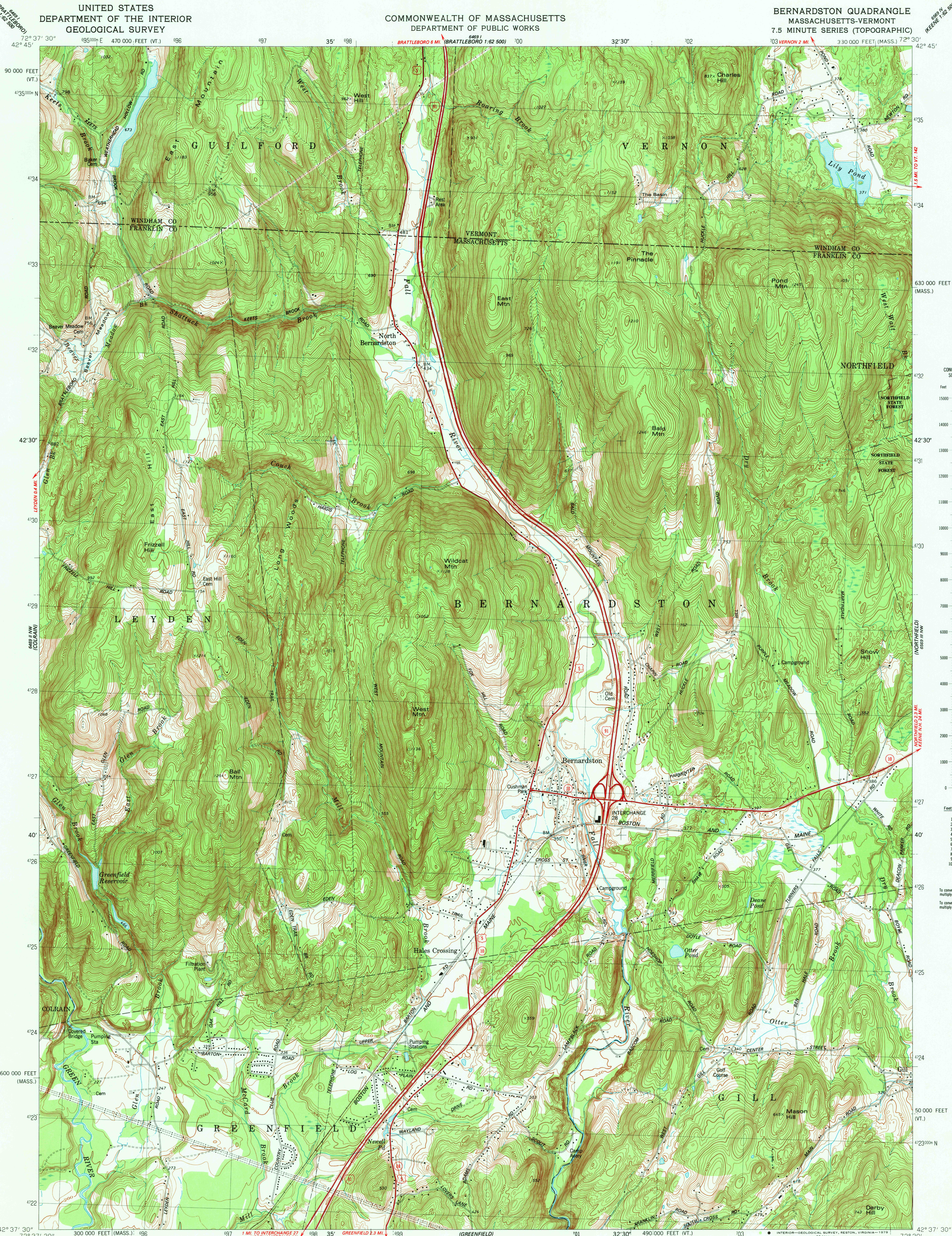


UNITED STATES
DEPARTMENT OF THE INTERIOR
GEOLOGICAL SURVEY

COMMONWEALTH OF MASSACHUSETTS
DEPARTMENT OF PUBLIC WORKS

BERNARDSTON QUADRANGLE
MASSACHUSETTS-VERMONT
7.5 MINUTE SERIES (TOPOGRAPHIC)



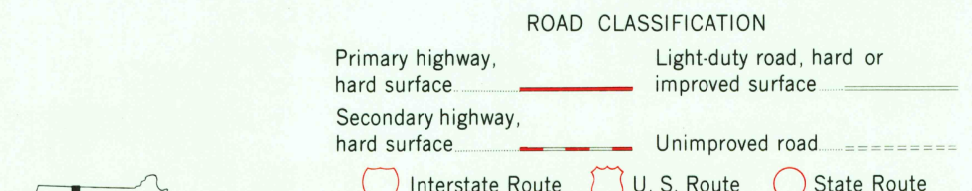
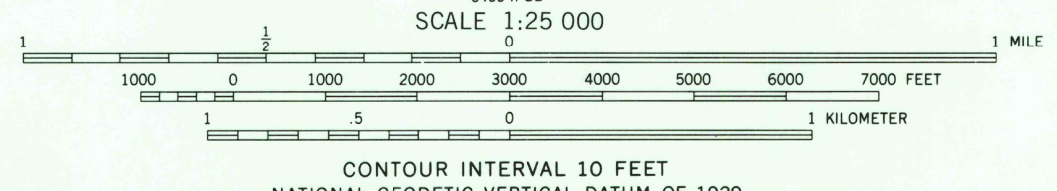
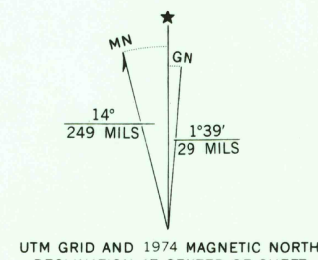
CONVERSION
SCALES

Feet	Meters
15000	4500
14000	4000
13000	3500
12000	3000
11000	2500
10000	2000
9000	1500
8000	1000
7000	500
6000	0
5000	0
4000	0
3000	0
2000	0
1000	0
0	0

To convert feet to meters
multiply by 3048

To convert meters to feet
multiply by 3.2808

Mapped, edited, and published by the Geological Survey
Control by USGS, NOS/NOAA, and Massachusetts Geodetic Survey
Topography by plane-table surveys 1936 and 1944
Revised from aerial photographs taken 1972. Field checked 1974
Polyconic projection. 1927 North American datum
10,000-foot grid ticks based on Massachusetts coordinate system,
mainland zone, and Vermont coordinate system
1000-meter Universal Transverse Mercator grid,
zone 18



BERNARDSTON, MASS.-VT.
N4237.5-W7230.7.5

1977
AMS 6469 II NE-SERIES V814

USGS
HISTORICAL FILE
NATIONAL MAPPING DIVISION

MAY 28 1981

4100