

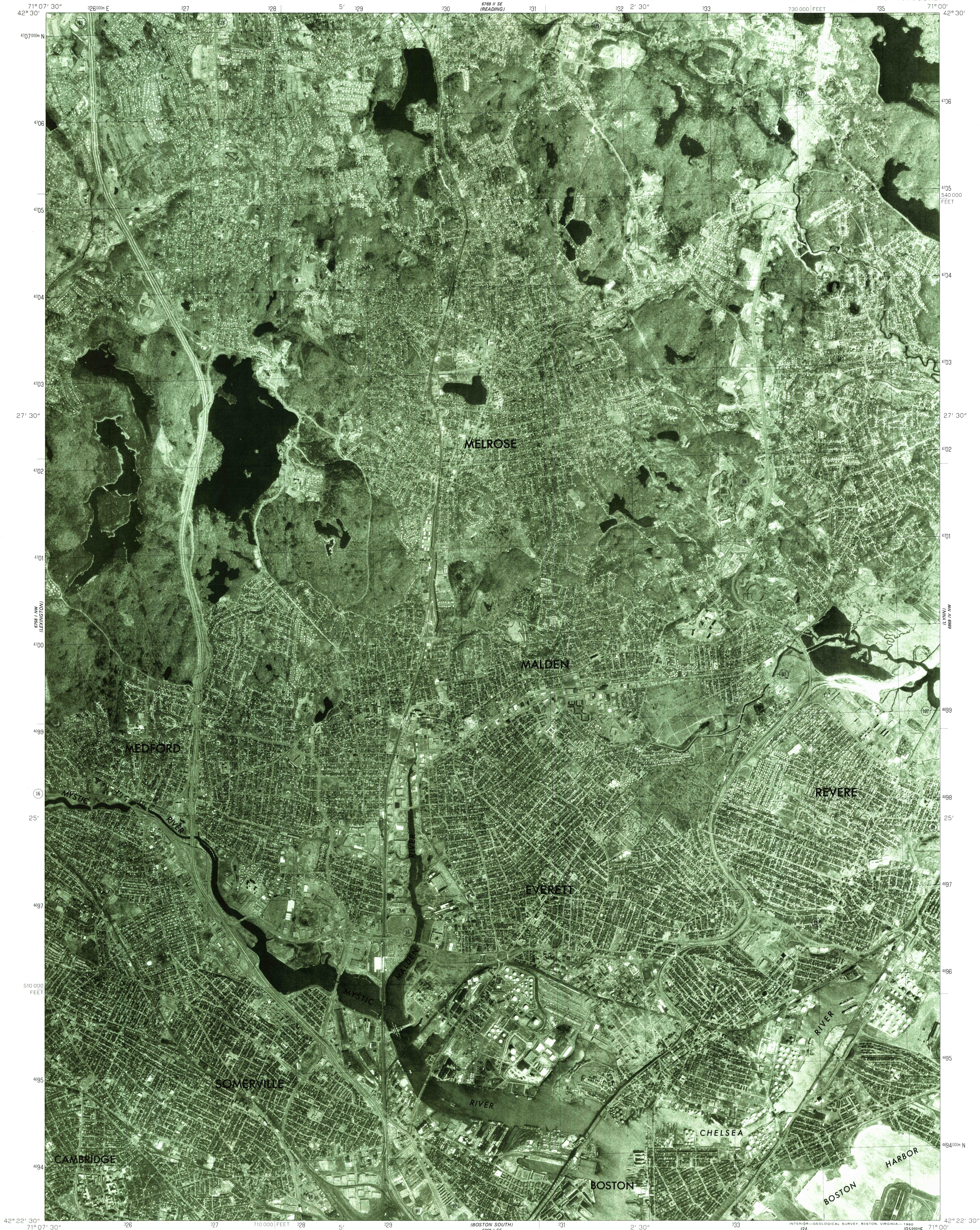
688 1:25  
(MILWAUKEE)

UNITED STATES  
DEPARTMENT OF THE INTERIOR  
GEOLOGICAL SURVEY

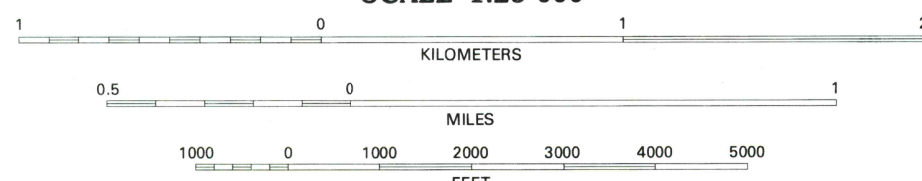
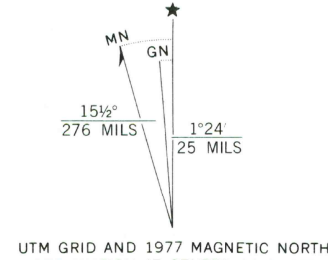
COMMONWEALTH OF MASSACHUSETTS  
DEPARTMENT OF PUBLIC WORKS

BOSTON NORTH QUADRANGLE  
MASSACHUSETTS  
7.5 MINUTE SERIES ORTHOPHOTOQUAD

688 1:25  
(MILWAUKEE)



Produced and published by the Geological Survey  
Orthophoto prepared from 1:80,000-scale  
aerial photograph taken April 1, 1977  
Projection and 10,000-foot grid ticks: Massachusetts  
coordinate system, mainland zone (Lambert conformal conic)  
1000-meter Universal Transverse Mercator grid,  
zone 19. 1927 North American datum  
Photomicroscopy rectified by optical scanning  
which may produce double or mismatched images;  
use the mean of image positions for map point



THIS MAP COMPLIES WITH NATIONAL MAP ACCURACY STANDARDS  
FOR SALE BY U. S. GEOLOGICAL SURVEY, RESTON, VIRGINIA 22092



QUADRANGLE LOCATION

PRINCIPAL NUMBERED HIGHWAYS  
Interstate Route U. S. Route State Route

This quadrangle area also covered by  
1:25,000-scale topographic map

BOSTON NORTH, MASS.  
N4222.5-W7100/7.5

USGS  
Historical File  
Topographic Division

1977  
DMA 6768 1 NE-SERIES V014

JUL 1 6 1980