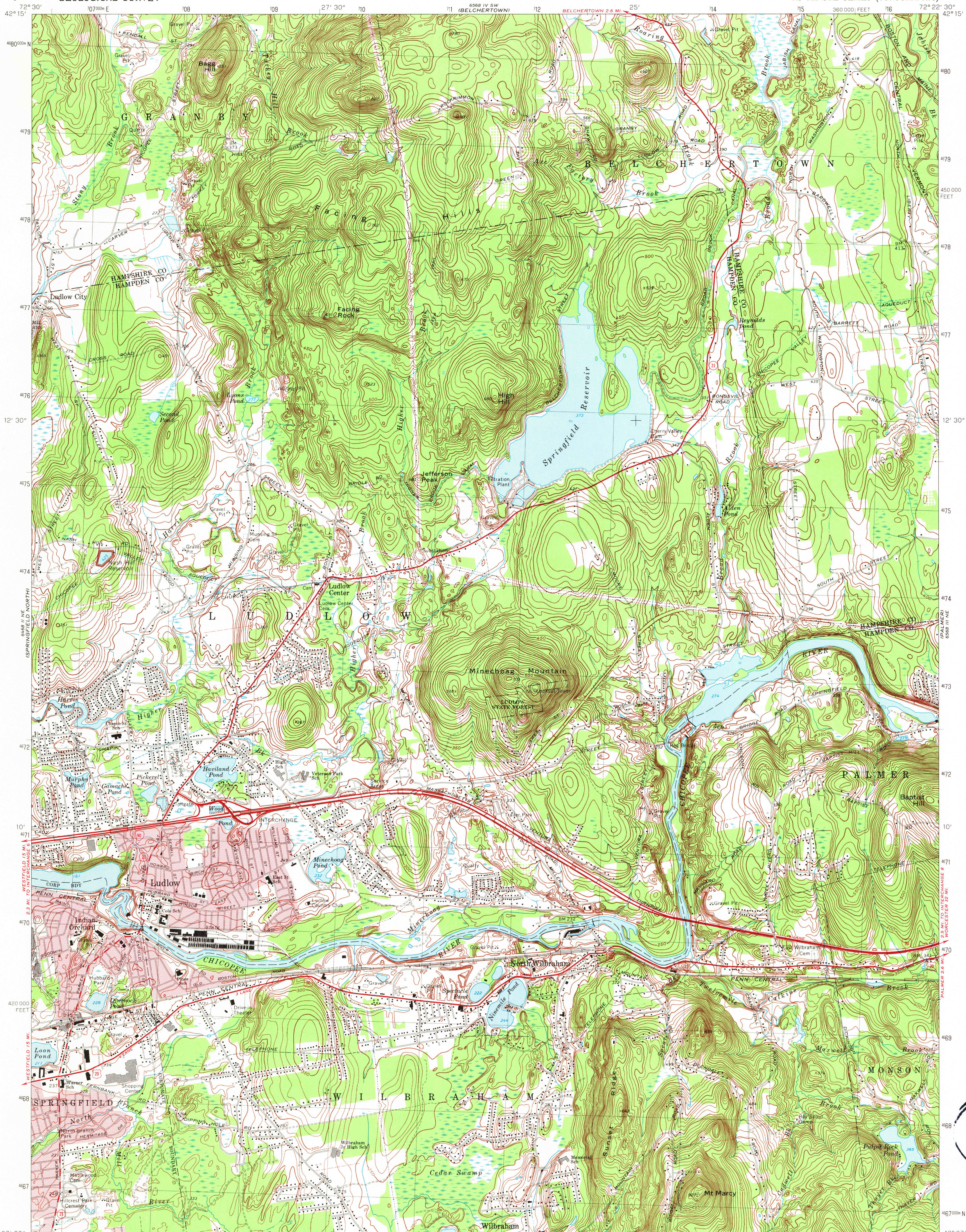


UNITED STATES  
DEPARTMENT OF THE INTERIOR  
GEOLOGICAL SURVEY

COMMONWEALTH OF MASSACHUSETTS  
DEPARTMENT OF PUBLIC WORKS

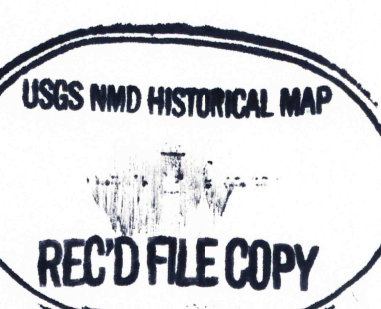
LUDLOW QUADRANGLE  
MASSACHUSETTS  
7.5 MINUTE SERIES (TOPOGRAPHIC)



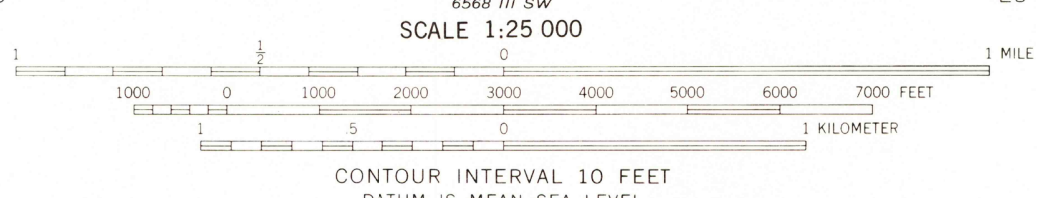
CONVERSION SCALES

Feet	Meters
15000	4500
14000	4000
13000	3500
12000	3000
11000	2500
10000	2000
9000	1500
8000	1000
7000	500
6000	0
5000	0
4000	0
3000	0
2000	0
1000	0
0	0

To convert feet to meters multiply by 3048  
To convert meters to feet multiply by 3.2808

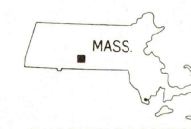


Mapped, edited, and published by the Geological Survey  
Control by USGS, USCGS, and Massachusetts Geodetic Survey  
Topography by planetable surveys 1938. Revised from aerial  
photographs taken 1967. Field checked 1969  
Polyconic projection. 1927 North American datum  
10,000-foot grid based on Massachusetts coordinate system,  
mainland zone  
1000-meter Universal Transverse Mercator grid,  
zone 18  
Fine red dashed lines indicate selected fence and field lines where  
generally visible on aerial photographs. This information is unchecked  
Red tint indicates areas in which only landmark buildings are shown  
Map photoinspected 1975  
No major culture or drainage changes observed



ROAD CLASSIFICATION  
Primary highway, all weather, hard surface  
Secondary highway, all weather, hard surface  
Light-duty road, all weather, improved surface  
Unimproved road, fair or dry weather  
Interstate Route  
U. S. Route  
State Route

THIS MAP COMPLIES WITH NATIONAL MAP ACCURACY STANDARDS  
FOR SALE BY U. S. GEOLOGICAL SURVEY, RESTON, VIRGINIA 22092  
A FOLDER DESCRIBING TOPOGRAPHIC MAPS AND SYMBOLS IS AVAILABLE ON REQUEST



LUDLOW, MASS.  
N4207.5-W7222.5/7.5  
PHOTOINSPECTED 1975  
1969

AMS 6568 III NW-SERIES V814