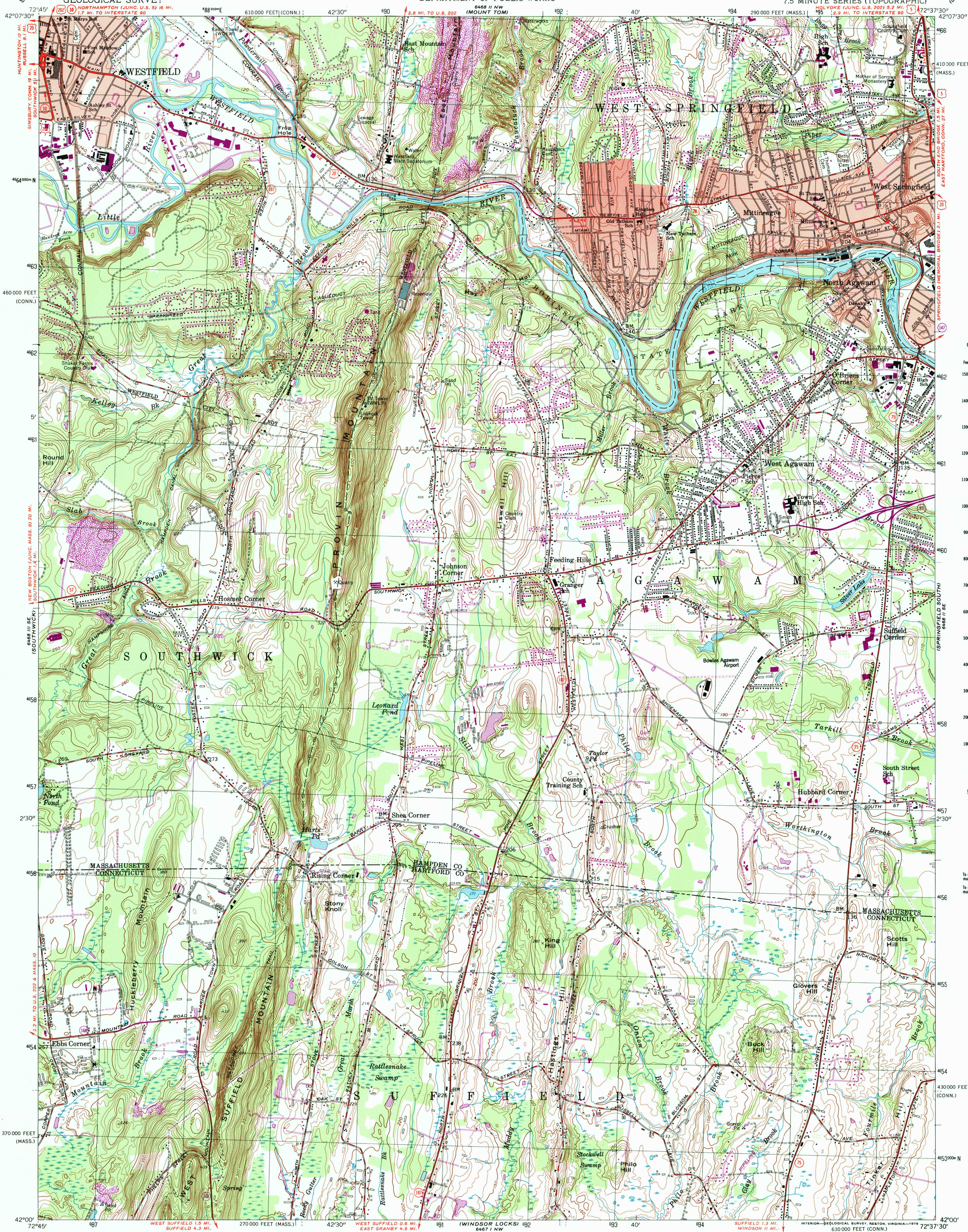


UNITED STATES
DEPARTMENT OF THE INTERIOR
GEOLOGICAL SURVEY

STATE OF MASSACHUSETTS
DEPARTMENT OF PUBLIC WORKS

WEST SPRINGFIELD QUADRANGLE
MASSACHUSETTS-CONNECTICUT
7.5 MINUTE SERIES (TOPOGRAPHIC)



CONVERSION SCALES	
Feet	Meters
15000	4500
14000	4200
13000	4000
12000	3600
11000	3300
10000	3000
9000	2700
8000	2400
7000	2100
6000	1800
5000	1500
4000	1200
3000	900
2000	600
1000	300
500	150
0	0

Feet	Meters
1	3048
2	6096
3	9144
4	12192
5	15240
6	18288
7	21336
8	24384
9	27432
10	30480

To convert feet to meters
multiply by .3048
To convert meters to feet
multiply by 3.2808

Mapped, edited, and published by the Geological Survey

Control by USGS, USC&GS, Massachusetts Geodetic Survey,
Massachusetts Harbor and Land Commission, and
Connecticut Geodetic Survey

Topography by planetable surveys 1933 and 1942-1943
Culture revised from aerial photographs by photogrammetric
methods. Aerial photographs taken 1957. Field check 1958

Polyconic projection. 1927 North American datum
10,000-foot grids based on Massachusetts coordinate system,
mainland zone, and Connecticut coordinate system
1000-meter Universal Transverse Mercator grid,
zone 18

Red tint indicates areas in which only
landmark buildings are shown

There may be private inholdings within the boundaries of
the National or State reservations shown on this map



ROAD CLASSIFICATION
Heavy-duty ——— Light-duty ———
Medium-duty ——— Unimproved dirt ———
U.S. Route ——— State Route ———

THIS MAP COMPLIES WITH NATIONAL MAP ACCURACY STANDARDS
FOR SALE BY U.S. GEOLOGICAL SURVEY
DENVER, COLORADO 80225, OR RESTON, VIRGINIA 22092
A FOLDER DESCRIBING TOPOGRAPHIC MAPS AND SYMBOLS IS AVAILABLE ON REQUEST

Revisions shown in purple compiled in cooperation with State of
Massachusetts agencies from aerial photographs taken 1977 and other
source data. This information not field checked. Map edited 1979

WEST SPRINGFIELD, MASS.-CONN.
N4200-W7237.5/7.5

1958
PHOTOREVISED 1979
AMS 6468 II SW-SERIES V814

