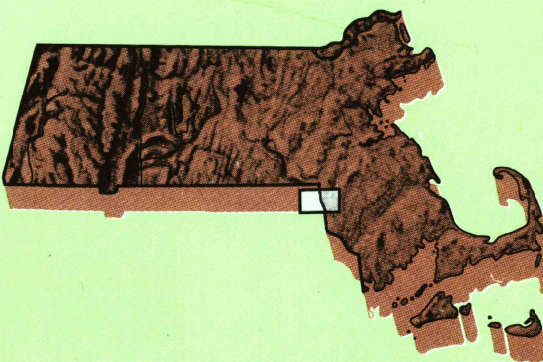


ATTLEBORO, MASSACHUSETTS—RHODE ISLAND

7.5 X 15 MINUTE SERIES (TOPOGRAPHIC)

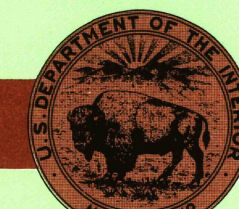
Attleboro
MASSACHUSETTS—
RHODE ISLAND

1:25 000-scale metric
topographic map



7.5 X 15 MINUTE QUADRANGLE
SHOWING

- Contours and elevations
in meters
- Highways, roads and other
manmade structures
- Water features
- Woodland areas
- Geographic names



GEOLOGICAL SURVEY

1987

Produced by the United States Geological Survey
in cooperation with Massachusetts Department of
Public Works

Control by USGS, NOS/NOAA, Commonwealth of Massachusetts
and State of Rhode Island agencies

Compiled by photogrammetric methods from aerial photographs
taken 1981. Field checked 1982. Map edited 1987.
This area also covered by 7.5-minute 1:25 000-scale maps:
Pawtucket 1975 and Attleboro 1964

Projection and 1000-meter grid, zone 19
Universal Transverse Mercator

10 000-foot grid ticks based on Massachusetts coordinate
system, mainland zone, and Rhode Island coordinate system

1927 North American Datum
To place on the predicted North American Datum 1983,
move the projection lines 6 meters south and
41 meters west as shown by dashed corner ticks

There may be private inholdings within the boundaries of
the National or State reservations shown on this map

CONTOUR INTERVAL 3 METERS

NATIONAL GEODETIC VERTICAL DATUM OF 1929

CONTROL ELEVATIONS SHOWN TO THE NEAREST 0.1 METER

OTHER ELEVATIONS SHOWN TO THE NEAREST 0.5 METER

THIS MAP COMPLIES WITH NATIONAL MAP ACCURACY STANDARDS

CONVERSION TABLE		DECLINATION DIAGRAM	ADJOINING MAPS			
Meters	Feet		1	2	3	
1	3.2808		1	Underbridge		
2	6.5616		2	Franklin		
3	9.8424		3	Brookline		
4	13.1232		4	Cambridge		
5	16.4040		5	Taunton		
6	19.6848		6	North Scituate		
7	22.9656		7	Providence		
8	26.2464		8	Somerset		
9	29.5272					
10	32.8080					
To convert meters to feet multiply by 3.2808		UTM grid convergence (G) and 1987 magnetic declination (M) at center of map Diagram is approximate				
To convert feet to meters multiply by 0.3048						

ISBN 0-607-00752-4



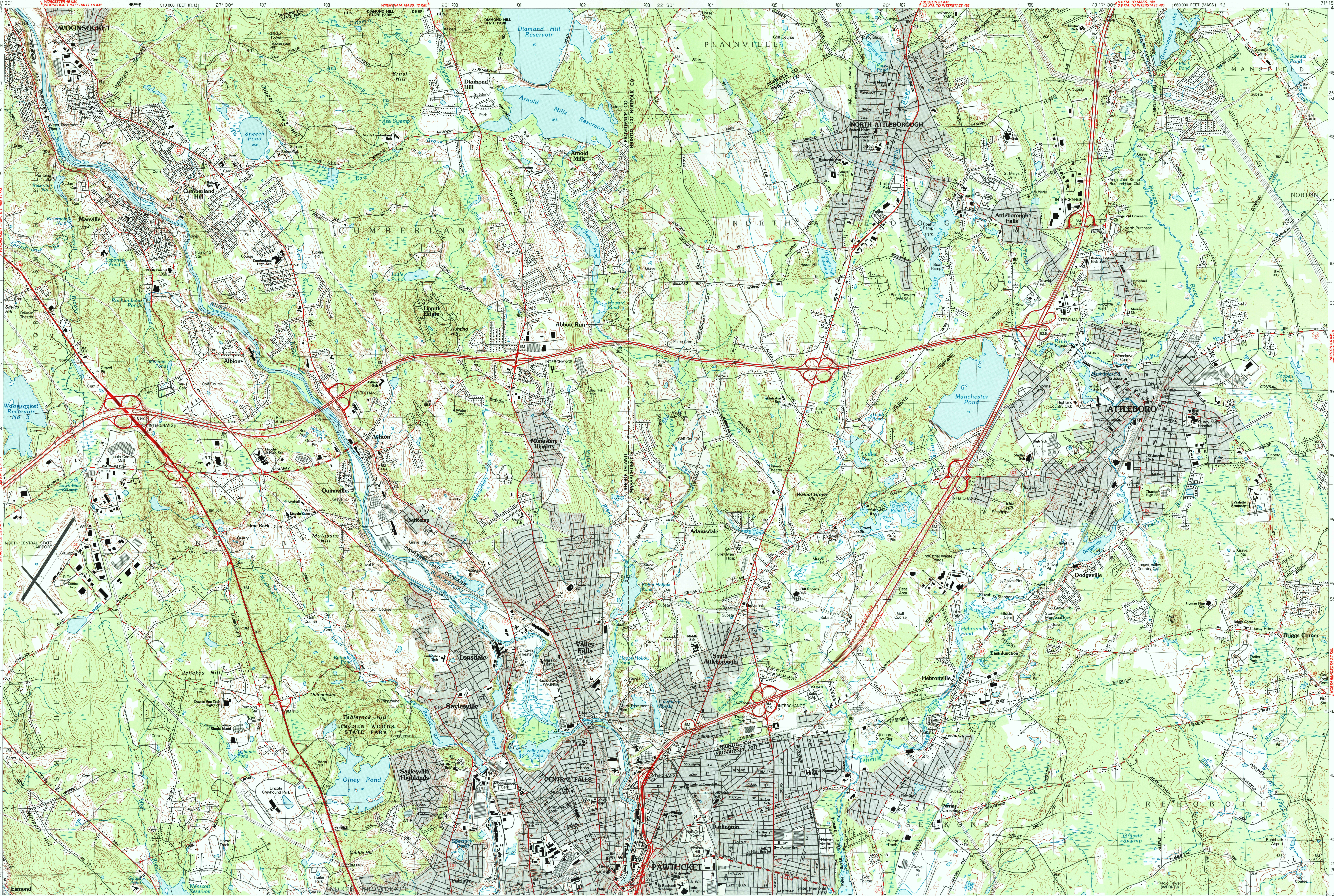
Topographic Map Symbols

Primary highway, hard surface	
Secondary highway, hard surface	
Light-duty road, hard or improved surface	
Unimproved road, trail	
Route marker: Interstate, U. S., State	
Railroad: standard gage; narrow gage	
Bridge, drawbridge	
Footbridge, overpass, underpass	
Built-up area: only selected landmark buildings shown	
House; barn; church; school; large structure	
Boundary:	
National, with monument	
State	
County, parish	
Civil township, precinct, census	
Incorporated city, village, town	
National or State reservation; small park	
Land grant with monument; found section corner	
U. S. public lands survey; range, township, section	
Range, township, section line: location approximate	
Fence or field line	
Power transmission line, located tower	
Dam; dam with lock	
Cemetery; grave	
Campground; picnic area; U. S. location monument	
Windmill; water well; spring	
Mine shaft; prospect; adit or ore	
Control: horizontal station; vertical station; spot elevation	
Contours: index; intermediate; supplementary; depression	
Distorted surface: strip mine; lava; sand	
Bathymetric contours; index; intermediate	
Perennial lake and stream; intermittent lake and stream	
Rapids, large and small; falls, large and small	
Submerged marsh; marsh; swamp	
Land subject to controlled inundation; woodland	
Swamp; mangrove	
Orchard; vineyard	

A pamphlet describing topographic maps is available, on request

FOR SALE BY U. S. GEOLOGICAL SURVEY
P.O. BOX 25286, DENVER, COLORADO 80225

1987



INTERIOR—GEOLOGICAL SURVEY, RESTON, VIRGINIA—1987

ATTLEBORO, MASSACHUSETTS—RHODE ISLAND
41071-H3-TM-025

SCALE 1:25 000

1 CENTIMETER ON THE MAP REPRESENTS 250 METERS ON THE GROUND

CONTOUR INTERVAL 3 METERS