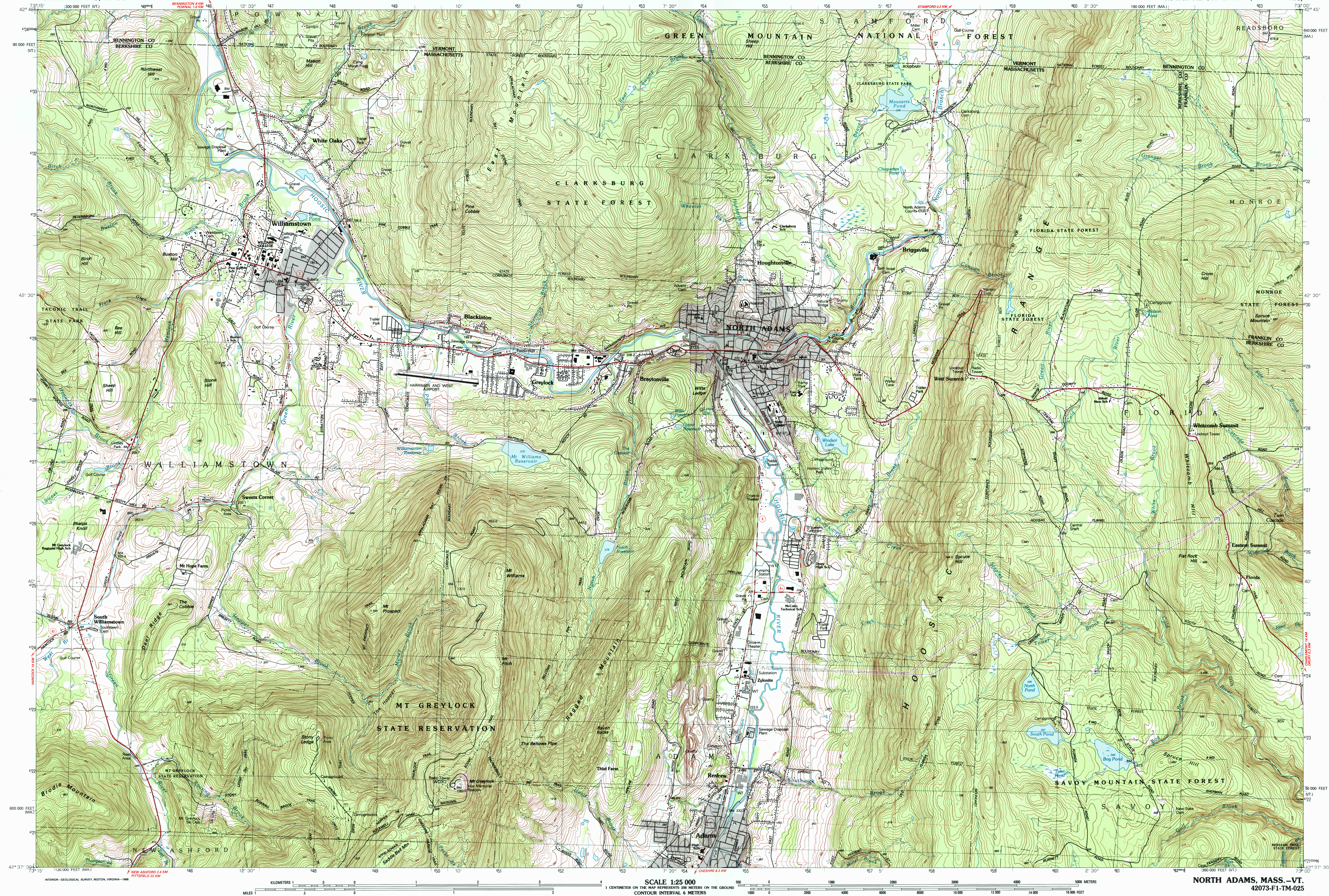


NORTH ADAMS, MASS.—VT.

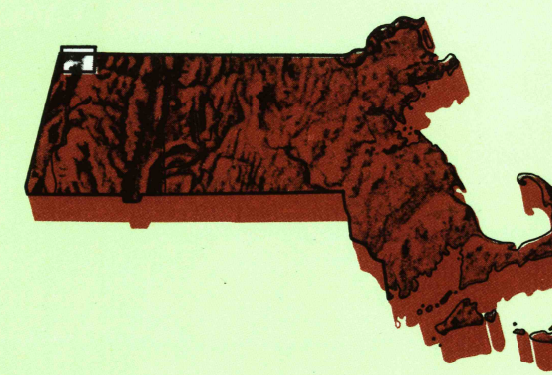
7.5 X 15 MINUTE SERIES (TOPOGRAPHIC)



North Adams

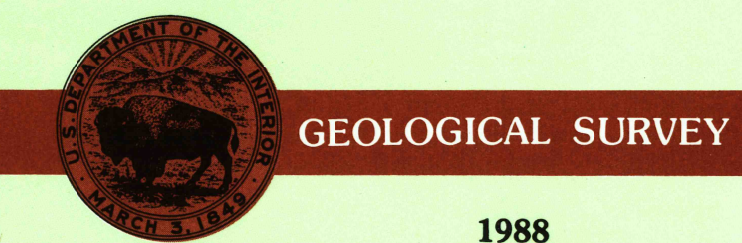
MASSACHUSETTS-VERMONT

1:25 000-scale metric
topographic map



7.5 X 15 MINUTE QUADRANGLE
SHOWING

- Contours and elevations in meters
- Highways, roads and other manmade structures
- Water features
- Woodland areas
- Geographic names



Produced by the United States Geological Survey
Control by USGS, NOS/NOAA, and Commonwealth of Massachusetts agencies

Compiled by photogrammetric methods from aerial photographs taken 1981 and 1982. Field checked 1984. Map edited 1988

This area also covered by 7.5-minute, 1:24,000-scale maps: North Adams and Williamstown dated 1973

Projection and 1000-meter grid, zone 18

Universal Transverse Mercator

10,000-foot grid ticks: Massachusetts coordinate system, mainland zone, and Vermont coordinate system

1927 North American Datum

To place on the predicted North American Datum 1983, move the projection lines 5 meters south and 36 meters west as shown by dashed corner ticks

There may be private inholdings within the boundaries of the National or State reservations shown on this map

CONTOUR INTERVAL 6 METERS

NATIONAL GEODETIC VERTICAL DATUM OF 1929

CONTOUR ELEVATIONS SHOWN TO THE NEAREST 0.1 METER

OTHER ELEVATIONS SHOWN TO THE NEAREST METER

THIS MAP COMPLIES WITH NATIONAL MAP ACCURACY STANDARDS

FOR SALE BY U.S. GEOLOGICAL SURVEY

P.O. BOX 25286, DENVER, COLORADO 80225

CONVERSION TABLE		DECLINATION DIAGRAM		ADJOINING MAPS			
Meters	Feet			1	2	3	
1	3.2808			4	5	6	7
2	6.5617			8	9	10	11
3	9.8425			12	13	14	15
4	13.1234			16	17	18	19
5	16.4042			20	21	22	23
6	19.6850			24	25	26	27
7	22.9658			28	29	30	31
8	26.2466			32	33	34	35
9	29.5274			36	37	38	39
10	32.8082			40	41	42	43

To convert meters to feet multiply by 3.2808

To convert feet to meters multiply by 0.3048

UTM grid convergence (GN) and 1983 magnetic declination (MD) at center of map

Diagram is approximate

RECEIVED
DEC 3 1 2000

ISBN 0-607-23483-0
9 780607 234831

USGS NWD
HISTORICAL MAP ARCHIVES

Topographic Map Symbols

Primary highway, hard surface	Secondary highway, hard surface	Light-duty road, hard or improved surface	Unimproved road, trail	Road marker: Interstate, U.S., State	Railroad: standard gage; narrow gage	Bridge: drawbridge	Footbridge; overpass; underpass	Build-up area: only selected landmark buildings shown	House; barn; church; school; large structure	Boundary:	National, with monument	State	County, parish	Civil township, precinct, district	Incorporated city, village, town	National or State reservation; small park	Land grant with monument; found section corner	U.S. public lands survey: range, township, section	Range, township, section line: location approximate	Fence or field line	Power transmission line, located tower	Dam: dam with lock	Cemetery; grave	Cemetery; grave	Monument; water well; spring	Miner shaft; prospect; adit or cave	Control: horizontal station; vertical station; spot elevation	Contours: index; intermediate; supplementary; depression	Dartical surface: strip mine; lease land	Bathymetric contours: index; intermediate	Perennial lake and stream; intermittent lake and stream	Rapids, large and small; falls, large and small	Swamp; marsh	Submerged marsh; land subject to controlled inundation	Woodland; scattered trees	Scrub; mangrove	Dried; vineyard
-------------------------------	---------------------------------	---	------------------------	--------------------------------------	--------------------------------------	--------------------	---------------------------------	---	--	-----------	-------------------------	-------	----------------	------------------------------------	----------------------------------	---	--	--	---	---------------------	--	--------------------	-----------------	-----------------	------------------------------	-------------------------------------	---	--	--	---	---	---	--------------	--	---------------------------	-----------------	-----------------

A pamphlet describing topographic maps is available on request

NORTH ADAMS, MASS.—VT.

42073-F1-TM-025

1988



TOTAL RECOVERED PAPER