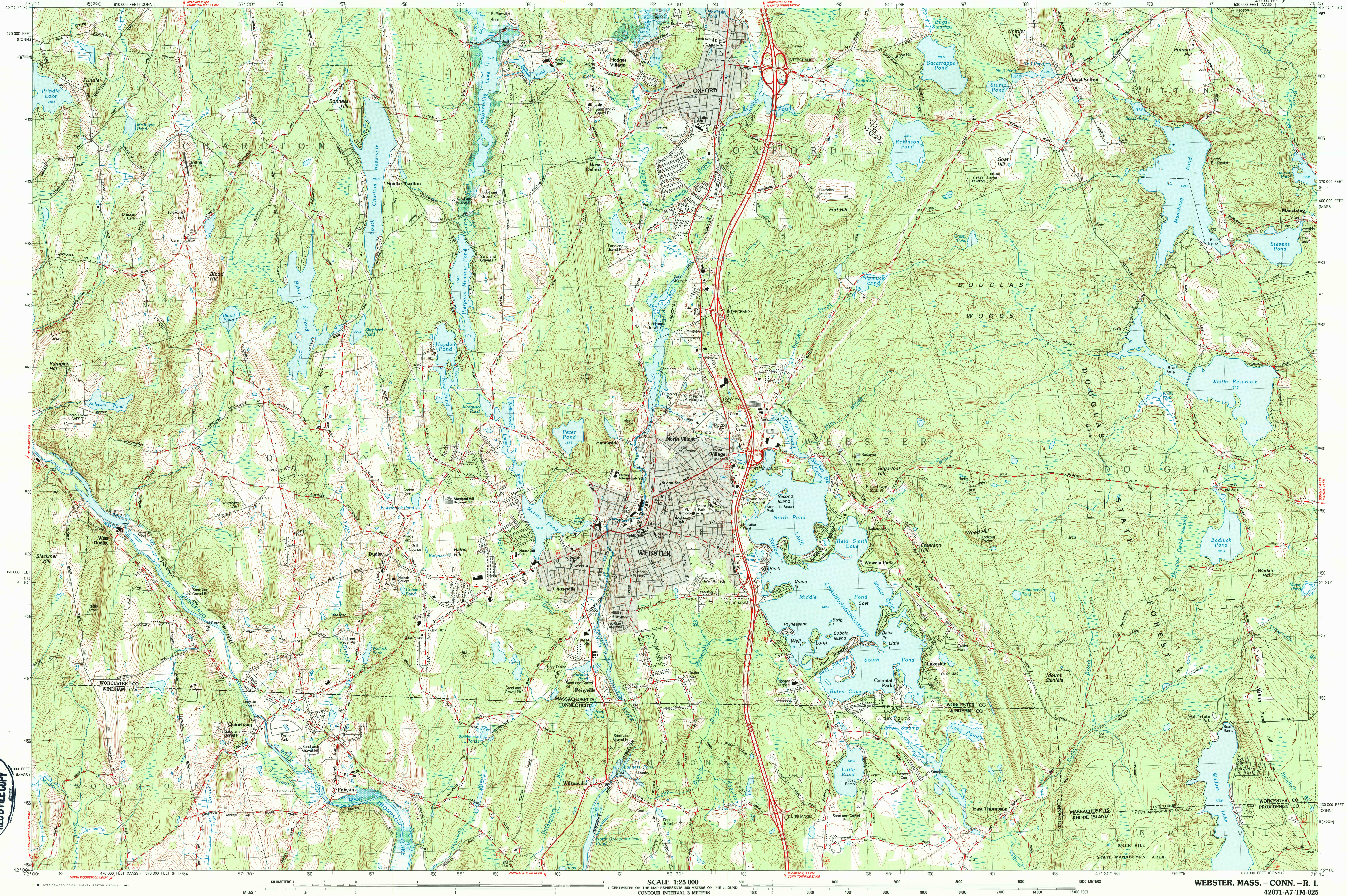


WEBSTER, MASSACHUSETTS - CONNECTICUT - RHODE ISLAND

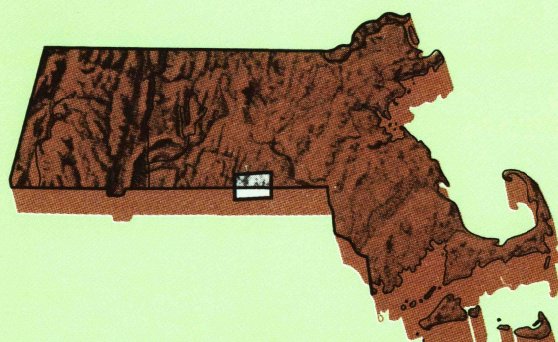
7.5 X 15 MINUTE SERIES (TOPOGRAPHIC)



Webster

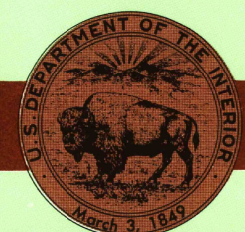
MASS. - CONN. - R. I.

1:25 000-scale metric
topographic map



7.5 X 15 MINUTE QUADRANGLE
SHOWING

- Contours and elevations
in meters
- Highways, roads and other
manmade structures
- Water features
- Woodland areas
- Geographic names



GEOLOGICAL SURVEY

1982

Produced by the United States Geological Survey
in cooperation with Massachusetts Department
of Public Works

Control by USGS, NOS/NOAA, and Massachusetts Geodetic Survey

Compiled by photogrammetric methods from aerial photographs
taken 1980. Field checked 1981. Map edited 1982
This area also covered by 7.5-minute, 1:24,000-scale
maps: Oxford and Webster dated 1969

Projection and 1000-meter grid, zone 19: Universal
Transverse Mercator
10,000-foot grid ticks based on Massachusetts coordinate
system, mainland zone, Connecticut coordinate system, and
Rhode Island coordinate system. 1927 North American Datum
To place on the predicted North American Datum 1983 move
the projection lines 6 meters south and 40 meters west
as shown by dashed corner ticks

There may be private inholdings within the boundaries of
the National or State reservations shown on this map

CONTOUR INTERVAL 3 METERS
NATIONAL GEODETIC VERTICAL DATUM OF 1929

CONTROL ELEVATIONS SHOWN TO THE NEAREST 0.1 METER
OTHER ELEVATIONS SHOWN TO THE NEAREST 0.5 METER

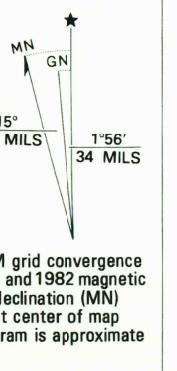
THIS MAP COMPLIES WITH NATIONAL MAP ACCURACY STANDARDS

CONVERSION TABLE

Meters	Feet
1	3.2808
2	6.5617
3	9.8425
4	13.1234
5	16.4042
6	19.6850
7	22.9659
8	26.2467
9	29.5275
10	32.8084

To convert meters to feet
multiply by 3.2808
To convert feet to meters
multiply by 0.3048

DECLINATION DIAGRAM



UTM grid convergence
(GN) and 1983 magnetic
(M) at center of map
Diagram is approximate

ADJOINING MAPS

1	2	3
4	a	5
6	a	7
8	b	8

1 Warren
2 Worcester South
3 Milford
4 Southbridge
5 Uxbridge
6 Eastford (7.5)
7 Putnam (7.5)
8 Thompson (7.5)
9 Cheshire (7.5)

FOR SALE BY U. S. GEOLOGICAL SURVEY
RESTON, VIRGINIA 22092

Topographic Map Symbols

Primary highway, hard surface
Secondary highway, hard surface
Light-duty road, hard or improved surface
Unimproved road, trail
Route marker: Interstate; U. S.; State
Railroad: standard gauge; narrow gauge
Bridge: drawbridge
Footbridge; overpass; underpass
Built-up area: only selected landmark buildings shown
House; barn; church; school; large structure
Boundary:
National, with monument
State
County, parish
Civil township, precinct, district
Incorporated city, village, town
National or State reservation; small park
Land grant with monument; found section corner
U. S. public lands survey: range, township, section
Range, township, section line: location approximate
Fence or field line
Power transmission line, located tower
Dam; dam with lock
Cemetery; grave
Campground; picnic area; U. S. location monument
Windmill; water well; spring
Mine shaft; prospect; adit or cave
Control: national station; vertical control; spot elevation
Contours: index; intermediate; supplementary; depression
Distorted surface: strip mine, lava, sand
Bathymetric contours: index; intermediate
Residual low and stream; intermittent lake and stream
Rapids, large and small; falls, large and small
Submerged marsh; marsh, swamp
Land subject to controlled inundation; woodland
Sandy, mangrove
Orchard; vineyard

A pamphlet describing topographic maps is available on request

RETURN TO:

USGS NHD HISTORICAL MAP ARCHIVES