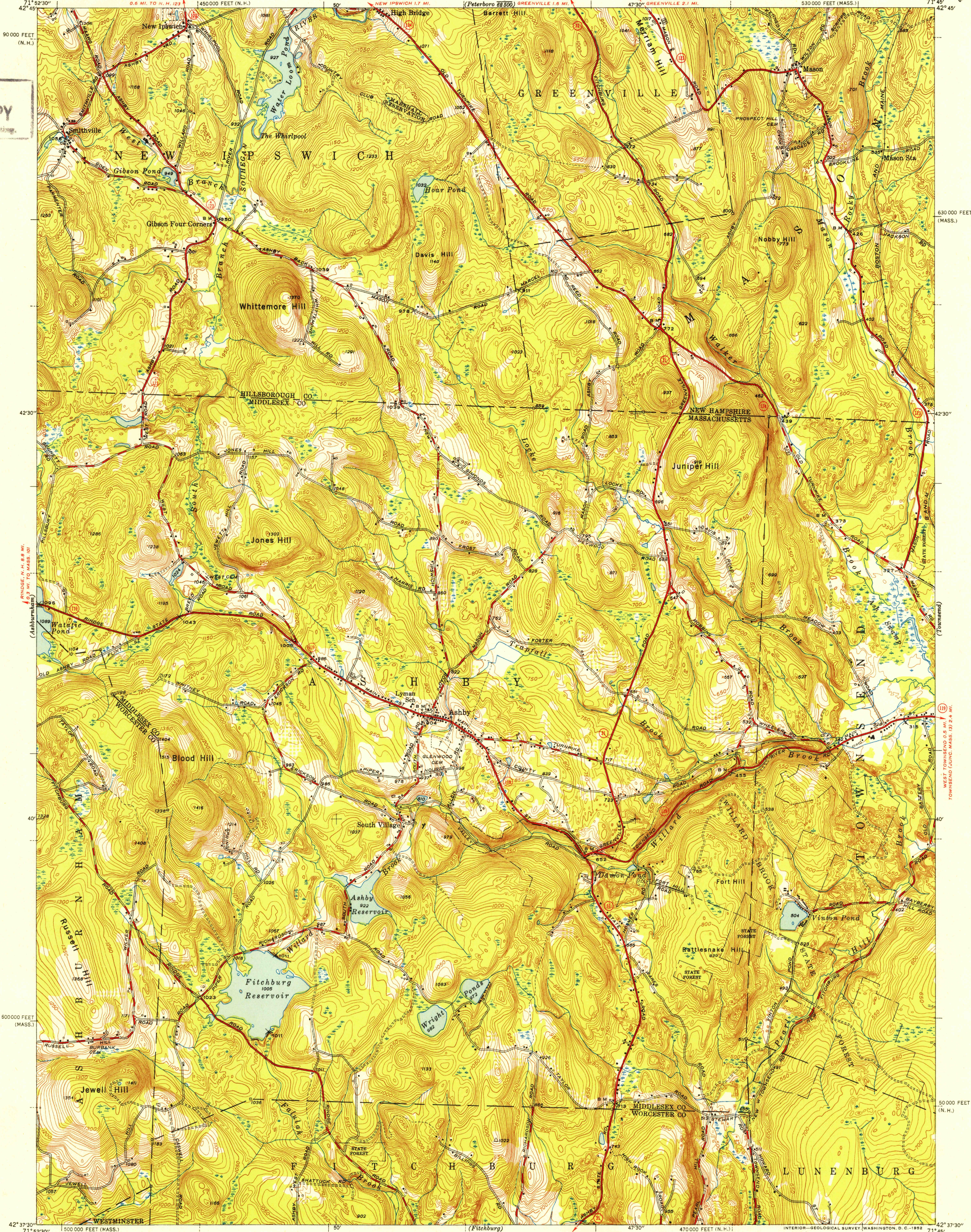


UNITED STATES  
DEPARTMENT OF THE INTERIOR  
GEOLOGICAL SURVEY

STATE OF MASSACHUSETTS  
DEPARTMENT OF PUBLIC WORKS  
WILLIAM F. CALLAHAN, COMMISSIONER

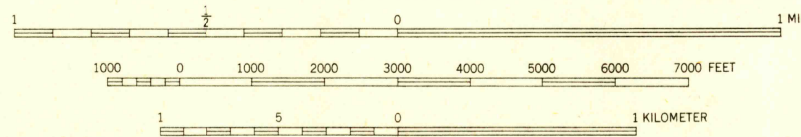
MASSACHUSETTS-NEW HAMPSHIRE  
ASHBY QUADRANGLE  
7 1/2-MINUTE SERIES

U. S. G. S.  
FILE COPY  
Inspection and Editing



Mapped, edited, and published by the Geological Survey  
Control by USGS, USC&GS, and Mass. Geodetic Survey  
Culture and drainage in part compiled from aerial photographs  
Surveyed 1943 and 1944. Revised 1950  
Polyconic projection. 1927 North American datum  
10,000-foot grids based on Massachusetts (Mainland) and  
New Hampshire coordinate systems

TRUE NORTH  
MAGNETIC NORTH  
APPROXIMATE MEAN  
DECLINATION, 1950



USGS  
Historical File  
Topographic Division

ROAD CLASSIFICATION  
HARD-SURFACE ALL WEATHER ROADS  
Heavy-duty ... 4 LANE LANE  
Medium-duty ... 4 LANE LANE  
U. S. Route  
State Route  
DRY WEATHER ROADS  
Improved dirt  
Unimproved dirt

ASHBY, MASS.-N. H.  
N4237.5-W7145.7.5  
1950

U. S. G. S.  
FILE COPY  
Inspection and Editing

CONTOUR INTERVAL 10 FEET  
DATUM IS MEAN SEA LEVEL  
FOR SALE BY U. S. GEOLOGICAL SURVEY, WASHINGTON 25, D. C.  
A FOLDER DESCRIBING TOPOGRAPHIC MAPS AND SYMBOLS IS AVAILABLE ON REQUEST