

UNITED STATES
DEPARTMENT OF THE INTERIOR
GEOLOGICAL SURVEY

WAR DEPARTMENT
CORPS OF ENGINEERS, U.S. ARMY
(Worcester South)

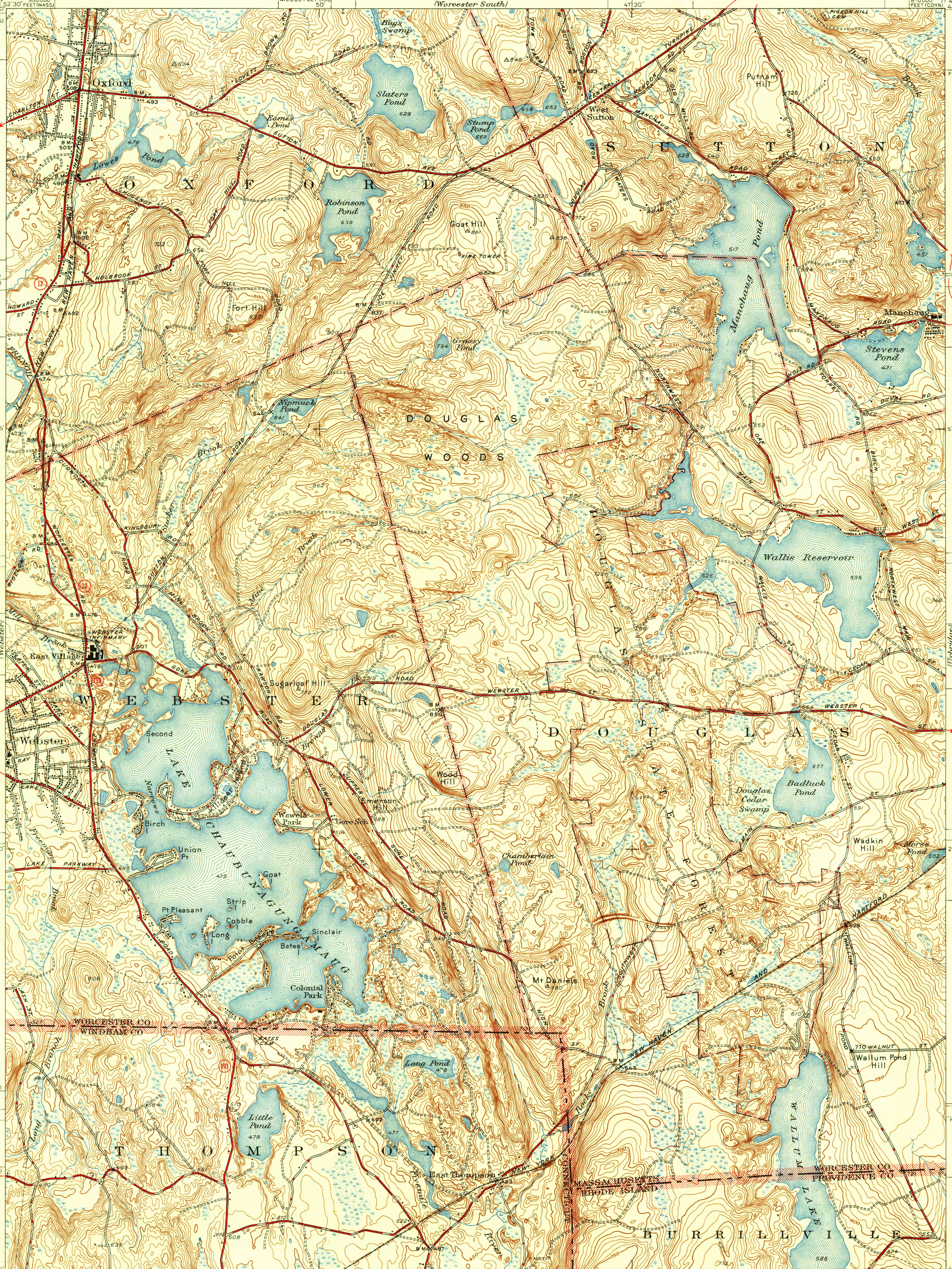
MASSACHUSETTS-CONNECTICUT-RHODE ISLAND
OXFORD QUADRANGLE
7 1/2-MINUTE SERIES

NORTH WOODSTOCK (JUNC. STATE NO. 83) 7.6 MI.
PUTNAM 11.2 MI.
NORTH GROSVENDALE 5.3 MI.
PENNYVILLE (STATE LINE) 2.2 MI.

DUDLEY 5.8 MI.
WEST OXFORD 1.2 MI.

WILSONVILLE (JUNC. STATE NO. 12) 0.8 MI.

WATERVILLE 4.5 MI.
WORCESTER (CIVIC CENTER) 20.4 MI.
NORTH USBRIDGE (JUNC. STATE NO. 122) 6.4 MI.



Map by the Geological Survey
1942-1943

THOMPSON 3.3 MI.
PUTNAM 7.7 MI.

JUNC. STATE NO. 193 2.3 MI.
THOMPSON 3.9 MI.

Scale 31880

Polyconic projection, 1927 North American datum
5000 yard grid based on U.S. zone system A
10000 foot grids based on Massachusetts
(Mainland), Connecticut and Rhode Island
rectangular coordinate systems

ROAD CLASSIFICATION
1946
Dependable hard-surface
heavy-duty road
Secondary hard-surface
all-weather road
More than two lanes indicated along road with tick at point of change

Dry weather roads
Loose-surface graded
Unsurfaced, graded
Dirt road

U.S. Route 15
State Route 26

Scale 31880
1 Mile
500 1000 1500 2000 2500 Yards
1000 2000 3000 4000 5000 6000 7000 Feet
1 5 10 Kilometers

Contour interval 10 feet
Datum is mean sea level

HISTORICAL FILES
(DO NOT REMOVE)

OXFORD, MASS.-CONN.-R.I.
Edition of 1946
N4200-W7145/75